



**OVER 60?**

Secure this property  
for up to **59% less!**

**Guide Price**

**£325,000**

**Freehold**

3x  1x  1x 

**Springett Way,  
Coxheath, Maidstone,  
Kent, ME17**

**Wards**  
Helping you move forwards





## Main features

- **Bright and airy interiors throughout**
- **Large front and rear gardens**
- **Garage and ample off road parking**
- **Situated in the popular village of Coxheath, just a short walk to local shops and Coxheath Primary School**
- **Potential to extend, subject to planning and consents**

## Accommodation

### GROUND FLOOR

Entrance Porch  
Entrance Hall  
Lounge/Diner: 24'0" x 11'0" (7.32m x 3.36m)  
Kitchen: 11'0" x 8'0" (3.36m x 2.44m)

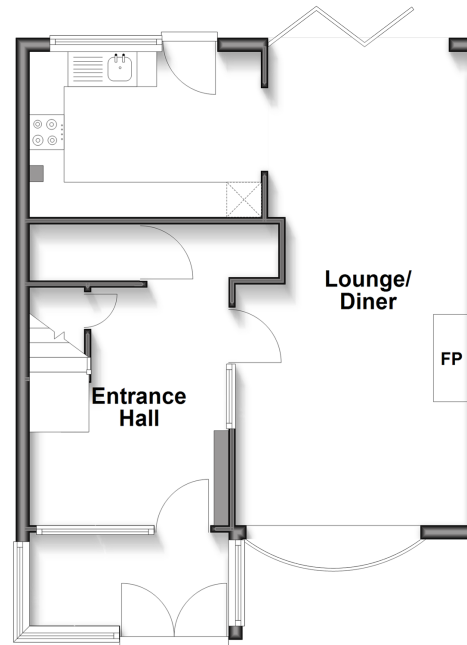
### FIRST FLOOR

Landing  
Bedroom 1: 10'1" x 9'1" (3.08m x 2.77m)  
Bedroom 2: 11'0" x 8'1" (3.36m x 2.47m)  
Bedroom 3: 9'0" x 7'1" (2.75m x 2.16m)  
Bathroom: 9'1" x 8'0" (2.77m x 2.44m)

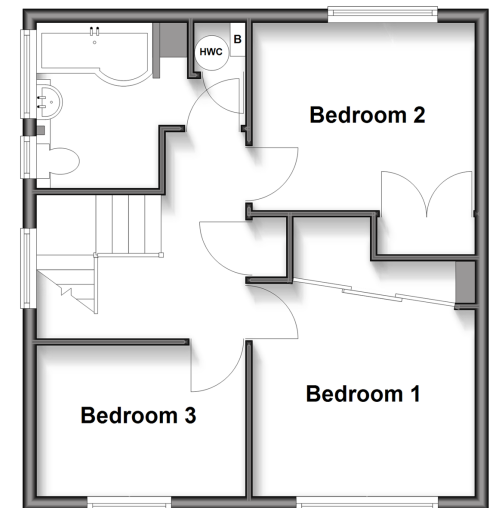
### OUTSIDE

Garage and Driveway  
Front and Rear Gardens

**Ground Floor**  
Approx. 47.6 sq. metres (512.6 sq. feet)



**First Floor**  
Approx. 43.1 sq. metres (464.0 sq. feet)



**Call Loose - 01622 744067 ■ [wardsof Kent.co.uk](http://wardsof Kent.co.uk)**

■ Legal advice should be taken to verify fixtures/fittings, planning, alterations and/or lease details  
■ Through a Homewise Home For Life Plan people aged 60+ can secure this property for up to 50% less, by purchasing a Lifetime Lease.

■ Appliances & services are untested, dimensions are approximate and floor plans are not to scale



13021170/20251025/LM/AS