



33 Aerodrome Lane, Witney



### 33 Aerodrome Lane

Brought to market with no onward chain is this well-presented four-bedroom detached home located on the popular Windrush development.

Council Tax band: E

Tenure: Freehold

EPC Energy Efficiency Rating: B

EPC Environmental Impact Rating: B

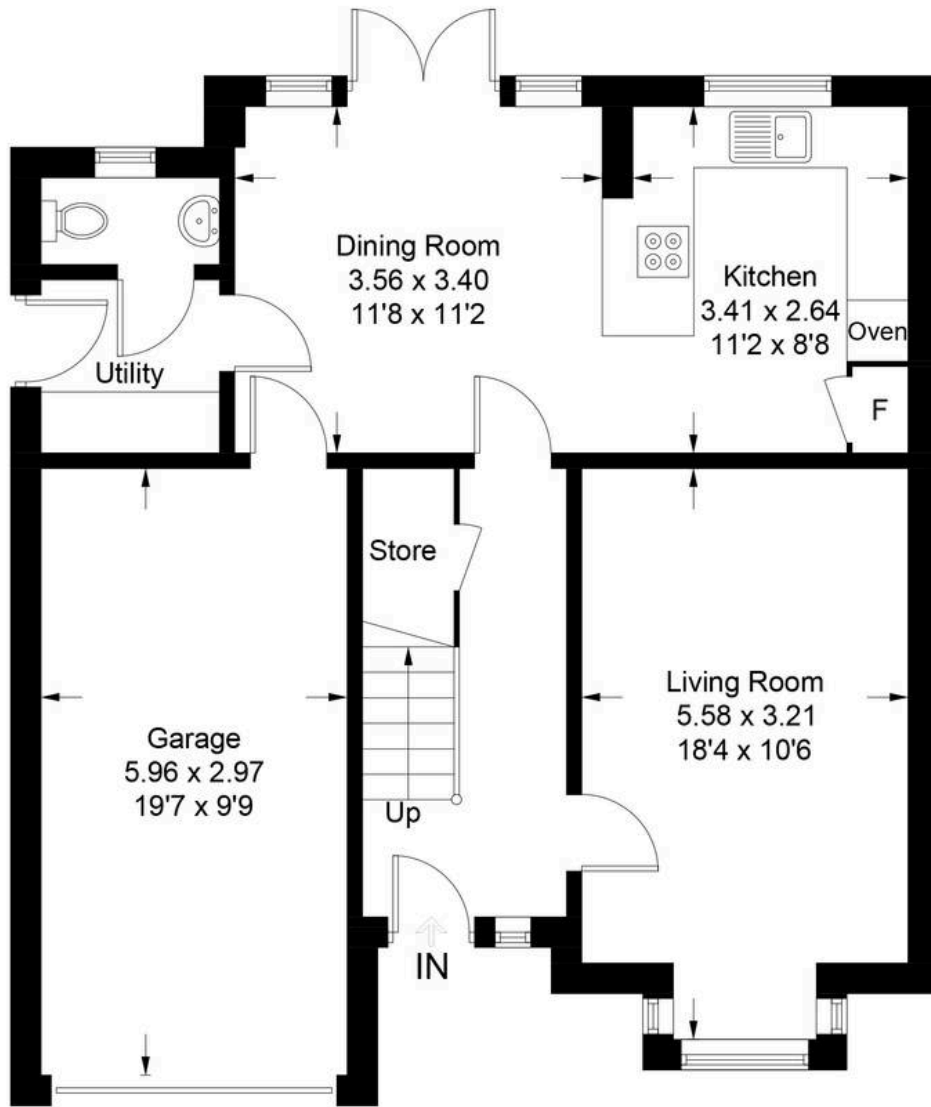
- Brought to market with no onward chain.
- A well-presented four-bedroom detached home located on the popular Windrush development.
- Open plan kitchen/dining room with integrated appliances and french doors leading out to the rear garden.
- Garage and off-street parking.
- Sitting room with bay window.
- Four well-proportioned bedrooms, two with ensuite shower rooms.



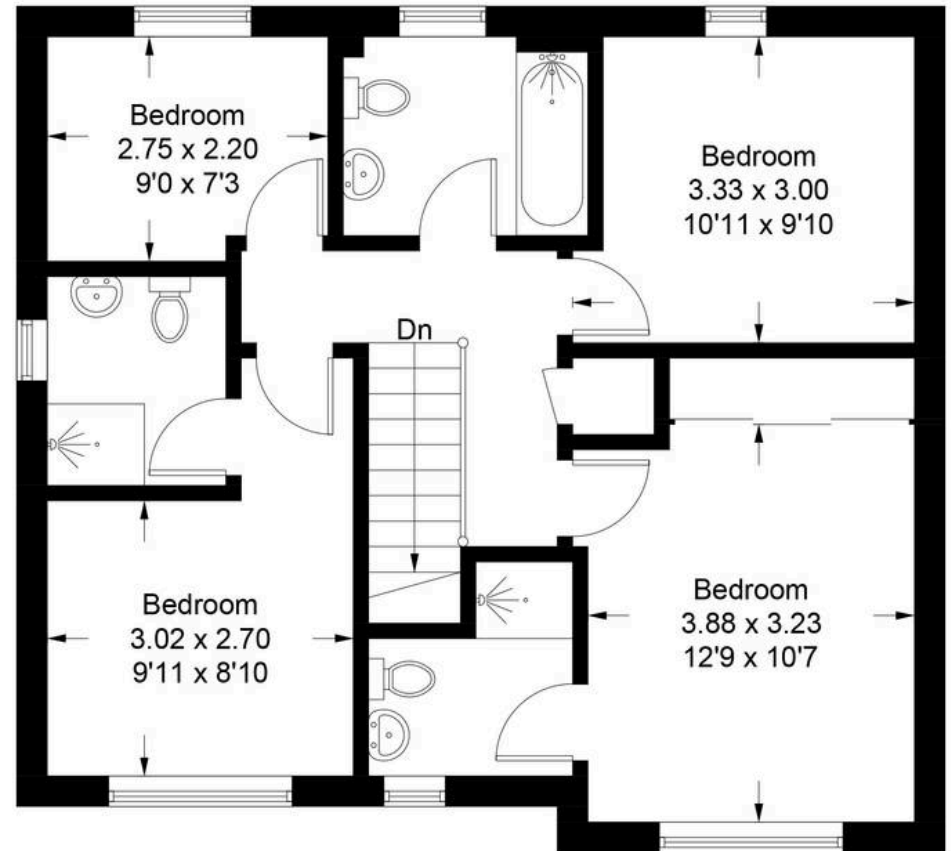


# Aerodrome Lane - Witney

Approximate Gross Internal Area = 136.9 sq m / 1473 sq ft  
(Including Garage)



**Ground Floor**



**First Floor**

Illustration for identification purposes only, measurements are approximate,  
not to scale. Fourlabs.co © (ID1310701)



## Simpsons Witney Branch

4 Langdale Court Witney, Oxfordshire - OX28 6AD

01993 835030 • [witney@simpsonsproperty.com](mailto:witney@simpsonsproperty.com) • [www.simpsonsproperty.com/](http://www.simpsonsproperty.com/)