



## Catherine Grove, SE10

£535,000

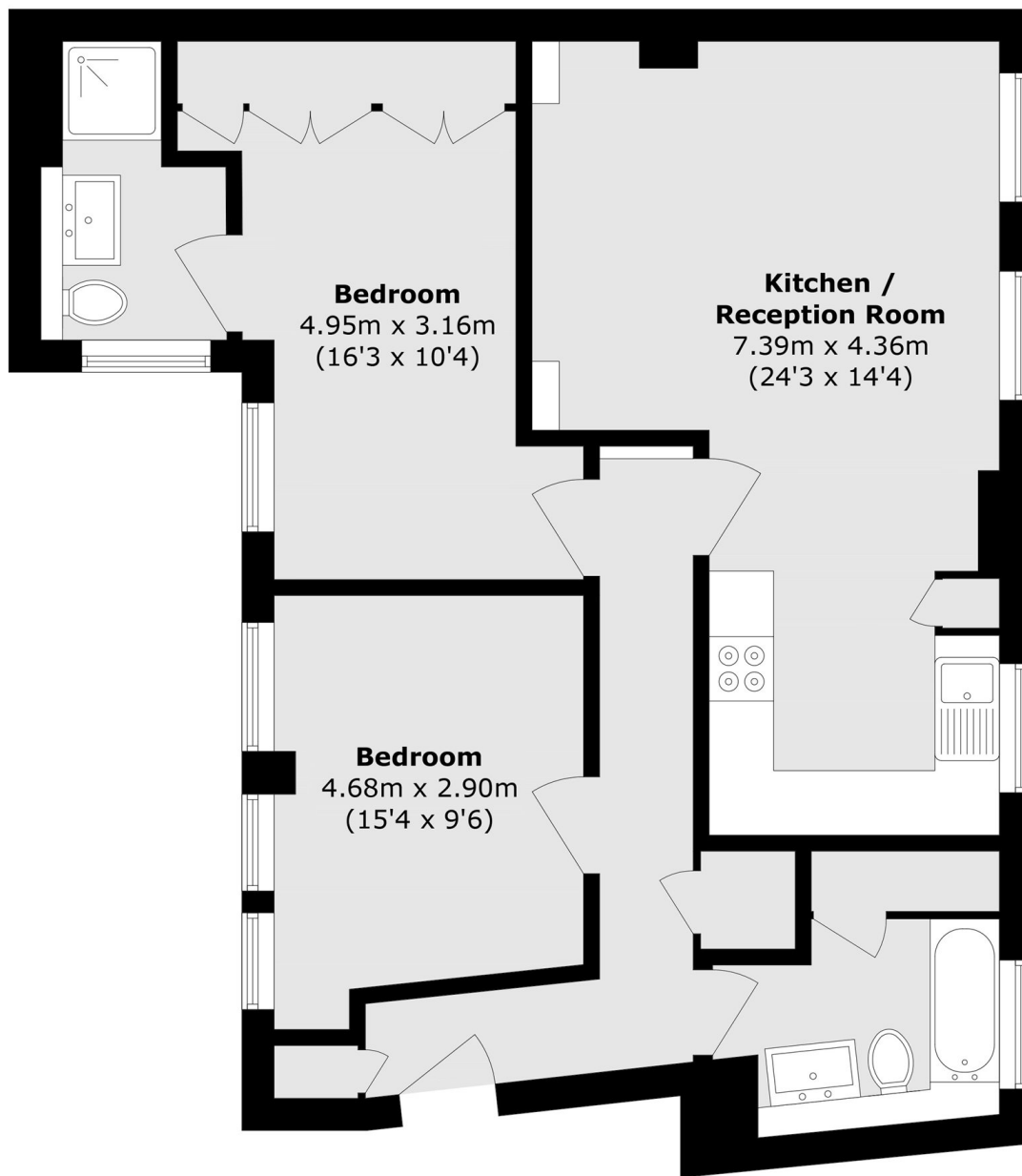
A beautifully presented two bedroom two bathroom first floor period conversion flat in this gated development famously know as 'the tool works' The property has been finished to a phenomenal standard throughout and would make an ideal first purchase. A viewing is highly recommended.

Conveniently located on the popular Ashburnham Triangle conservation area close to all transport links and amenities. The enviable location of this property makes commuting easy with Greenwich station and the DLR close by providing links to the City and Canary Wharf. Greenwich village is also within easy reach with an array of shops, restaurants and bars.

### Features

- Period Conversion
- Gated Development
- Sought After Location
- Immaculate Throughout
- Two Bedrooms
- Communal Outside Space

Catherine Grove,  
London, SE10



Total area (approx.): 72.6 sq. m (781.4 sq. ft)