



Long Road, Mangotsfield, BS16 9HG
03334041188 option 3

Asking Price £325,000
guy.rolfe@moving-you.co.uk

Freehold
www.moving-you.co.uk









Long Road, Mangotsfield, Bristol, BS16 9HG

This is a beautiful three-bedroom terraced family home, set back from the road with a small green to front in a popular road within Mangotsfield. Offered in good condition and well-suited to first-time buyers and families with the benefit of three double bedrooms.

Inside this lovely property there are two reception rooms, giving flexible space for both relaxing and modern living. The rear living room benefits from an inset wood-burning stove, while the other (which has flexible uses such as dining room, home office or even a fourth downstairs bedroom) enjoys a bay window, bringing extra light and character to the room. The kitchen benefits from good natural light, creating a pleasant space for everyday cooking which stretches around to the rear conservatory which is an ideal family area perfect for home working, hobbies or study. To the first floor there are three great double bedrooms and a family bathroom suite which features a shower cubicle, panelled bath, vanity sink and W.C.

Outside the home, is the private and tranquil rear garden, allowing you to relax on a sunny summers evening within a peaceful setting. Completing the space is the wooden workshop/gym which is a handy work space/gym to the rear.

Mangotsfield offers a range of local amenities, including shops, cafés and everyday services in nearby Downend and Emersons Green. There are nearby schools serving different age groups, making the location practical for families. Green spaces and local walking and cycling routes are close at hand, providing opportunities to enjoy the outdoors.

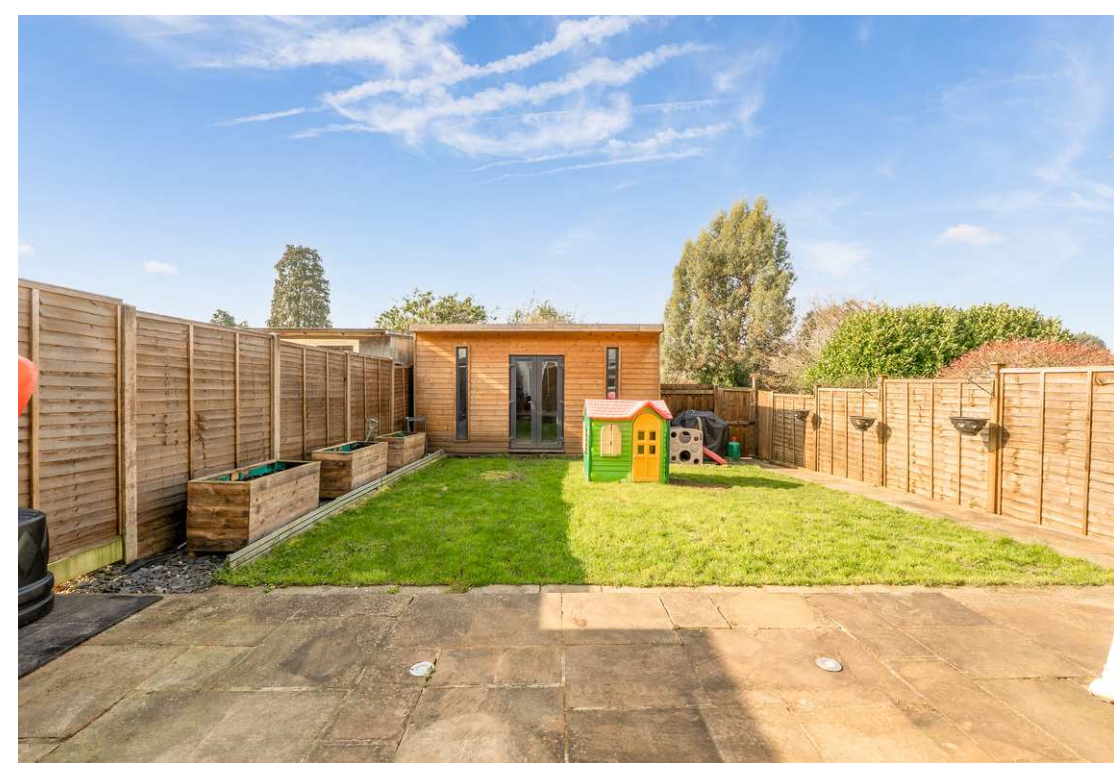
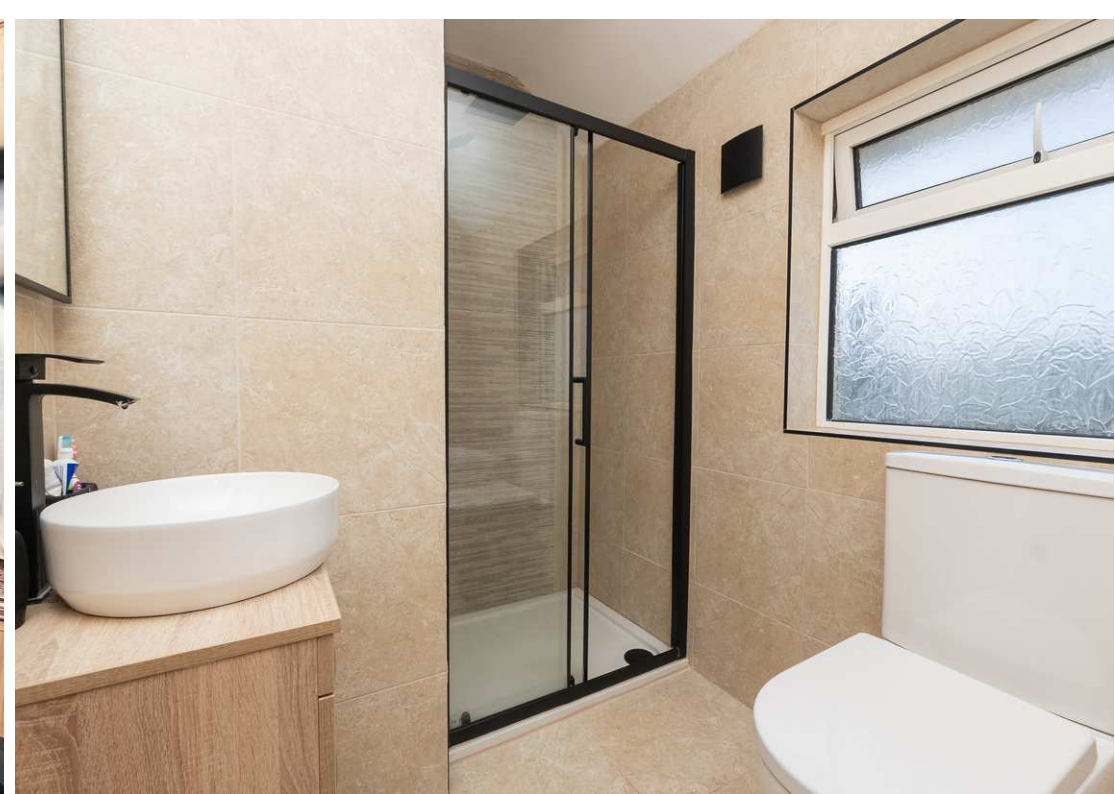
Overall, this three-bedroom terraced house combines practical accommodation, a garden workshop and convenient local facilities in a well-connected Mangotsfield location.

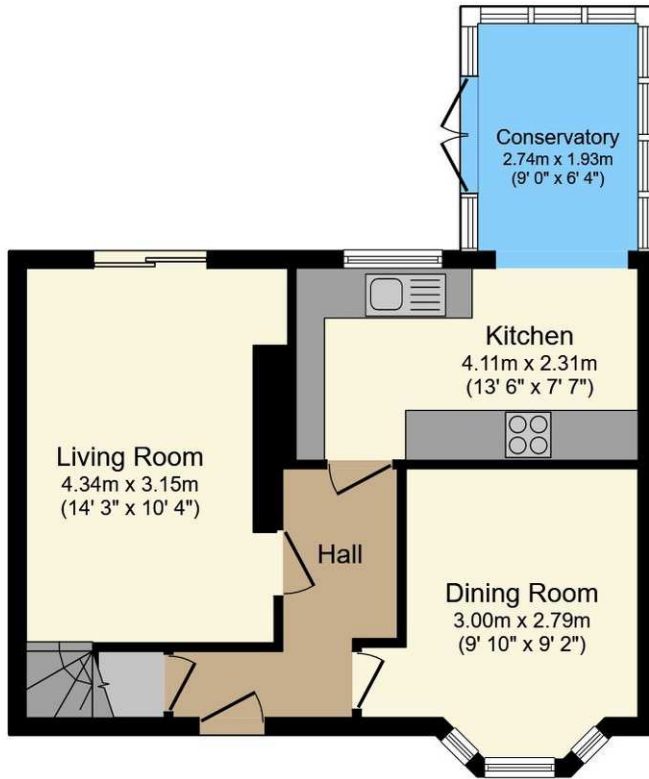
Council Tax Band B

The property includes a flying freehold over the pedestrian walkway.

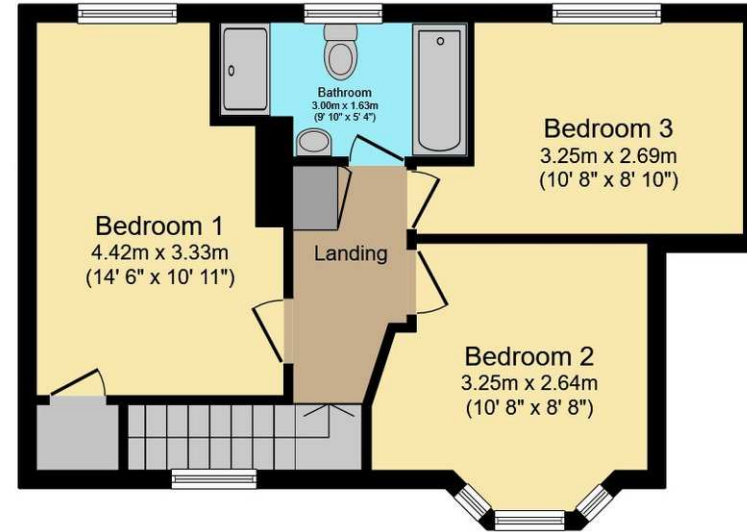








Ground Floor



First Floor

This floor plan is for illustrative purposes only. It is not drawn to scale. Any measurements, floor areas (including any total floor area), openings and orientations are approximate. No details are guaranteed, they cannot be relied upon for any purpose and do not form any part of any agreement. No liability is taken for any error, omission or misstatement. A party must rely upon its own inspection(s). Powered by www.Propertybox.io



Guy Rolfe Moving You

03334041188 option 3

guy.rolfe@moving-you.co.uk

PROPERTY MISDESCRIPTIONS ACT 1991: The Agents has not tested any apparatus, equipment, fixtures and fittings, or services, so cannot verify that they are in working order or fit for the purpose. The buyer is advised to obtain verification from his or her Professional Buyer, References to the Tenure of the property are based on information supplied by the Vendor. The agents have not had sight of the title documents. The buyer is advised to obtain verification from their Solicitor. You are advised to check the availability of any property before travelling any distance to view.

www.moving-you.co.uk