



Bowling Green Garage Site Bowling Green Lane, Cirencester, Gloucestershire  
GL7 2DY  
Guide Price £140,000

Hollis Morgan – A Freehold BLOCK OF 19 GARAGES occupying a LARGE COURTYARD PLOT | Vacant for INVESTMENT plus DEVELOPMENT POTENTIAL stp.

- FREEHOLD
- GARAGE SITE
- 19 SINGLE GARAGES
- DEVELOPMENT POTENTIAL
- SUBJECT TO CONSENTS

#### THE PROPERTY

ADDRESS | Bowling Green Garage Site, Cirencester GL7 2DY

A Freehold collection of 19 single garages with up and over doors occupying a mainly rectangular site with an approximate area of circa 760 sq m including a relatively long access road.

This site contains two ranks totalling 22 garages plus concrete parking area.

Please note 3 of the 22 garages have been previously sold on separate long leaseholds – please refer to online legal pack for full details.

Interested parties should be aware of various rights of way over the site – please refer to online legal pack for full details.

Sold with vacant possession.

Tenure - Freehold

#### THE OPPORTUNITY

##### GARAGE INVESTMENT

The garages are sold with vacant possession but have scope to create a steady income.

Interested parties to make their own investigations.

#### DEVELOPMENT OPPORTUNITY

The overall site may offer scope for development subject to gaining the necessary consents.

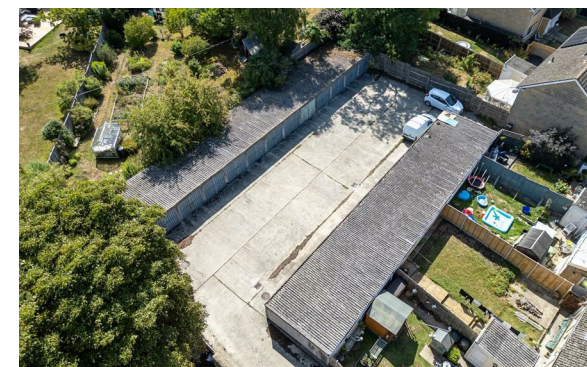
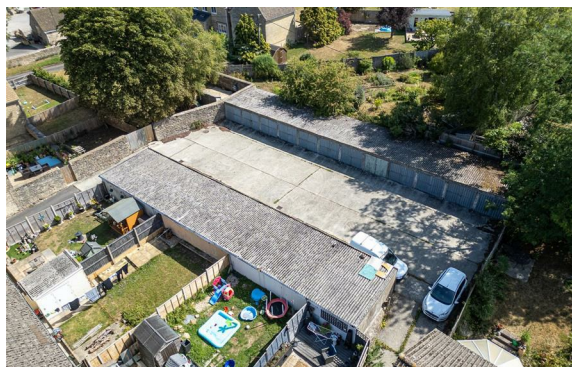
Please note rights of way.

#### LOCATION

Cirencester an historic Roman town which became an important centre for the wool trade in medieval times. Today it is a thriving market town. The property occupies a desirable situation. Shopping in Cirencester is highly regarded, off the main streets there are many interesting back lanes with specialist shops, particularly Black Jack Street. On the outskirts of the town are two supermarkets (Waitrose and Tesco) as well as a Hospital. A new Leisure Centre was opened in 2006 and one of the oldest open-air pools in the country is a short walk. A gate to the 2500 acre Cirencester Park, belonging to the Bathurst family and open during the day, is also a short walk off Cecily Hill. Many concerts are given in the Church and there are talented local choirs and amateur dramatic groups. Within about half an hour's drive are the towns of Cheltenham, Gloucester and Swindon. Bath, Oxford and Stratford are about an hour by car, with superb cultural and recreational facilities. Private and State schools in the area are excellent, such as Beaudesert, Deer Park, Kingshill, Prior Park, Rendcomb and Hatherop Castle. Kemble airfield has facilities for small aircraft and Aston Down is a gliding centre. Cirencester has had a golf course for over 100 years and others are at Minchinhampton, Burford and Naunton. Superb horse racing takes place at Cheltenham, as well as at meetings at Newbury and Bath. Sailing is available on the lakes between Cirencester and Swindon

#### PROPERTY DETAILS DISCLAIMER

Hollis Morgan endeavour to make our sales details clear, accurate and reliable in line with the Consumer Protection from Unfair Trading Regulations 2008 but they should not be relied on as statements or representations of fact, and they do not constitute any part of an offer or contract. All Hollis Morgan references to planning, tenants, boundaries, potential development, tenure etc is to be superseded by the information contained in the legal pack. It should not be assumed that this property has all the necessary Planning, Building Regulation, or other consents. Any services, appliances and heating system(s) listed have not been checked or tested. Please note that in some instances the photographs may have been taken using a wide-angle lens. The seller does not make any representation or give any warranty in relation to the property, and we have no authority to do so on behalf of the seller.





Energy Efficiency Rating		Environmental Impact (CO <sub>2</sub> ) Rating	
	Current	Potential	
Very energy efficient - lower running costs			Very environmentally friendly - lower CO <sub>2</sub> emissions
(92 plus) <b>A</b>			(92 plus) <b>A</b>
(81-91) <b>B</b>			(81-91) <b>B</b>
(69-80) <b>C</b>			(69-80) <b>C</b>
(55-68) <b>D</b>			(55-68) <b>D</b>
(39-54) <b>E</b>			(39-54) <b>E</b>
(21-38) <b>F</b>			(21-38) <b>F</b>
(1-20) <b>G</b>			(1-20) <b>G</b>
Not energy efficient - higher running costs			Not environmentally friendly - higher CO <sub>2</sub> emissions
<b>England &amp; Wales</b>	EU Directive 2002/91/EC		<b>England &amp; Wales</b>
			EU Directive 2002/91/EC

hollis  
morgan

---