



White Lodge Close, TW7

£1,495 Per calendar month

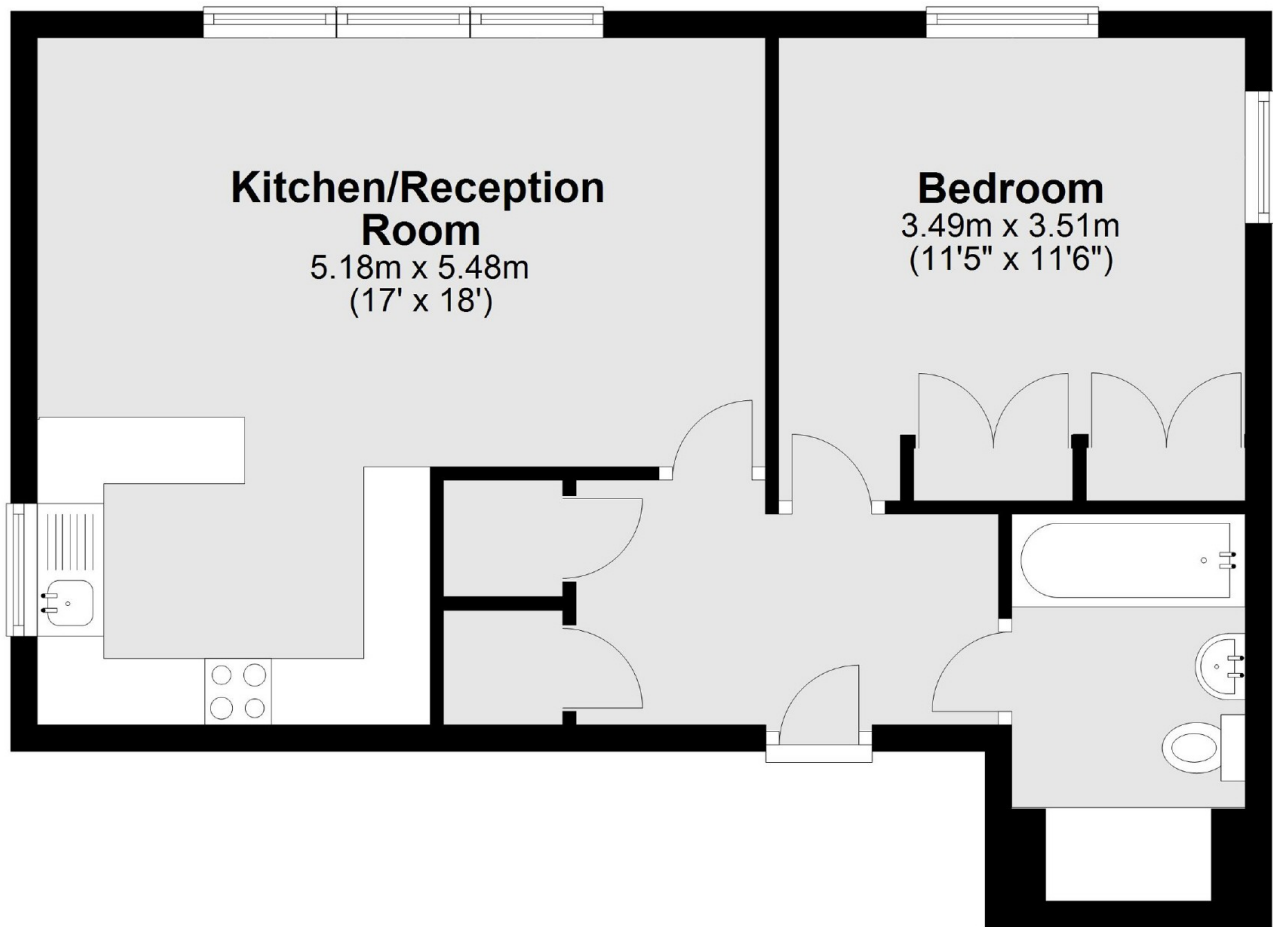
A well-presented one bedroom apartment in this popular modern development in Isleworth. Featuring a dual-aspect bedroom, open-plan living room with a modern kitchen and a Juliet balcony; this home is full of natural light. The property also benefits from a four-piece bathroom, secure video entry system and allocated parking space.

White Lodge Close is a sought-after development just 0.8 miles from Syon Lane Train Station. The River Thames is only 0.6 miles away, while the expansive green space of Syon Park is just 1.1 miles from the property.

Features

- Modern Development
- One Double Bedroom
- Open-Plan Living
- Juliet Balcony
- Allocated Parking
- Four-Piece Bathroom

White Lodge Close, Old Isleworth, TW7



Total area: approx. 49.4 sq. metres (532.2 sq. feet)