



Lodges & Caravans

FOR SALE



House no:10, Willerby New Hampshire Haggerston castle holiday park,

Postcode TD15 2DA
Price £47,500

- Spacious 40x16ft lodge
- Open-plan living area
- Access to swimming pools
- Explore Holy Island
- Award-winning holiday park
- Two cosy bedrooms
- Fully equipped kitchen
- Near Bamburgh Castle
- Ideal for families
- Viewing recommended

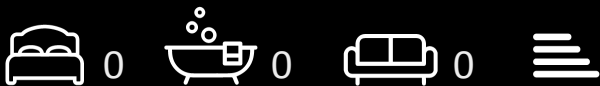
House no:10, Willerby New Hampshire Haggerston castle holiday park Real TD15 2PA

Nestled within the award-winning Haven Haggerston Castle Holiday Park in Northumberland, this charming 2010 Willerby New Hampshire lodge presents an exceptional opportunity for those seeking a delightful retreat. Spanning an impressive 640 square feet, this well-designed lodge boasts a spacious layout of 40x16ft, featuring two inviting bedrooms that provide a comfortable haven for relaxation.

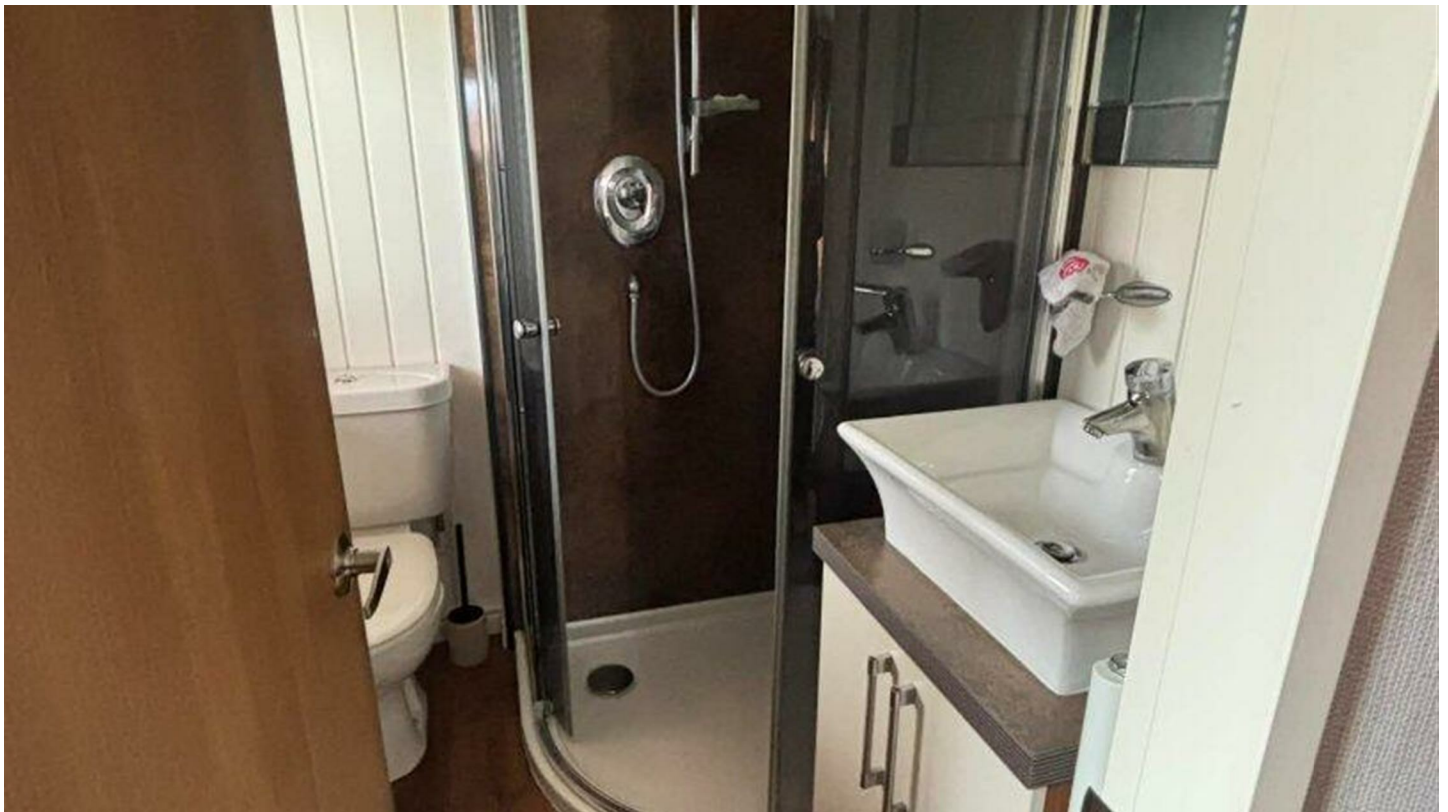
The open-plan living area is a highlight of the property, seamlessly combining a fully equipped kitchen, a dining space, and a cosy lounge. This inviting space is perfect for unwinding after a day of exploration along the stunning Northumberland coastline. The master bedroom is fitted with a double bed, while the second bedroom offers twin single beds, accommodating up to four guests with ease.

As a resident of Haggerston Castle, you will enjoy a wealth of on-site amenities, including swimming pools, entertainment venues, and a variety of dining options. The park is also a gateway to some of the region's most iconic attractions, such as Bamburgh Castle, Holy Island, the Farne Islands, and Berwick-upon-Tweed. This makes it an ideal destination for families, couples, and friends looking to create lasting memories.

Whether you are seeking a holiday home or a rental investment, this lodge offers a perfect blend of comfort and convenience in one of England's most picturesque settings. Embrace the opportunity to own a slice of this beautiful coastal paradise.



Council Tax Band: Exempt







Directions

Viewings

Viewings by arrangement only. Call 07500 874938 to make an appointment.

EPC Rating:

Energy Efficiency Rating		Current	Potential
<i>Very energy efficient - lower running costs</i>			
(92 plus) A			
(81-91) B			
(69-80) C			
(55-68) D			
(39-54) E			
(21-38) F			
(1-20) G			
<i>Not energy efficient - higher running costs</i>			
Scotland		EU Directive 2002/91/EC	