



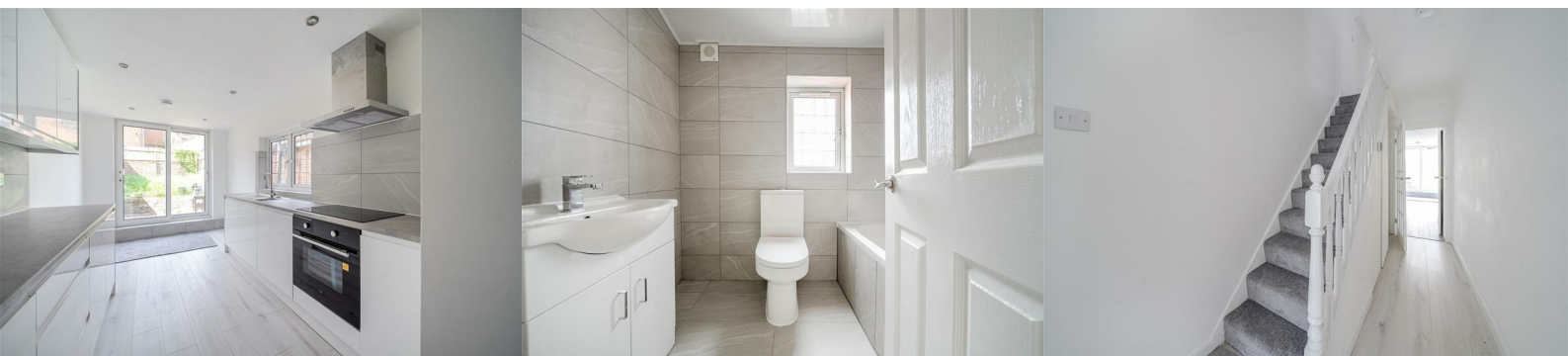
Stanley Street

Luton, LU1 5AN

£299,500



Update: 22.05.2026. Ready for viewings. A stylishly updated 3-bed home with two receptions, private garden and superb transport links, ready to move into with no onward chain.



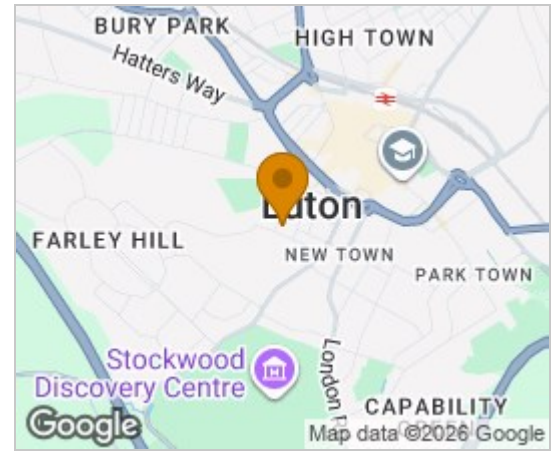
Stylish 3-bed end of terrace, two receptions, private garden – ideal first home or investment.

Situated on Stanley Street in Luton (LU1), this beautifully renovated three-bedroom end of terrace house is ready to welcome its new owners. The property offers two spacious reception rooms, a separate modern kitchen and a private garden, creating an inviting space for family life, entertaining or simply relaxing. With no onward chain, it's move-in ready and ideal for first-time buyers, growing families or those looking for a solid addition to their investment portfolio.

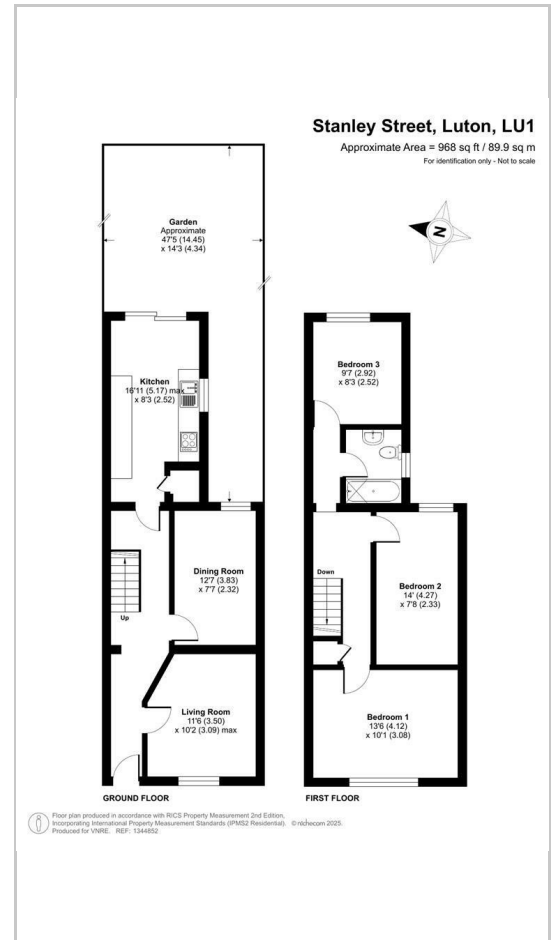
The location is equally appealing, with excellent transport links into London from Luton train station just a short distance away, as well as easy access to the M1 motorway and Luton Airport. Stanley Street also benefits from being close to the town centre, providing a wide range of shops, restaurants and local amenities. Nearby schools, green spaces and community facilities further enhance the area, making this property not only a smart purchase but also a great place to call home.

Contact our team today to arrange your viewing.

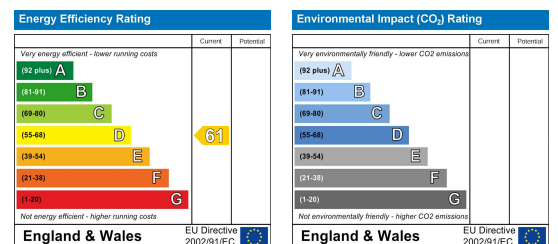
Area Map



Floor Plans



Energy Efficiency Graph



These particulars, whilst believed to be accurate are set out as a general outline only for guidance and do not constitute any part of an offer or contract. Intending purchasers should not rely on them as statements of representation of fact, but must satisfy themselves by inspection or otherwise as to their accuracy. No person in this firm's employment has the authority to make or give any representation or warranty in respect of the property.