



Leppoc Road, SW4
£950,000

Dexters



Leppoc Road, SW4

This flawless, two bedroom, two bathroom split level period conversion has been refurbished to an extremely high and tasteful standard throughout, has a private, landscaped garden and retains the potential to extend into the large loft (STPP).

The accommodation comprises a spacious front-facing reception room with a bay window, original fireplace, bespoke cabinetry and bookshelves, as well as ample space for dining. A separate kitchen features a range of attractive wall and base units with integrated appliances, while French doors open directly onto a terrace with steps leading down to the garden. The remainder of the first floor and half landing accommodates two double bedrooms and two bathrooms.

Features

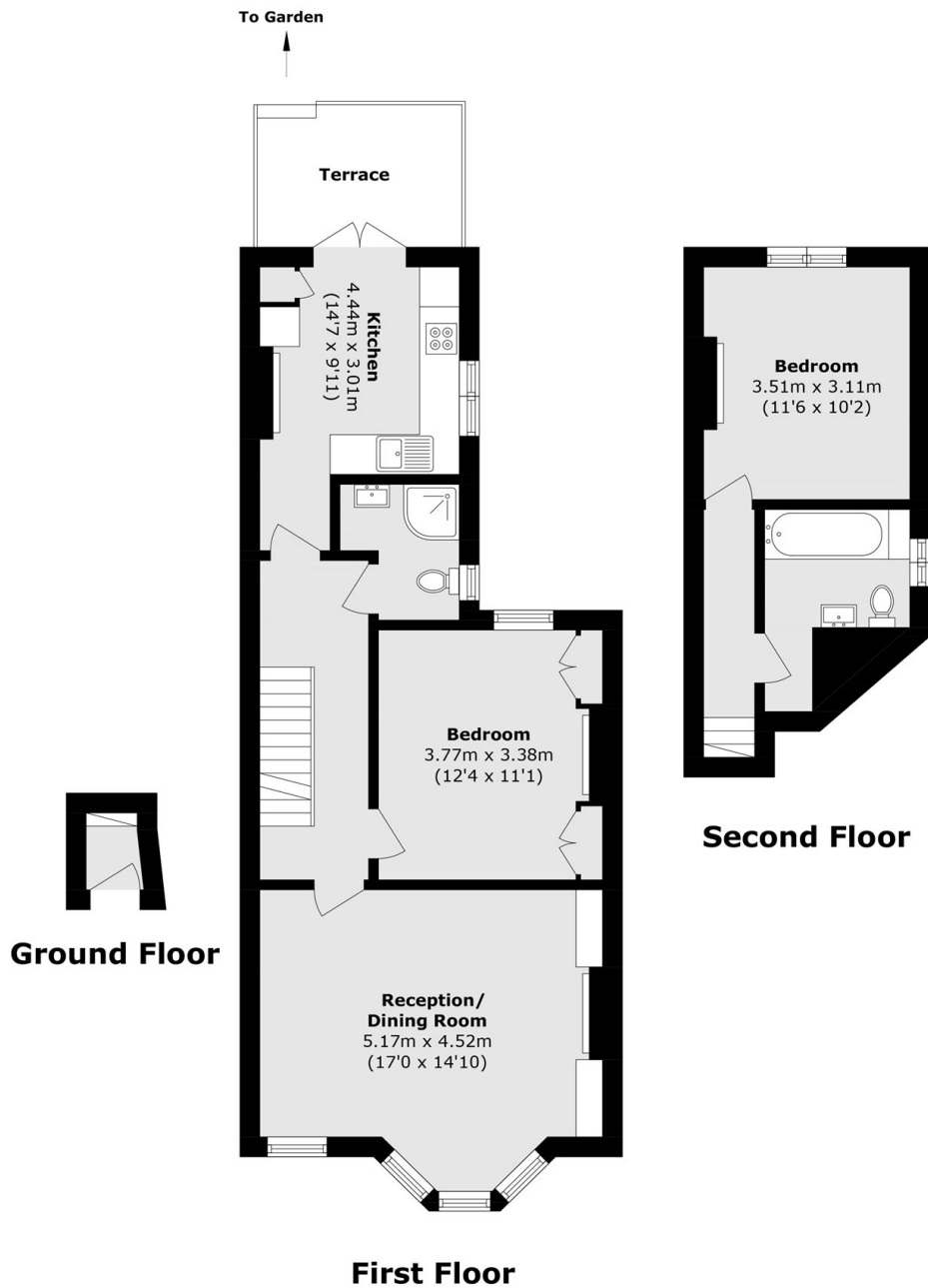
- Split Level Conversion
- Large Reception Room
- Two Bedrooms
- Two Bathrooms
- Landscaped Garden
- Share Of Freehold







Leppoc Road, LONDON, SW4



Total area (approx.): 78.8 sq. m (848.2 sq. ft)
Terrace Total (approx.): 6.6 sq. m (71.0 sq. ft)