



FISHER

FISHER

ESTATES

Clarendon Road, Little Canfield

£400,000

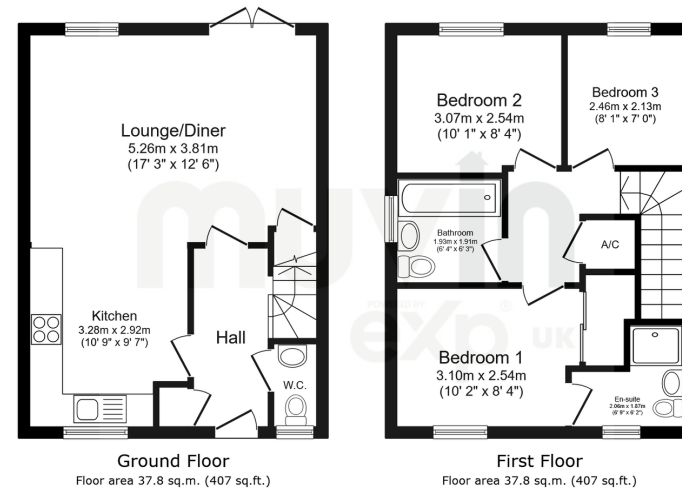
3 2 1

- 3 Bedrooms (Main with en-suite & wardrobes)
- Kitchen built for real life (and Sunday roasts)
- Allocated parking spot right outside the back gate
- Light, bright, airy vibe throughout
- EPC C & Council Tax Band D
- Lounge & Dining that flow straight into the garden
- Garage gym / Office / Studio - You decide
- Peaceful cul-de-sac steering
- Smart storage so it always feels tidy
- Close to schools, green walks and transport links



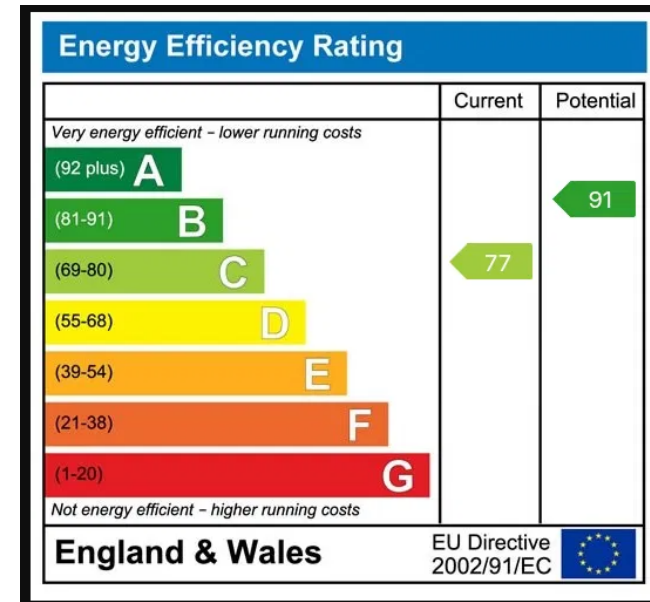
A modern three-bedroom home in a quiet cul-de-sac, offering open-flow living, a private main suite, versatile third bedroom, garden, parking and a converted garage ready for gym, studio or workspace use.





Total floor area: 75.6 sq.m. (813 sq.ft.)

This floor plan is for illustrative purposes only. It is not drawn to scale. Any measurements, floor areas (including any total floor area), openings and orientations are approximate. No details are guaranteed, they cannot be relied upon for any purpose and do not form any part of any agreement. No liability is taken for any error, omission or misstatement. A party must rely upon its own inspection(s). Powered by www.propertybox.io



COLCHESTER 01206 480008 | BRAINTREE 01376 343777 | TAKELEY 01279 808707 | BISHOP STORTFORD 01279 808708

ENQUIRES@FISHERESTATES.CO.UK | LETTINGS@FISHERESTATES.CO.UK

WWW.FISHERESTATES.CO.UK