

[www.jeffreygross.co.uk](http://www.jeffreygross.co.uk)

CARDIFF

VALE

CAERPHILLY

BRISTOL



*Ashley Down Road*

BISHOPSTON



Comments by Ms Olivia Melville-Brown



**Property Specialist**  
Ms Olivia Melville-Brown  
Branch manager

[o.melvillebrown@thepropertyoutlet.com](mailto:o.melvillebrown@thepropertyoutlet.com)

Comments by the Homeowner





# Ashley Down Road

*Bishopston, Bristol, BS7 9JN*

PCM

**£1,100 PCM**



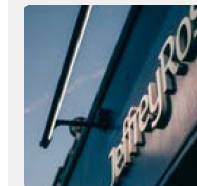
1 Bedroom(s)



1 Bathroom(s)



322.91 sq ft



Contact our  
***Property Outlet Branch***

0117 935 4565

\*AVAILABLE NOW \*

FURNISHED ONE BEDROOM GROUND FLOOR FLAT! The Property Outlet are keen to offer this FURNISHED ground floor flat which is situated close to Gloucester Road to the rental market. The accommodation comprises OPEN PLAN KITCHEN/LIVING ROOM, DOUBLE BEDROOM, MODERN SHOWER ROOM & WC and COURT YARD GARDEN WITH STORAGE. The property further benefits from GAS CENTRAL HEATING & DOUBLE GLAZING. WHITE GOODS include an ELECTRIC HOB/ELECTRIC OVEN, WASHING MACHINE, MICROWAVE, FRIDGE & a FREEZER. This lovely modern apartment would suit a COUPLE or a SINGLE PERSON. Situated in Ashley Down the property has great access to local amenities, shops and bus routes.

Holding deposit £253.84



CARDIFF

VALE

CAERPHILLY

BRISTOL

[www.jeffreygross.co.uk](http://www.jeffreygross.co.uk)





