



Hillfield Road, NW6

£1,099,950

A rare opportunity to purchase a luxurious three bedroom lateral apartment with a private garden, which has been recently refurbished to a very high standard. The property offers two bathrooms and it will be sold with no onward chain.

Hillfield Road is ideally located close to the shops, bars and restaurants of trendy West End Lane and Fortune Green Park at the end of the street. Convenient transport links include Jubilee line tube station, London Overground and National Thameslink.

Features

- Newly Refurbished
- Private Garden
- Two Bathrooms
- Walk In Wardrobe
- Underfloor Heating
- No Onward Chain



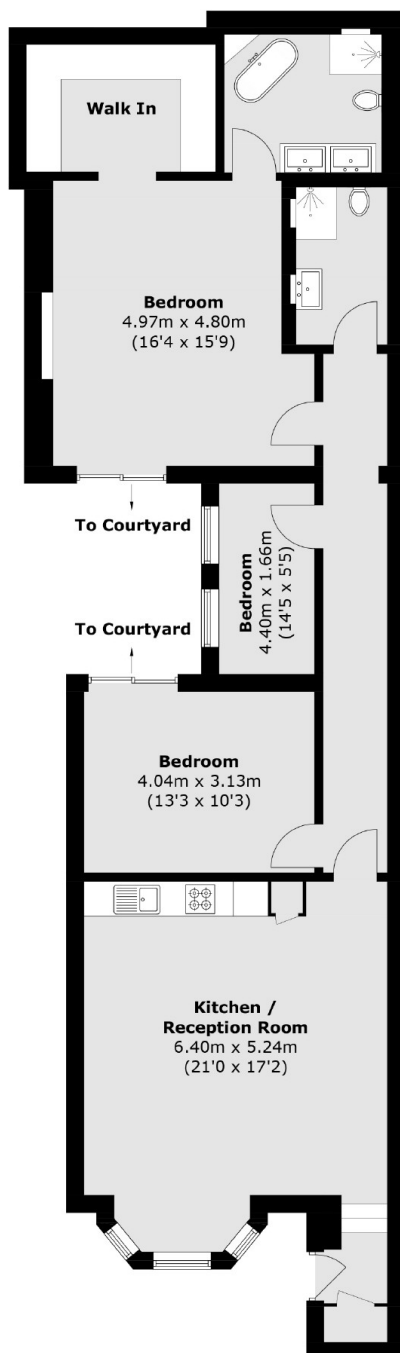
Hillfield Road, NW6

As you enter, you'll notice meticulous attention to detail and exceptional quality, with underfloor heating, engineered herringbone wooden flooring and double-glazed windows. The property offers a beautifully appointed open plan kitchen, dining and lounge areas with classic bay windows which flood the property with an abundance of natural light.

The property boasts two well-proportioned double bedrooms, both with access to a private light well. The main bedroom offers a large en suite and a walk-in wardrobe. An additional bedroom, family bathroom with state-of-the-art tiles, premium fixtures and a stunning private patio are at the front of the property.



Hillfield Road, London, NW6



Total area (approx.): 107.2 sq. m (1,153.9 sq. ft)

Dexters

West Hampstead Sales
349 West End Lane
London
NW6 1LT
Sales
020 7644 9300

Energy Rating: D. We aim to make our particulars both accurate and reliable. However they are not guaranteed; nor do they form part of an offer or contract. If you require clarification on any points then please contact us, especially if you're traveling some distance to view. Please note that appliances and heating systems have not been tested and therefore no warranties can be given as to their good working order.

 **RICS** | Regulated
Estate Agent
and Letting Agent

[dexters.co.uk](https://www.dexters.co.uk)