



Lindale Close, Northampton NN3 2AQ

welcome to

Lindale Close, Northampton

Located in the Spinney Hill area of town offering easy access to local shops and well regarded schools such as Parklands Primary and Northampton School for Girls.

Entrance Porch

Entered via double glazed door to the front aspect and door leading to hallway.

Entrance Hall

Entered via door to the front aspect, radiator, access to loft space and doors leading to all rooms.

Lounge

Double glazed window to the front aspect and radiator.

Kitchen

Fitted kitchen comprising wall and base units with worksurfaces over, stainless steel sink and drainer unit with mixer tap over, gas hob, plumbing for washing machine, wall mounted boiler, coving to ceiling, double glazed window to the rear aspect and double glazed door to the rear aspect leading to rear garden.

Bedroom One

Double glazed window to the front aspect, built in wardrobes and radiator.

Bedroom Two

Double glazed window to the rear aspect and radiator.

Bathroom

Suite comprising shower cubicle, vanity wash hand basin, low level WC and heated towel rail.



Externally

Front

Open frontage mainly laid with block paving to provide off road parking.

Rear Garden

Large rear garden mainly laid to lawn and fully enclosed with timber fencing.



view this property online williamhbrown.co.uk/Property/KIN109505



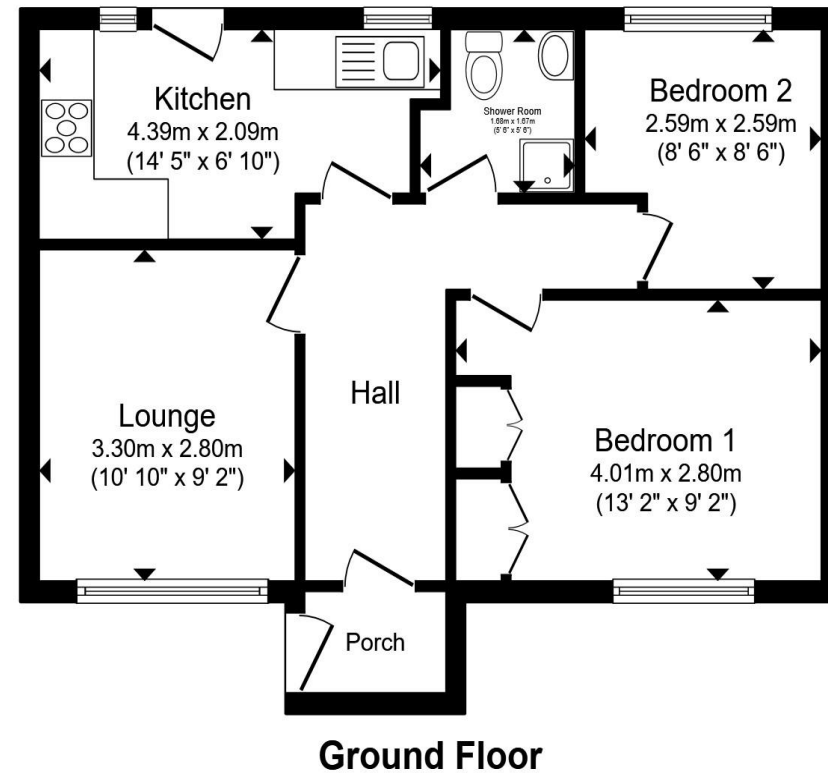
welcome to

Lindale Close, Northampton

- Detached Bungalow
- Generous Plot
- Off Road Parking
- Cul-de-Sac Location
- Planning for Extension

Tenure: Freehold EPC Rating: D
Council Tax Band: C

£265,000



Total floor area 48.6 m² (524 sq.ft.) approx

This floor plan is for illustrative purposes only. It is not drawn to scale. Any measurements, floor areas (including any total floor area), openings and orientation are approximate. No details are guaranteed, they cannot be relied upon for any purpose and they do not form part of any agreement. No liability is taken for any error, omission or misstatement. A party must rely upon its own inspection(s). Powered by www.propertybox.io



view this property online williamhbrown.co.uk/Property/KIN109505



Property Ref:
KIN109505 - 0003

1. MONEY LAUNDERING REGULATIONS Intending purchasers will be asked to produce identification documentation at a later stage and we would ask for your co-operation in order that there is no delay in agreeing the sale. 2. These particulars do not constitute part or all of an offer or contract. 3. The measurements indicated are supplied for guidance only and as such must be considered incorrect. Potential buyers are advised to recheck measurements before committing to any expense. 4. We have not tested any apparatus, equipment, fixtures or services and it is in the buyers interest to check the working condition of any appliances. 5. Where an EPC, or a Home Report (Scotland only) is held for this property, it is available for inspection at the branch by appointment. If you require a printed version of a Home Report, you will need to pay a reasonable production charge reflecting printing and other costs. 6. We are not able to offer an opinion either written or verbal on the content of these reports and this must be obtained from your legal representative. 7. Whilst we take care in preparing these reports, a buyer should ensure that his/her legal representative confirms as soon as possible all matters relating to title including the extent and boundaries of the property and other important matters before exchange of contracts.

William H Brown is a trading name of Sequence (UK) Limited which is registered in England and Wales under company number 4268443, Registered Office is Cumbria House, 16-20 Hockliffe Street, Leighton Buzzard, Bedfordshire, LU7 1GN. VAT Registration Number is 500 2481 05.

 **william h brown**



01604 719461



NorthamptonNorth@williamhbrown.co.uk



74 Kingsley Park Terrace, Kingsley,
NORTHAMPTON, Northamptonshire, NN2 7HH



williamhbrown.co.uk