

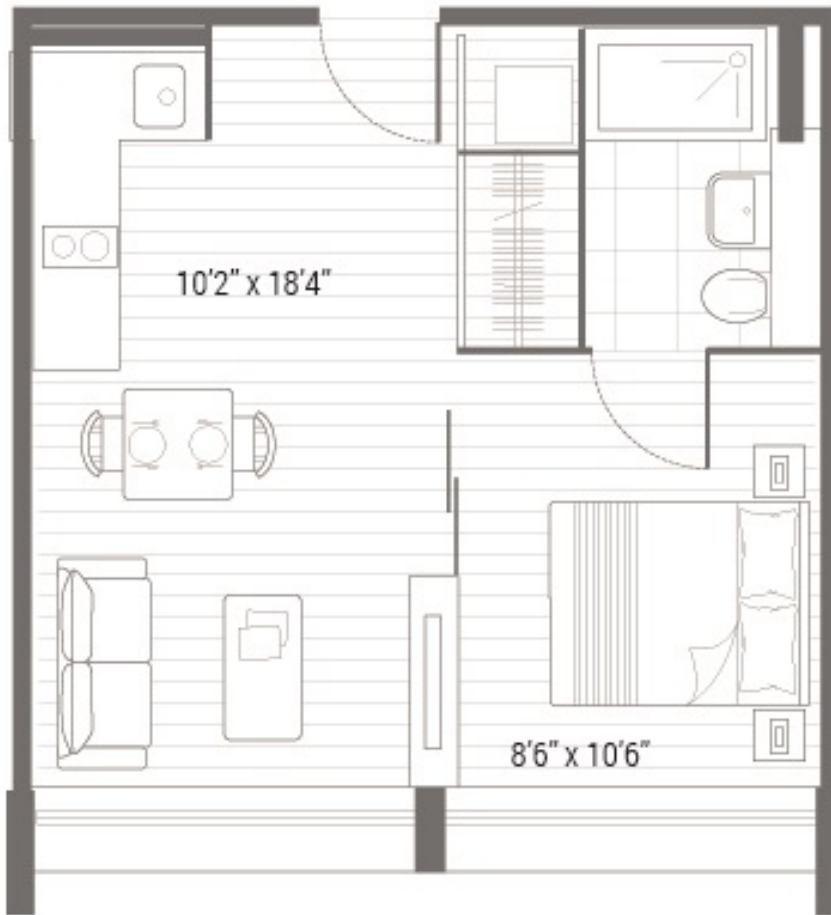


LAMPTON ROAD, TW3

£1,450 pcm

This modern self contained studio apartment is situated on the third floor of an impressive development in the heart of Hounslow. The property has wood flooring and plenty of storage space throughout.

- Modern Studio Apartment
- Third Floor Floor
- Lift Access
- Daytime Concierge
- Communal Garden
- Hounslow Central Station



Total area 348 SQ.FT. 32.3 SQ.M.

LiFE RESIDENTIAL

203 Trentham Court, Victoria
Road, London, W3 6BT
Sales: 020 3668 1112
Lettings: 020 3668 1111

Energy Rating: C. We aim to make our particulars both accurate and reliable. However they are not guaranteed; nor do they form part of an offer or contract. If you require clarification on any points then please contact us, especially if you're traveling some distance to view. Please note that appliances and heating systems have not been tested and therefore no warranties can be given as to their good working order.