



Southport Road

Southport, PR8 5LF

£10,000

AVAILABLE TO LET FOR THE ROYAL BIRKDALE GOLF OPEN 2026

****PRICE ON APPLICATION****

Flexi Agent are proud to present this modern five-bedroom terraced home, available to let exclusively for The Open 2026.

Just a 4.6 mile drive from Royal Birkdale Golf Club, this well-presented property offers easy access to a number of nearby golf courses, including Southport Golf Links, Ainsdale & Southport Golf Club, and Hillside Golf Club — making it a perfect base for attendees and golf enthusiasts.

This property briefly comprises of, entrance hall, bay window front lounge leading to a spacious rear kitchen diner, utility room & WC.

The first floor briefly comprises of, four bedrooms with master featuring ensuite, and family four piece bathroom.

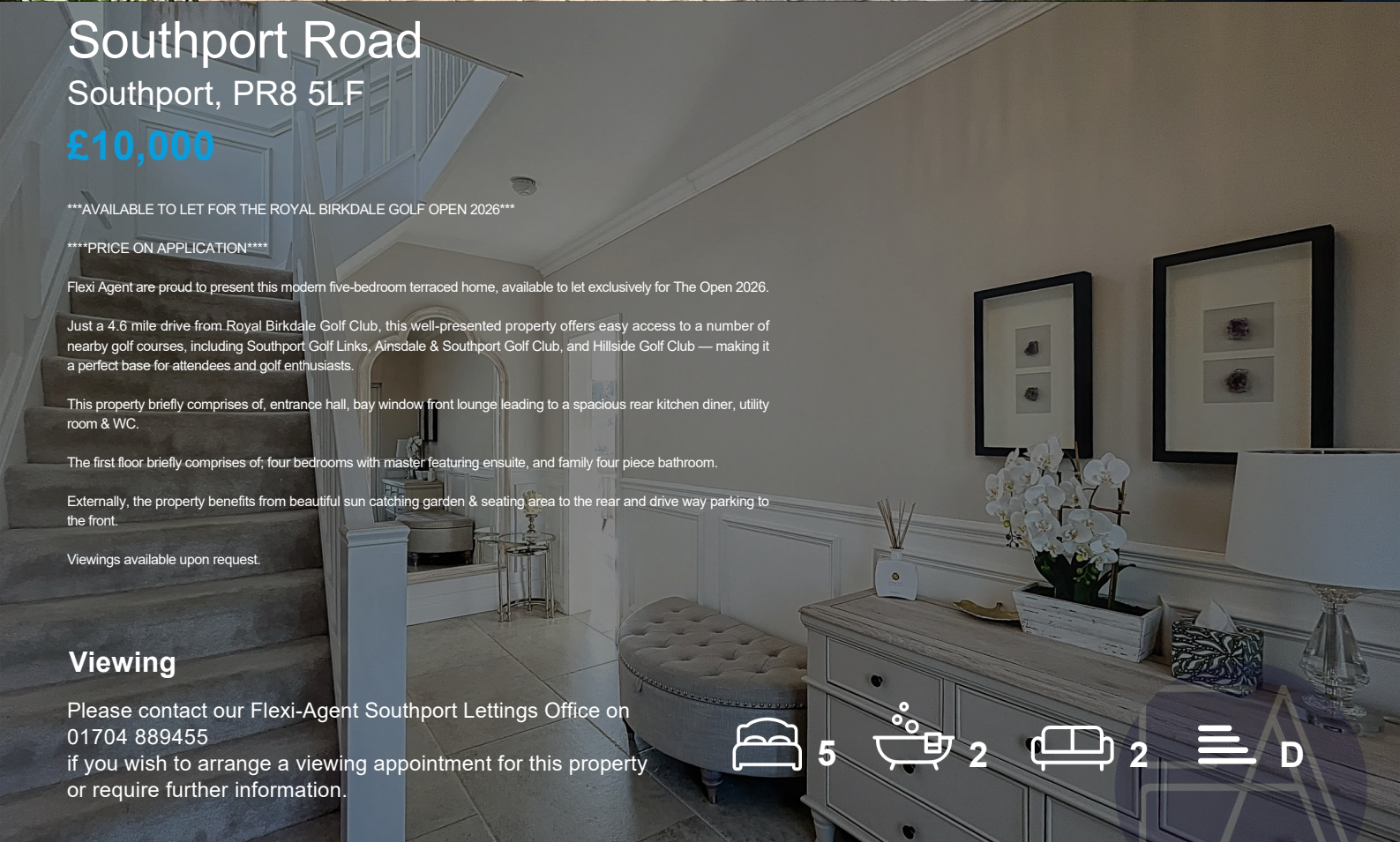
Externally, the property benefits from beautiful sun catching garden & seating area to the rear and drive way parking to the front.

Viewings available upon request.

Viewing

Please contact our Flexi-Agent Southport Lettings Office on 01704 889455 if you wish to arrange a viewing appointment for this property or require further information.

5 2 2 D



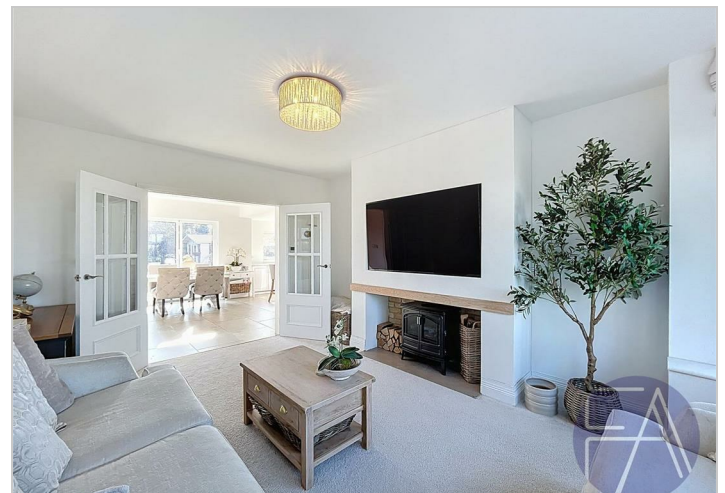
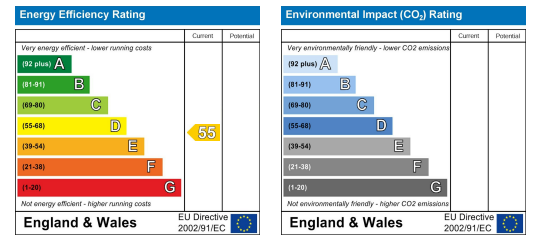
Floor Plan



Area Map



Energy Efficiency Graph



These particulars, whilst believed to be accurate are set out as a general outline only for guidance and do not constitute any part of an offer or contract. Intending purchasers should not rely on them as statements of representation of fact, but must satisfy themselves by inspection or otherwise as to their accuracy. No person in this firm's employment has the authority to make or give any representation or warranty in respect of the property.