



Park View, W3

£799,950

This well-presented four-bedroom mid-terraced home is arranged over three practical floors in the popular North Acton area. Offering a combination of space and convenience, it's set close to local amenities, transport links and generous green open spaces.



The ground floor features open-plan reception rooms that provide a flexible layout suitable for both everyday use and hosting. These well-sized areas are bright, functional, and easy to furnish to suit different needs.

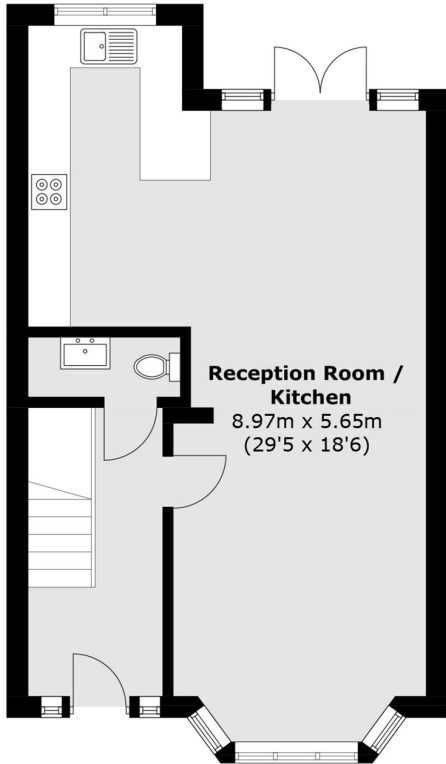
A modern open-plan kitchen sits at the rear of the home, with direct access to the garden, ideal for outdoor meals or simple family downtime. Across the upper floors are four bedrooms, including a spacious converted attic room, offering plenty of versatility.

The property also includes a full family bathroom with a bathtub and two en-suites, providing useful additional facilities for busy households. With North Acton Playing Fields just a short walk away, this home offers reliable space in a convenient and well-connected location.

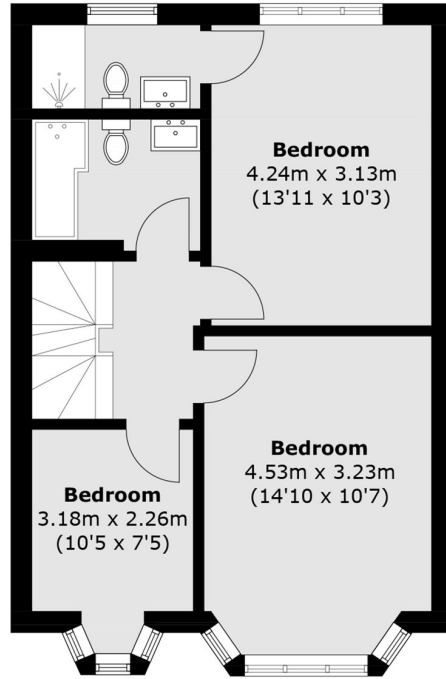
Park View is within 500 metres of Acton Main Line (Elizabeth line) station and just over half a mile from North Acton and West Acton (Central line) stations both of which provide excellent access into town.

- Four Bedrooms • Three Bathrooms • Close To Stations •
 - Off Street Parking • Freehold • Excellent Condition •
-

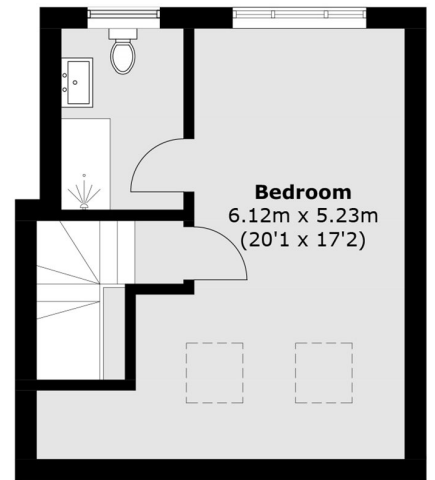




Ground Floor



First Floor



Second Floor

Total area (approx.): 131.6 sq. m (1,416.5 sq. ft)

Robertson Smith & Kempson Acton Sales
137 High Street, Acton,
London, W3 6LY
020 8896 3996
actonsales@robertsonsmithandkempson.co.uk

Energy Rating: D. We aim to make our particulars both accurate and reliable. However they are not guaranteed; nor do they form part of an offer or contract. If you require clarification on any points then please contact us, especially if you're traveling some distance to view. Please note that appliances and heating systems have not been tested and therefore no warranties can be given as to their good working order.