



## Santley Street, SW4

£3,250 Per calendar month

**Dexters**



## Santley Street, SW4

Split over two levels, this top floor flat has been finished to a modern specification. Offering an open plan reception room, three large double bedrooms, two bathrooms and wooden flooring.

Set in the heart of Clapham, this neutrally decorated flat is ideal for professional sharers.

The property has Clapham North and Brixton tube both half a mile away. Also the ever bustling bars, pubs and restaurants of Clapham High Street.

### Features

- Three Double Bedrooms
- Open Plan Reception
- Split-Level Flat
- Two Bathrooms
- Top Floor Flat
- Prime Location

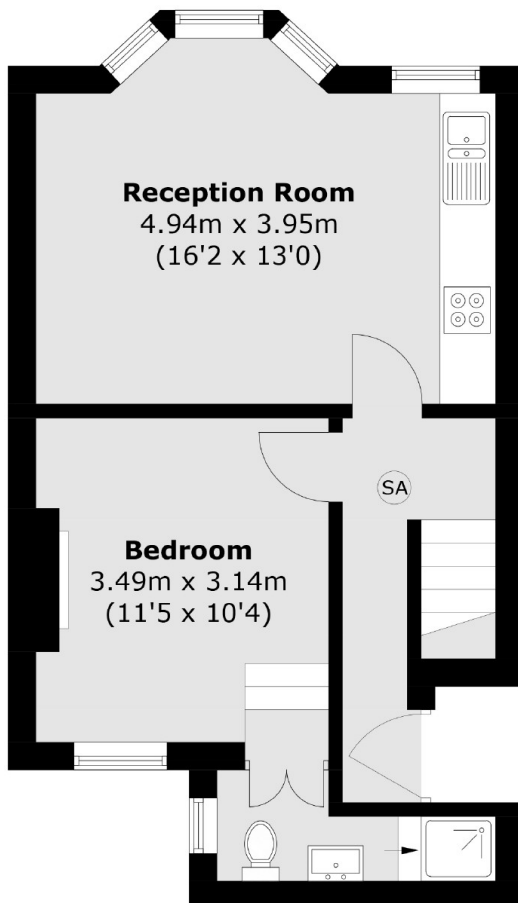




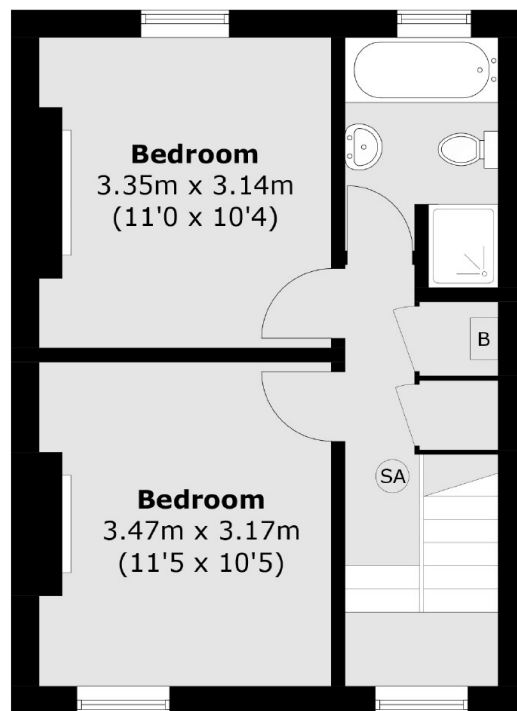
# Santley Street, London, SW4

(B) BOILER

(SA) COMBINED SMOKE  
DETECTOR AND ALARM



**First Floor**



**Second Floor**

Total area (approx.): 73.3 sq. m (788.9 sq. ft)