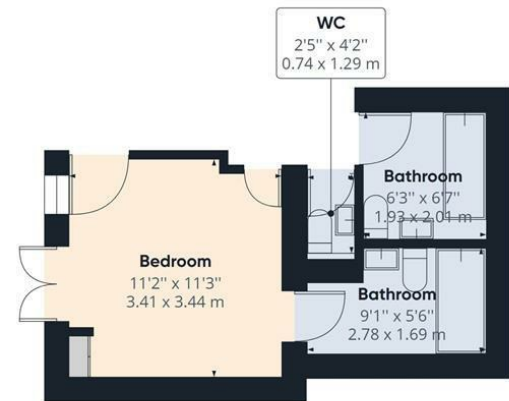


JohnHilton

JohnHilton

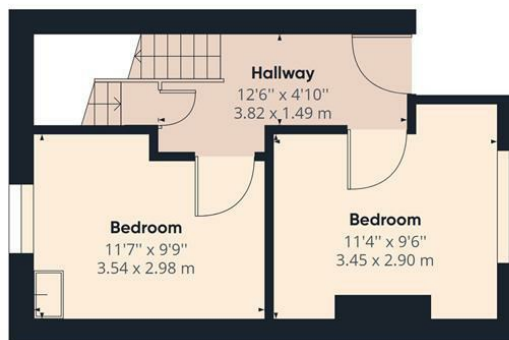
Est 1972



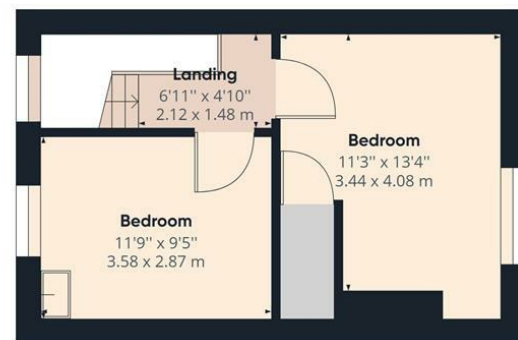
Floor -1



Ground Floor



Floor 1



Floor 2

Approximate total area⁽¹⁾
1160.61 ft²
107.82 m²

(1) Excluding balconies and terraces

While every attempt has been made to ensure accuracy, all measurements are approximate, not to scale. This floor plan is for illustrative purposes only.

GIRAFFE360



Total Area Approx sq ft

28 Islingword Street, Brighton, BN2 9UR

To view, contact John Hilton:
52 High Street, Rottingdean, BN2 7HF
132-135 Lewes Road, Brighton, BN2 3LG
01273 608151 or sales@johnhiltons.co.uk

PCM £3,359 PCM

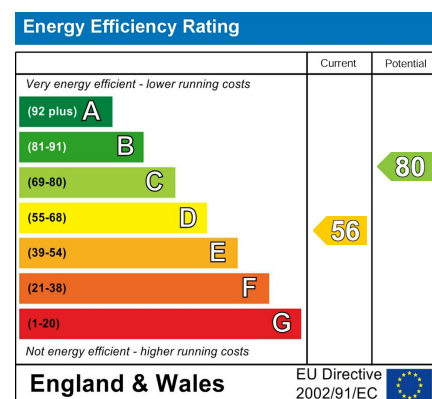
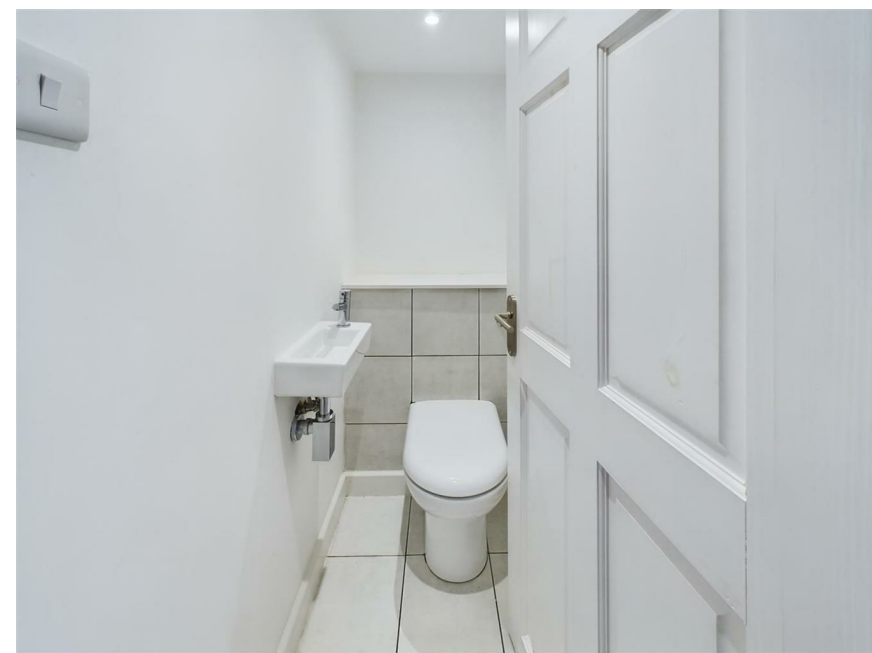
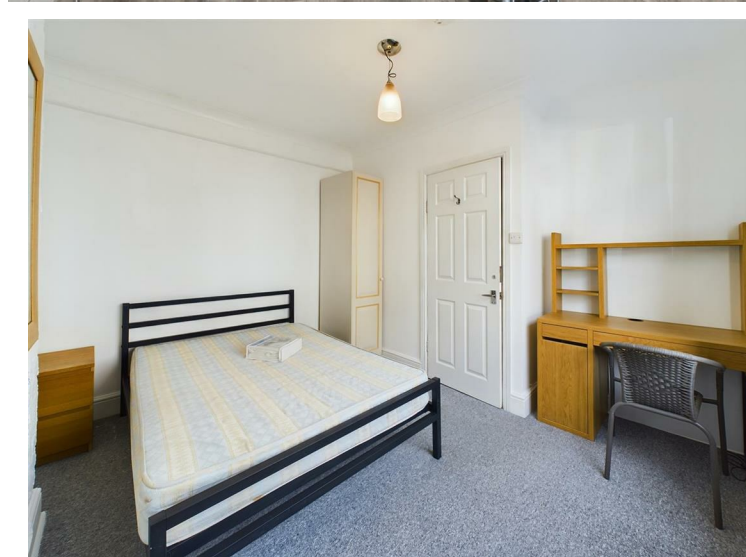
view all our properties at:
www.johnhiltons.co.uk





28 Islingword Street, Brighton, BN2 9UR

- 5 double bedroom STUDENT PROPERTY (students only)
 - £155.03 per person per week / £671.80 per person per month
 - Available 08 September 2026
 - Modern neutral décor
 - Furnished
 - Open plan living room, kitchen
 - One bedroom with an ensuite, one with own WC, further bathroom and toilet (4 x WCs)
 - Patio garden
 - Popular location in Hanover
 - Council tax band C
 - 11-month tenancy
- A holding deposit of £775.15 will be required to secure the Property, equivalent to 1 week's rent. Once referencing is complete, the Holding Deposit will go toward the first month's rent.
- The above details are intended for information purposes only and do not constitute an offer or form part of a contract. A tenancy will be granted subject to referencing and contracts.
- Please note that rent is shown per person per week based on 52 weeks of the year. The rental amount as advertised is due monthly.
- All tenants must be full-time students during the term of this tenancy.



Council Tax Band: **C**