



## George Street

St. Albans, AL3 8JX

Two-bedroom end-of-terrace cottage with low-maintenance garden in the heart of Markyate village. A short drive to Harpenden town centre and station. **\*\*CHAIN FREE\*\***

**Guide price £325,000**

# George Street

St. Albans, AL3 8JX



- End-of-terrace cottage
- Low-maintenance garden
- In the heart of Markyate village
- Short drive to Harpenden town centre & station
- \*\*CHAIN FREE\*\*
- Council Tax Band D

## Entrance

## Kitchen

10'11" x 10'1" (3.33 x 3.08)

## Sitting/Dining Room

20'1" x 11'1" (6.14 x 3.40)

## Bedroom One

11'8" x 11'6" (3.57 x 3.53)

## Bedroom Two

11'0" x 10'2" (3.37 x 3.11)

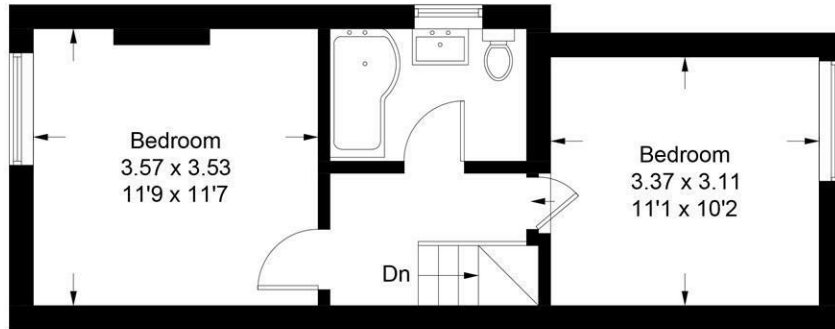
## Bathroom



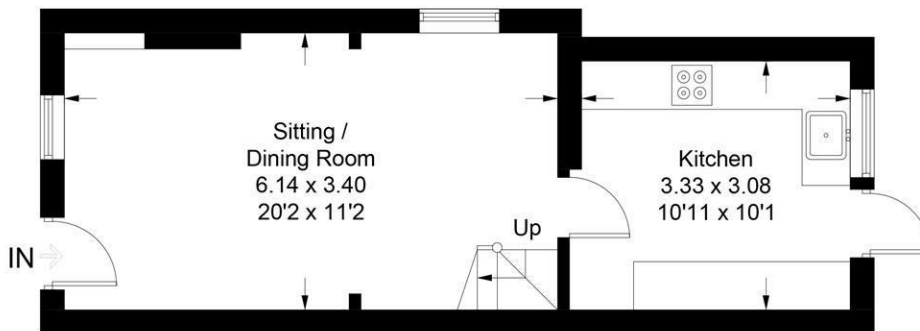


## George Street

Approximate Gross Internal Area = 65.3 sq m / 703 sq ft



**First Floor**



**Ground Floor**

This plan is for layout guidance only. Not drawn to scale unless stated. Windows and door openings are approximate. Whilst every care is taken in the preparation of this plan, please check all dimensions, shapes and compass bearings before making any decisions reliant upon them. (ID1286701)

These particulars, whilst believed to be accurate are set out as a general outline only for guidance and do not constitute any part of an offer or contract. Intending purchasers should not rely on them as statements of representation of fact, but must satisfy themselves by inspection or otherwise as to their accuracy. No person in this firm's employment has the authority to make or give any representation or warranty in respect of the property.

