



Clara Street, Coventry, CV2 4ET

**SHELDON
BOSLEY
KNIGHT** LAND AND
PROPERTY
PROFESSIONALS

Property Description

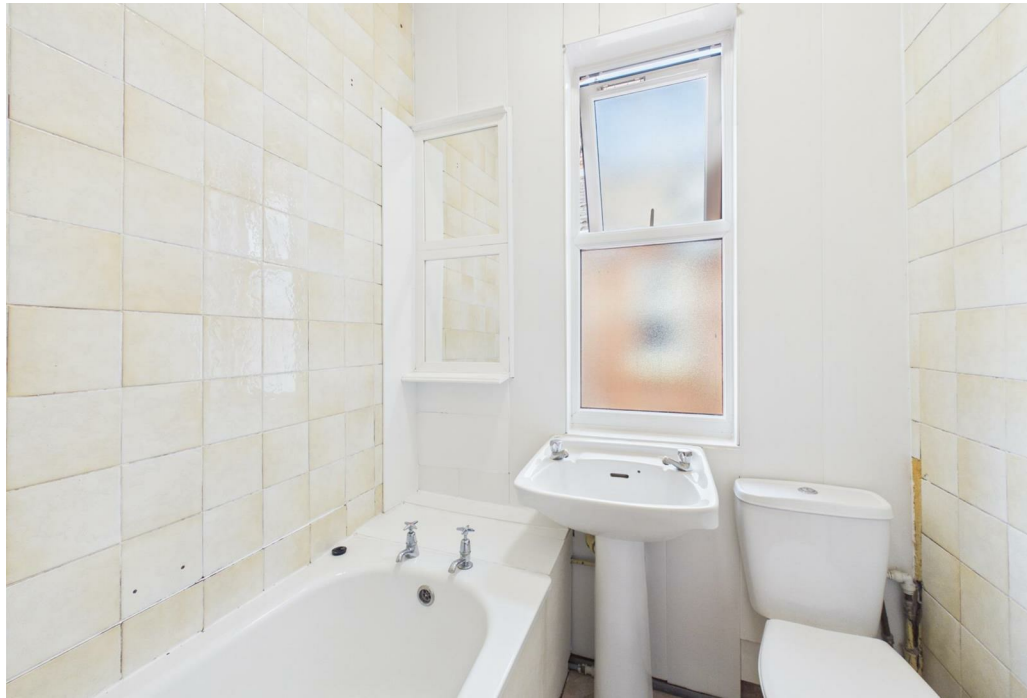
*** AVAILABLE NOW - AVAILABLE WITH DEPOSIT ALTERNATIVE *** This well-presented one-bedroom first-floor flat is located in the popular residential area of Stoke, Coventry, offering convenient access to Coventry City Centre, local amenities, and transport links.

The property comprises an entrance hallway, a fitted kitchen with space for dining, a spacious lounge, one double bedroom, and a bathroom with bath, WC and sink.

Further benefits include on-street parking and a location within walking distance of Coventry City Centre.

Offered UNFURNISHED. Council Tax Band A. Energy Rating C.





Key Features

- Stoke
- One Bedroom Flat
- First Floor
- Available Now
- Unfurnished
- Council Tax Band A
- On-Street Parking
- Spacious Throughout
- Located Close To Local Amenities

£795 PCM