



Hornsey Road, N7

£200,000

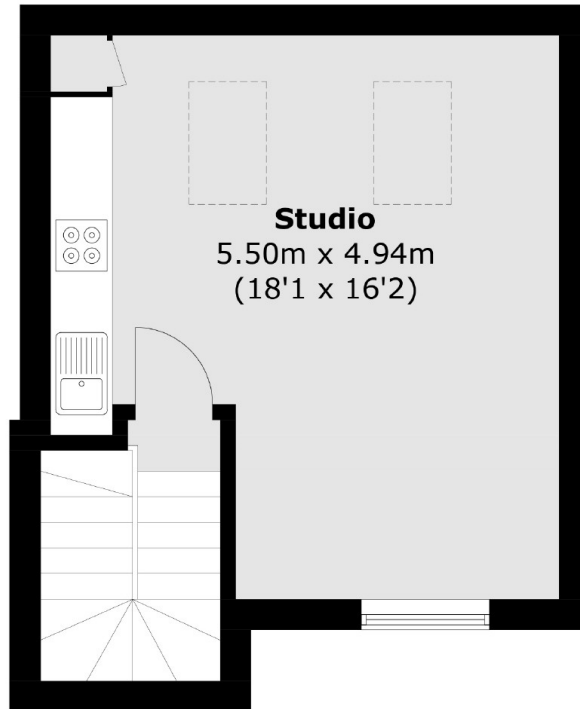
A charming studio flat located in one of the Islington boroughs most vibrant areas. This property offers a split-level aspect bright open space, located at the top of this terraced building.

This property is close to Archway station (Northern line) and moments away from the Overground. This flat has plenty of amenities close to hand, such as shops, cafés, restaurants and local bars.

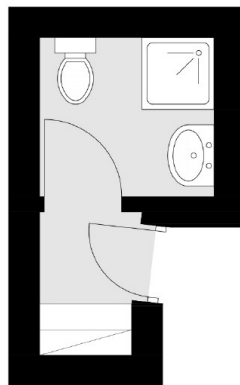
Features

- Great Transport Links
- Wooden Floors
- Open Plan
- Top Floor Flat
- Period Conversion
- Chain Free

Hornsey Road, London, N7



Second Floor



First Floor

Total area (approx.): 33.0 sq. m (355.2 sq. ft)