



Wilton Road

Salford



In Excess of £575,000

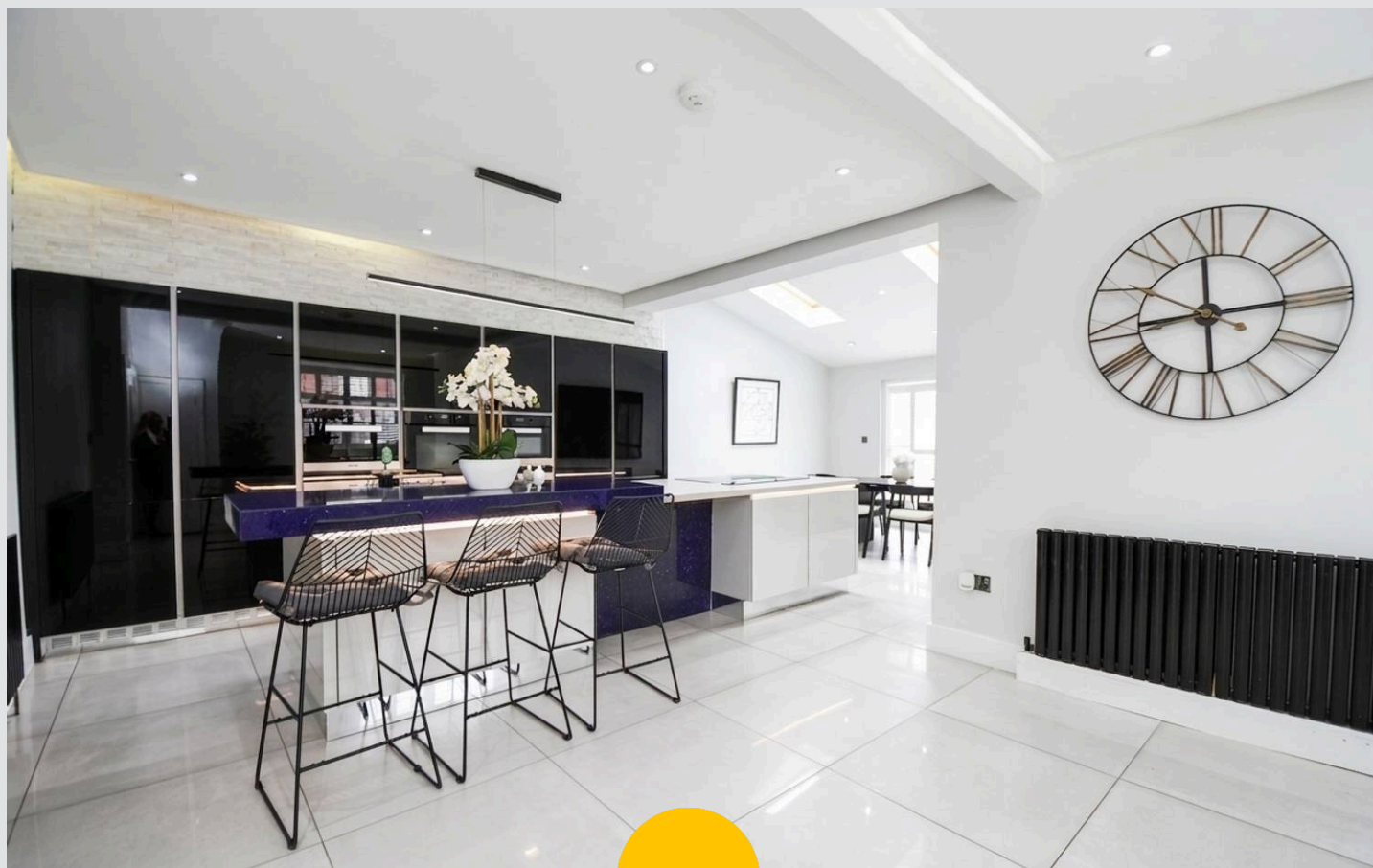
Wilton Road

Salford

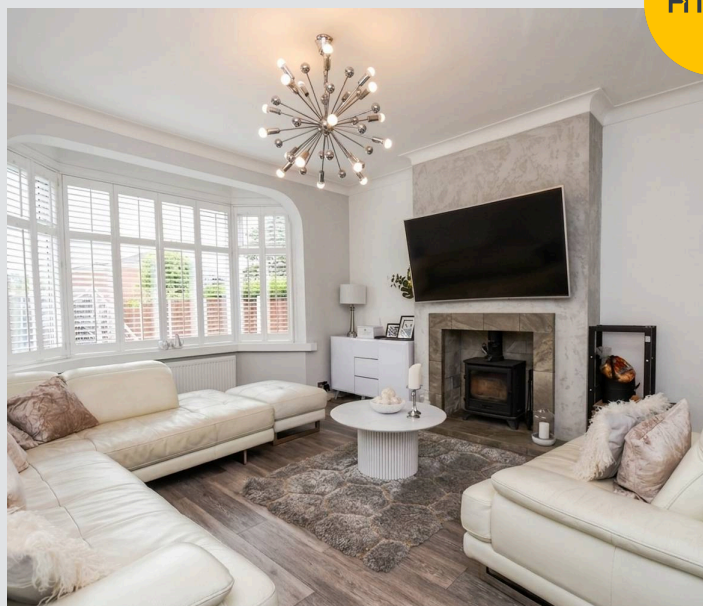
Council Tax band: D

Tenure: Freehold

- STUNNING five bedroom semi-detached property situated over three fantastic floors!
- Contemporary kitchen complete with a centre island and an extended dining room
- Five generous sized bedrooms, with the master on the top floor benefiting from a lounge area and an en-suite!
- Two outbuildings, one complete with a gym and the other a cinema room
- Bay fronted lounge
- Utility room and downstairs W.C
- Off-road parking and low maintenance front and rear gardens
- Stunning four piece bathroom suite
- Located on a Corner Plot Just a Short Walk from Salford Royal Hospital, and Within Catchment of Ellesmere Park High School
- Close to Excellent Transport Links into Salford Quays, Media City and Manchester City Centre



HILLS



Porch

Hall

11' 11" x 8' 3" (3.64m x 2.52m)

Lounge

14' 9" x 16' 2" (4.49m x 4.93m)

Kitchen/Diner

26' 7" x 22' 9" (8.09m x 6.94m)

Utility

8' 3" x 8' 0" (2.52m x 2.43m)

WC

3' 11" x 8' 10" (1.20m x 2.68m)

Landing

Bedroom one

23' 5" x 16' 3" (7.13m x 4.95m)

Bedroom Two

12' 6" x 16' 1" (3.81m x 4.90m)

Bedroom Three

10' 2" x 8' 4" (3.10m x 2.54m)

Bedroom Four

13' 5" x 7' 5" (4.08m x 2.26m)

Bedroom Five

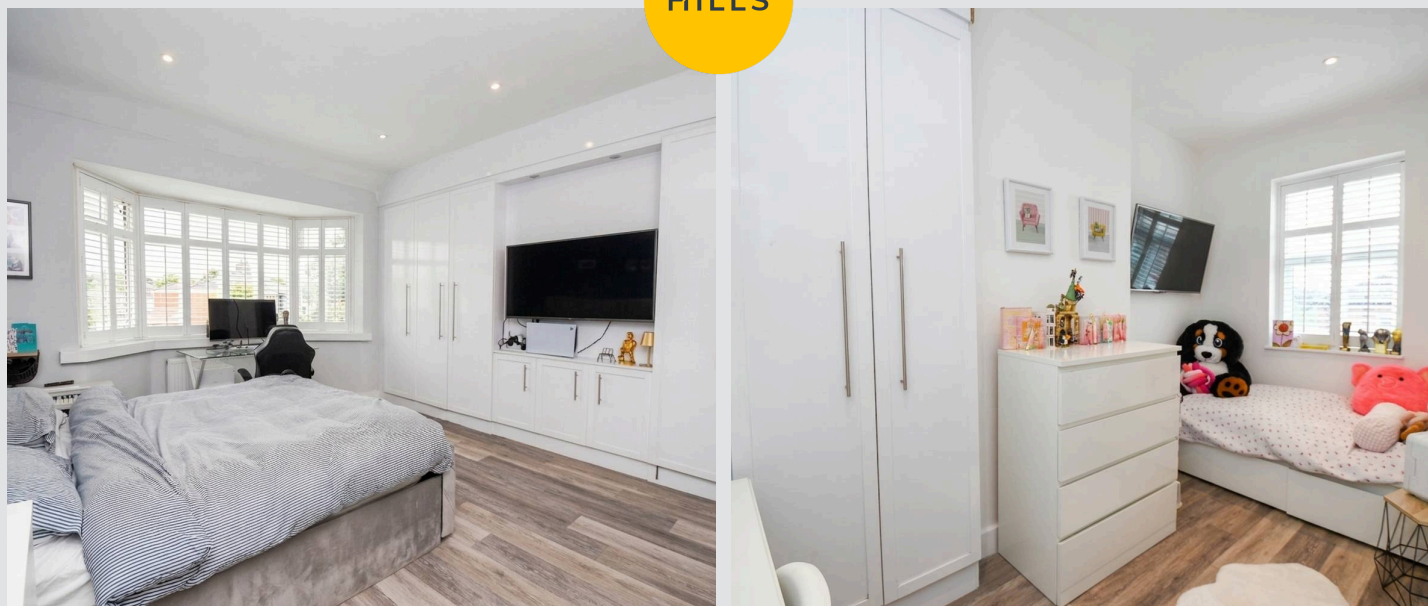
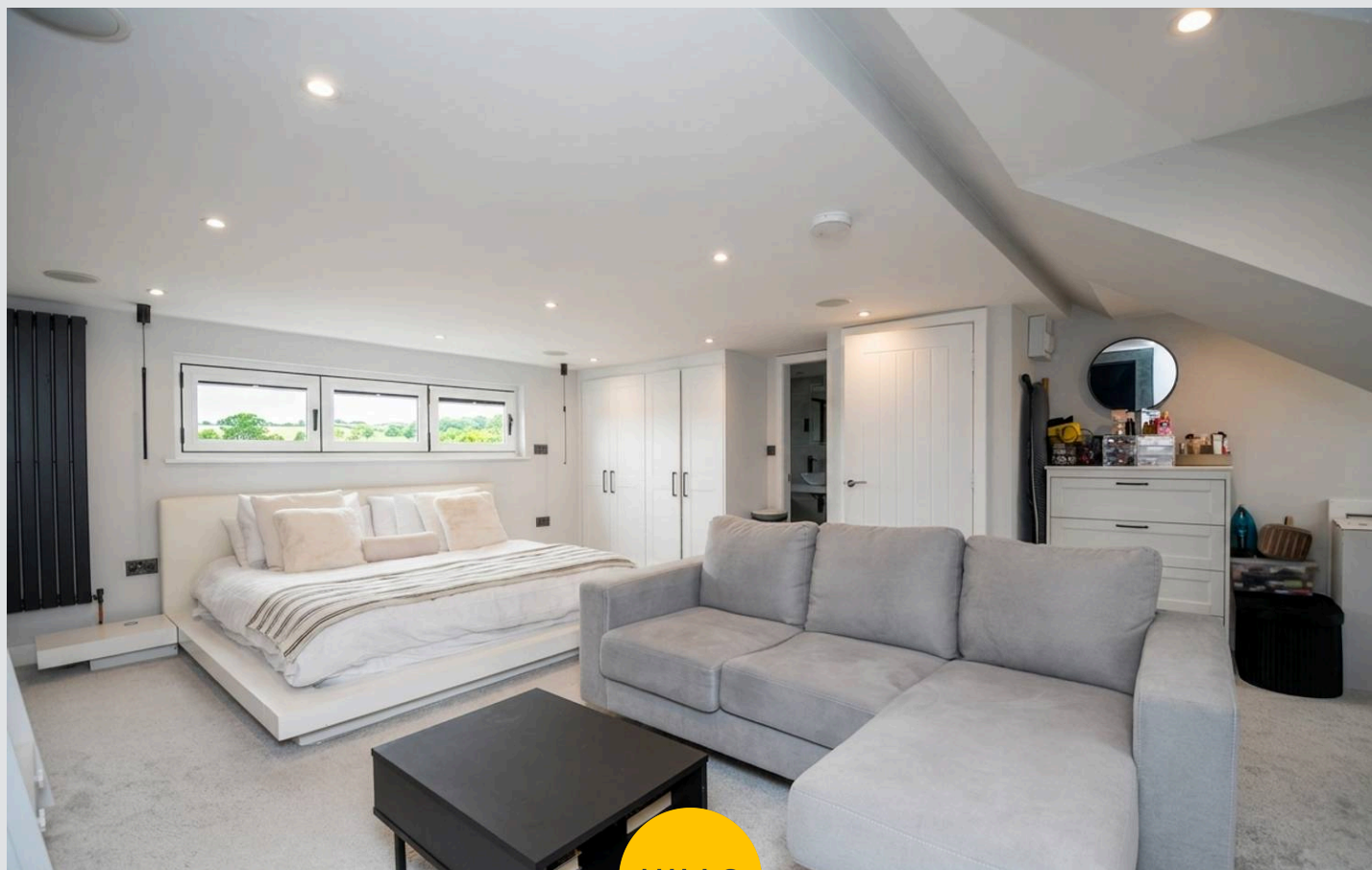
10' 10" x 6' 5" (3.31m x 1.96m)

Bathroom

9' 8" x 8' 10" (2.95m x 2.68m)

En-Suite

5' 3" x 9' 5" (1.59m x 2.88m)





HILLS





HILLS







Hills | Salfords Estate Agent

Hills Residential, Sentinel House Albert Street – M30 0SS

0161 707 4900

sales@hills.agency

www.hills.agency/



By law, we are required to conduct anti-money laundering checks on all potential buyers and sellers. In line with HMRC guidelines, our trusted partner, Coadjute, will securely manage these checks on our behalf. A non-refundable fee of £45 + VAT per person will apply, and Coadjute will handle the payment. Once an offer is accepted, Coadjute will send a secure link for you to complete the biometric checks. These checks must be completed before we can send the memorandum of sale to all parties. PLEASE NOTE: The Agent has not tested any equipment, fixtures, fittings or services so cannot verify that they are in working order or fit for the purpose. References to the properties tenure are based on information supplied by the seller. You are advised to check the availability of this property before travelling any distance to view. Every effort has been made to ensure these particulars are correct and not misleading but their accuracy is not guaranteed nor do they form part of any contract.