



## Fulham Palace Road, SW6

£3,000 pcm



• 3 bedrooms

• First floor

• Balcony









## ABOUT THE PROPERTY

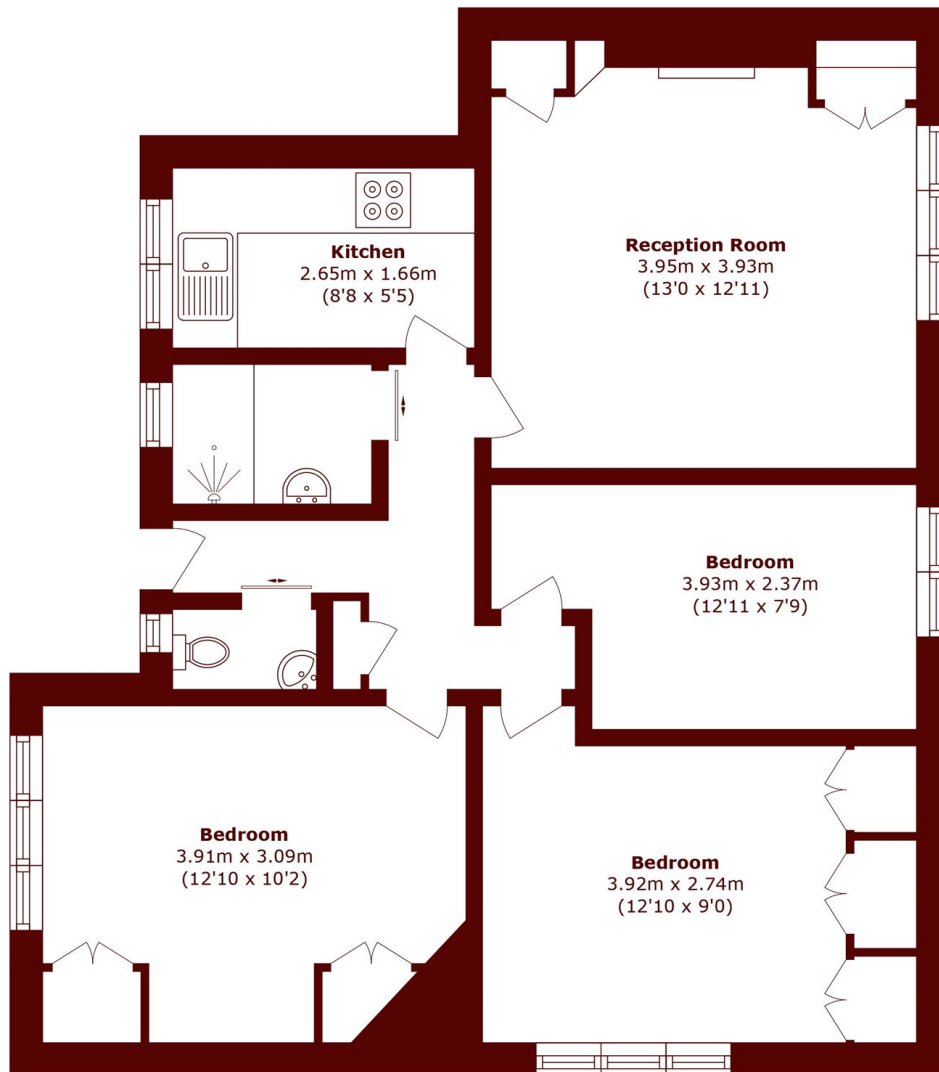
Available to let, this three-bedroom purpose-built apartment is located on the first floor of Robert Owen House and benefits from its own private entrance and a terrace.

The accommodation comprises two generous double bedrooms and a third bedroom, a modern bathroom with a separate WC, a spacious reception room ideal for entertaining, and a fitted kitchen. Residents also benefit from off-street parking.

Robert Owen House is located just off the Fulham Palace Road and Harbord Street offering excellent road links in all directions. The open spaces of Bishops Park are close by, as are a selection of popular local cafés and shops.

Putney Bridge is the closest tube station; however Hammersmith is also nearby and there are excellent bus links from outside the property.





Total area (approx.): 63.8 sq. m (686.7 sq. ft)

## Marsh & Parsons Bishops Park

333 Fulham Palace Road,  
London, SW6 6TE  
020 7993 9888