



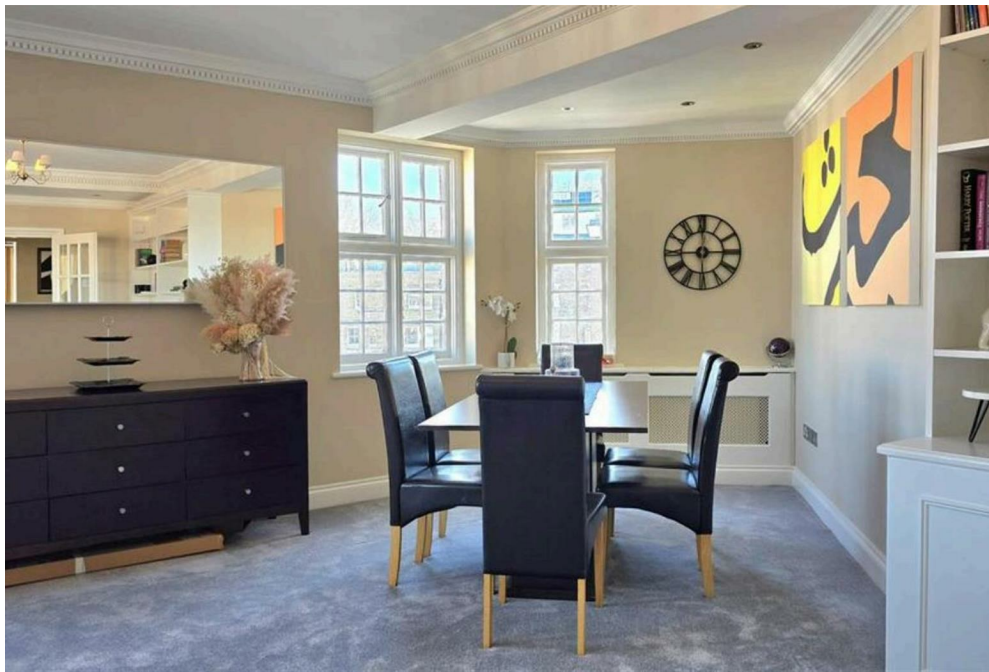
Harrowby Court, Harrowby Street,
Marylebone, W1H

£1,495 Per Week,

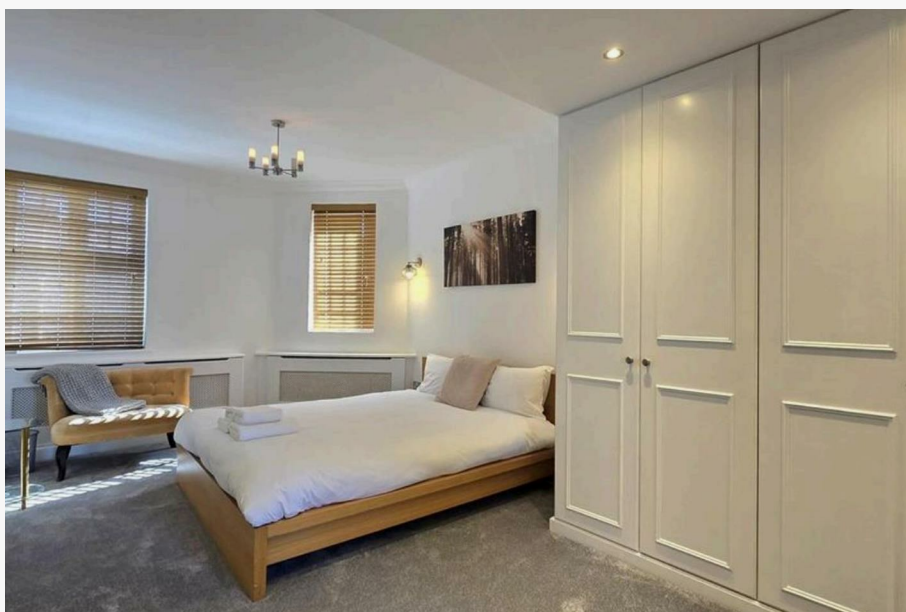
NAPIER WATT

T: 0207 935 0011
E: enquiries@napierwatt.co.uk
W: napierwatt.co.uk

35 Berkeley Square, Mayfair, London, W1J 5BF







Description

A spacious three-bedroom penthouse in the heart of Marylebone. The apartment consists of an enormous living, three generously sized double bedrooms, two bathrooms, guest cloakroom and a fully fitted kitchen. Located moments from Edgware Road and within walking distance of Paddington, Hyde Park and Marylebone High Street, the property offers outstanding connectivity and access to central London amenities. Available, furnished.

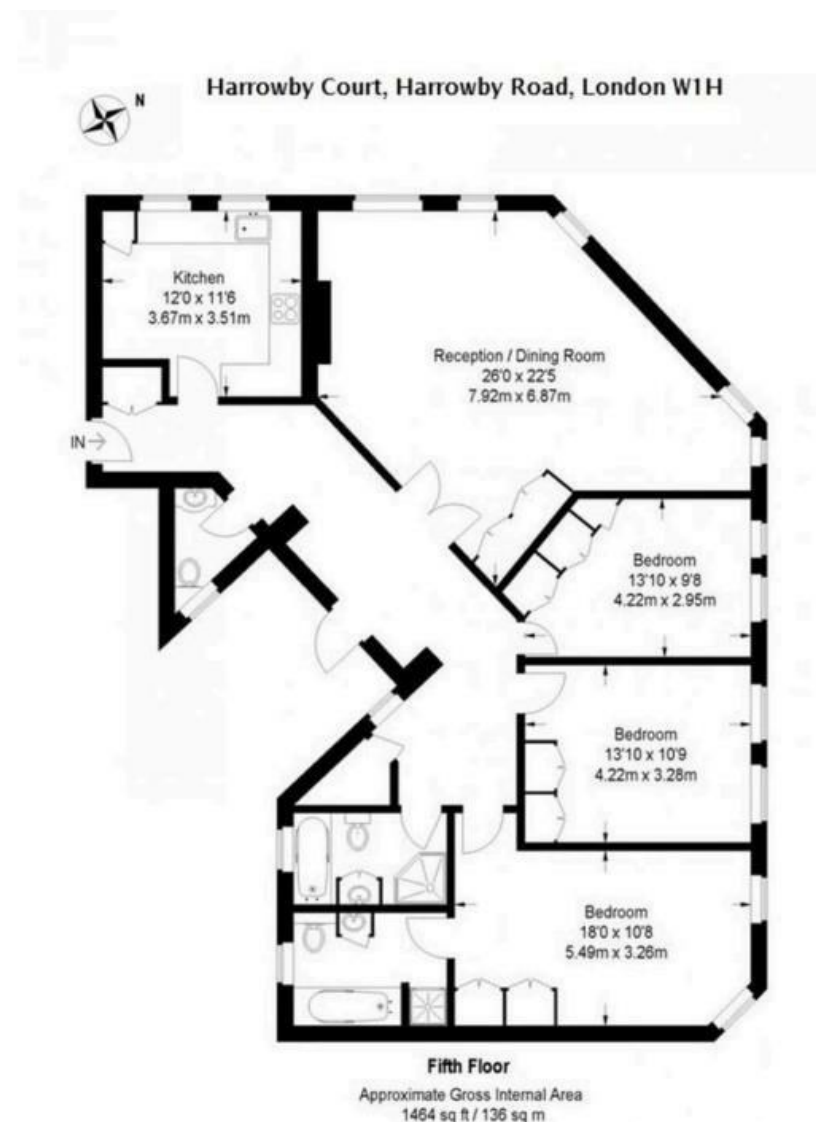
3 Bedrooms : 2 Bathrooms : Guest W.C. : Lift : EPC Rating D : Westminster Council Tax Band F

Key Features

- THREE BEDROOMS
- PENTHOUSE
- LIFT
- LATERAL

Terms

Fees & Charges: Tenancies exceeding £100,000 Per annum £480 inc VAT, Tenancies where a company is a tenant £480 Inc VAT.



IMPORTANT: We would inform prospective purchasers that these sales particulars have been prepared as a general guide only. A detailed survey has not been carried out, nor the services, appliances and fittings tested. Room sizes should not be relied upon for furnishing purposes and are approximate. If floor plans are included, they are for guidance only and illustration purposes only and may not be to scale. If there are any important matters likely to affect your decision to buy, please contact us before viewing the property.