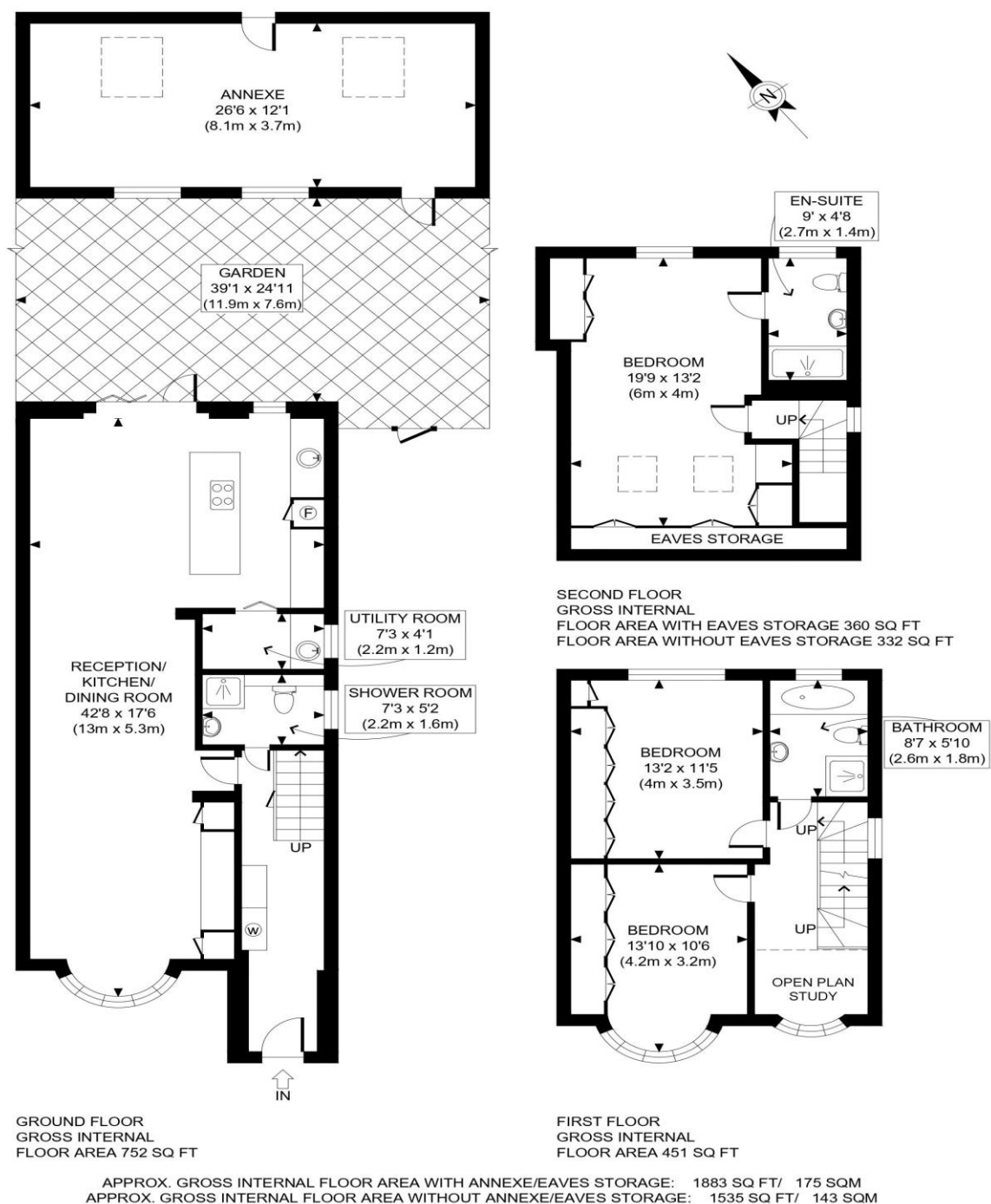


The Floorplan...



This plan is for illustrative purposes only and should be used as such by any prospective client. Whilst every attempt has been made to ensure the accuracy of the Floor Plan contained here, measurements of the doors, windows, rooms and any other items are approximate and no responsibility is taken for any errors, omissions, or misstatement. The services, systems and appliances shown have not been tested and no guarantee as to the operability or efficiency can be given.

PROPERTY PHOTO PLANS

More Details From...

Call: **Brian Cox North Harrow: 020 3866 6640**
Email: nhadmin@brian-cox.co.uk
Web: www.brian-cox.co.uk



0203 866 6640
brian-cox.co.uk



Brian Cox Estate Agents are delighted to offer this four-bedroom semi-detached three bathroom home with a garage to the side on Tintern Way to the market! This property is set within a sought-after residential location. Accommodation: entrance hallway, spacious lounge open plan to stunning fitted kitchen/dining area, utility room, four good sized bedrooms, down stairs bathroom, fitted luxurious bathroom to the first floor and ensuite shower room to master bedroom. Positioned within easy reach of local amenities, highly regarded schools, and excellent transport links, this is a rare opportunity to secure a sizeable home in a well-connected and desirable location. The property has a fantastic out building and low maintenance 50ft garden. This property is ready to move into and requires no updating. Call now before it's too late!



£795,000

Tintern Way, Harrow HA2 0RZ

Consumer Protection from Unfair Trading Regulations 2008 We have not tested any apparatus, equipment, fixtures, fittings or services and so cannot verify that they are in working order or fit for purpose. You are advised to obtain verification from your solicitor or surveyor. References to the tenure of a property are based on information supplied by the seller. We have not had sight of the title documents and a buyer is advised to obtain verification from their solicitor. Items shown in photographs are not included unless specifically mentioned within the sales particulars, but may be available by separate negotiation. We advise you to book an appointment to view before embarking on any journey to see a property, and check its availability.



In Brief...

- Four Bedrooms
- Three Luxurious Bathrooms
- Skilfully Extended
- Amazing Open Plan Layout
- Stunning Decorative Condition
- Own Drive and attractive Garden
- Delightful Out Building



The Location...

Nearest Stations ...

Rayners Lane Station 0.5 miles
West Harrow Station 0.5 miles
South Harrow Station 0.7 miles

Tintern Way is situated close to West Harrow & Rayners Lane train stations. North Harrow & South Harrow stations are walking distance away. There is also a number of high streets with a vast array of local shops, coffee houses and restaurants. Within short walking distance is Grange Primary School, Vaughan Primary School & Whitmore High School, as well as Shaftesbury Circle's local amenities.