



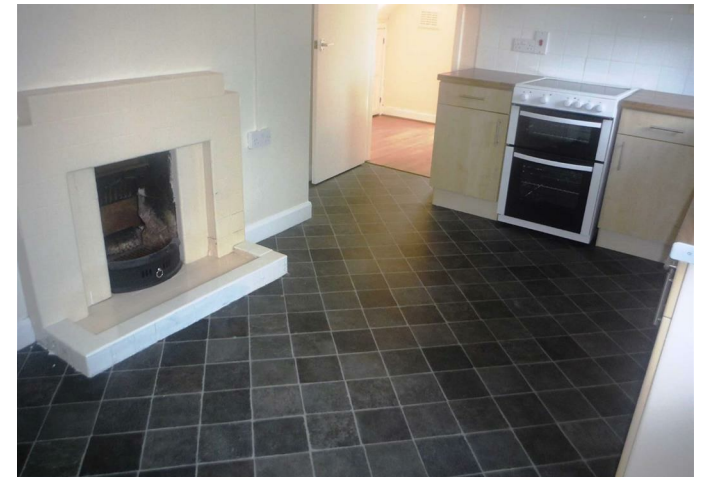
📍 63A Eastleigh Road, Devizes, Wiltshire, SN10 3EH

🔗 £700 PCM

- Ground Floor
- Spacious Bedsit
- Garden
- In Reach of Town
- Local Amenities
- Available Now



🏠 EPC Rating C



Well presented ground floor studio flat with lovely garden, close to very local amenities and within walking distance of Devizes town. Accommodation comprises entrance hall, good size kitchen diner with character open fire, electric cooker and fridge freezer, large combined lounge / bedroom and shower room. Externally there is a large rear garden and useful brick store. Available early August, u/f, £700pcm



Disclaimer These particulars, whilst believed to be accurate are set out as a general outline only for guidance and do not constitute any part of an offer or contract. Intending purchasers should not rely on them as statements of representation of fact, but must satisfy themselves by inspection or otherwise as to their accuracy. No person in this firm's employment has the authority to make or give any representation or warranty in respect of the property. All measurements and distances are approximate only. Your home is at risk if you do not keep up repayments on a mortgage or other loan secured on it.

The logo for strakers, featuring the word "strakers" in a lowercase, serif font. The letter 's' is stylized with a decorative flourish that loops around the top of the letter.

**For further details** 01380 722995  
lettings@strakers.co.uk

In branch | Online | On the move  
strakers.co.uk