



7545445 Alcester Road, Studley, B80 7AR
£270,000



7545445 Alcester Road, Studley, B80 7AR

£270,000

Description

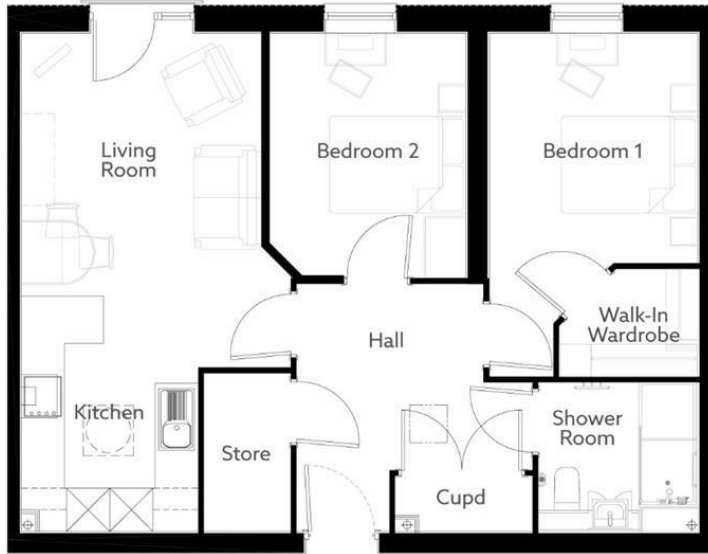


Situation



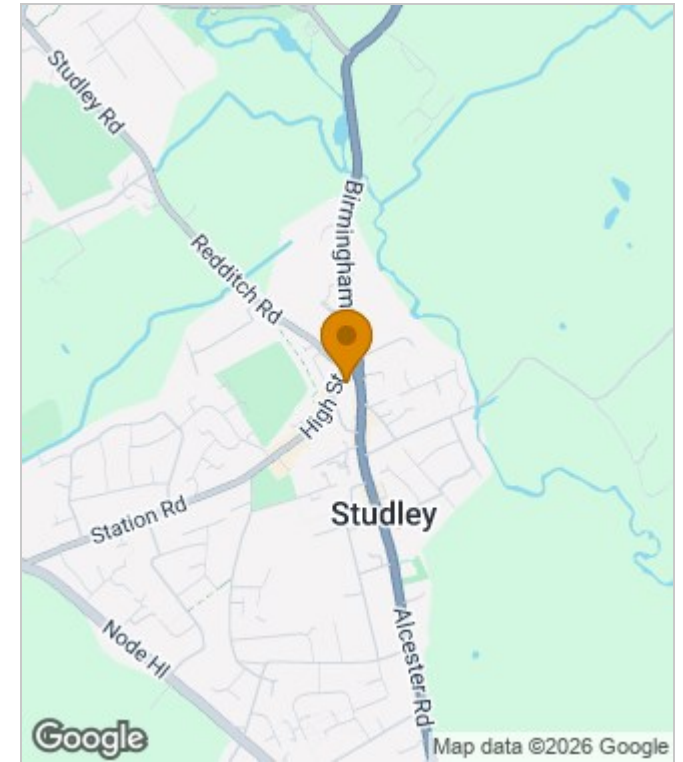
null
Council Tax Band:
Available:

Floor Plans

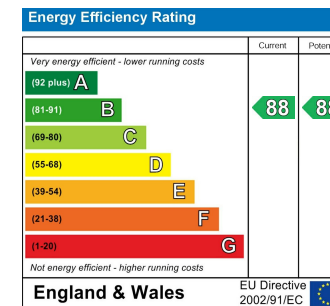


Living (Max)	10' - 11" x 13' - 2"	3340mm x 4035mm
Kitchen (Max)	7' - 10" x 9' - 5"	2410mm x 2890mm
Shower room (Max)	7' - 2" x 6' - 8"	2200mm x 2050mm
Bedroom 1 (Max)	9' - 6" x 10' - 6"	2905mm x 3220mm
Bedroom 2 (Max)	9' - 1" x 11' - 1"	2770mm x 3405mm

Area Map



Energy Performance Graph



These particulars, whilst believed to be accurate are set out as a general outline only for guidance and do not constitute any part of an offer or contract. Intending purchasers should not rely on them as statements of representation of fact, but must satisfy themselves by inspection or otherwise as to their accuracy. No person in this firm's employment has the authority to make or give any representation or warranty in respect of the property.