



Celtic Way, ##Invalid offers in excess of £425,000

- LARGER THAN AVERAGE REAR GARDEN
- 5 BEDROOMS, DRESSING ROOM, EN SUITE, BATHROOM & CLOAKROOM
- 2 RECEPTION ROOMS & KITCHEN/ UTILITY ROOM & DINING ROOM
- Council Tax Band - E
- BALCONY - PANORAMIC VIEWS OVER SPORTS FIELD & SEA VIEWS
- EPC Rating: C



 5
  2
  2



About the property

Briefly comprising of hallway, cloakroom, living room, dining room, kitchen/ utility room, family room, landing, 5 bedrooms *space for home office*, master bedroom with ensuite, family bathroom, larger than average rear garden *potential to extend further*, driveway.

Accommodation

Entrance Hallway

UPVC glazed door, ceiling rose, coving, power points, radiator, wood effect laminate flooring, stairs to first floor, doors leading into Cloakroom and Living Room;-

Cloakroom

W.C., wash hand basin, splash back tiled areas, radiator, vinyl flooring, double glazed opaque window to front aspect.

Living Room



20' 1" into bay x 13' 8" max (6.12m into bay x 4.17m max)

T.V. point, power points, radiator, ceiling rose, coving, slate hearth, log burner to remain, oak surround and mantle, wood effect laminate flooring, double glazed bay window to front aspect, opening to Dining Room;-

Dining Room

11' 5" x 8' 8" (3.48m x 2.64m)

Wood effect laminate flooring, coving, ceiling rose, power points, radiator, double glazed French doors to rear garden, door to Kitchen;-

Kitchen

17' 11" max x 13' 6" max (5.46m max x 4.11m max)

Matching wall and base units with complimentary work tops, inset ceramic 'Villeroy and Bosh' sink, drainer and chrome mixer tap, gas AGA with over head cooker hood, space for fridge or freezer, space for washing machine and tumble dryer, fitted breakfast bar, power points, radiator, splash back tiled areas, wood effect tiled flooring, fitted storage cupboard under stairs, double glazed windows to rear garden aspect, UPVC glazed door to rear, door into Family Room;-

Family Room

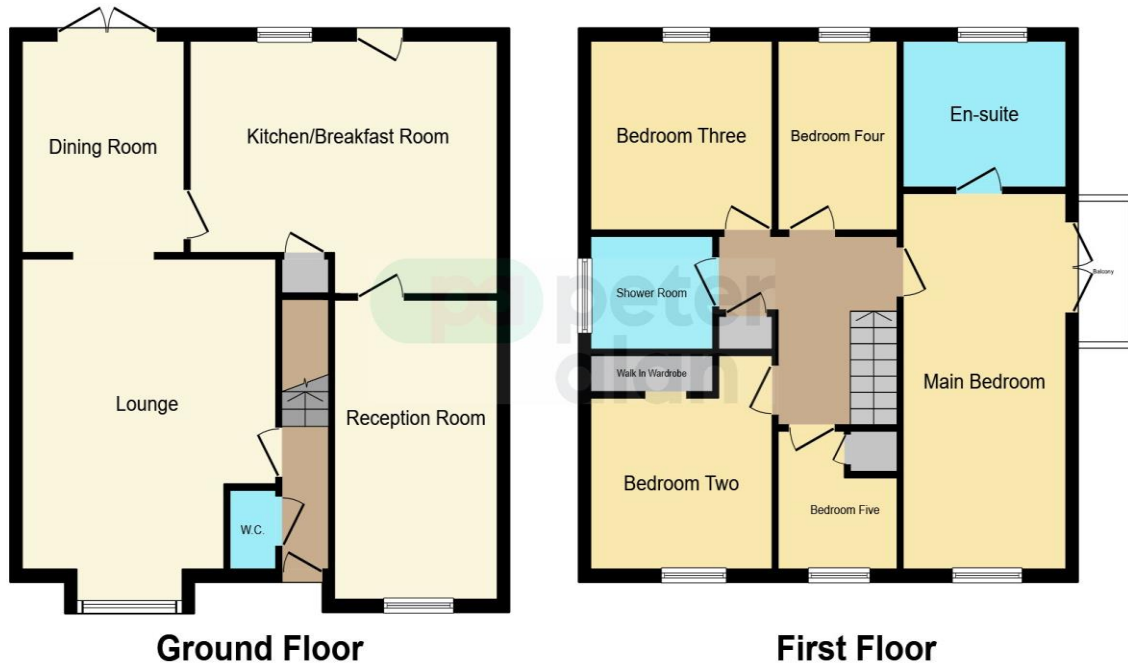
Solid wood flooring, coving, power points, radiator, double glazed window to front.

Landing

01446 733224

barry@peteralan.co.uk

Floorplan



This floor plan is for illustrative purposes only. It is not drawn to scale. Any measurements, floor areas (including any total floor area), openings and orientation are approximate. No details are guaranteed, they cannot be relied upon for any purpose and they do not form part of any agreement. No liability is taken for any error, omission or misstatement. A party must rely upon its own inspection(s). Powered by www.focalagent.com

Important Information

Note while we endeavour to make our sales details accurate and reliable, if there is any point which is of particular interest to you, please contact the office and we will be pleased to confirm the position for you. We have not personally tested any apparatus, equipment, fixtures, fittings or services and cannot verify they are in working order or fit for their purposes. Nothing in these particulars is intended to indicate that carpets or curtains, furnishings or fittings, electrical goods (whether wired or not). Gas fires or light fittings or any other fixtures not expressly included form part of the property offered for sale. This computer generated Floorplan, if applicable, is intended as a general guide to the layout and design of the property. It is not to scale and should not be relied upon for dimensions. Tenure: We cannot confirm the tenure of the property as we have not had access to the legal documents. The buyer is advised to obtain verification from their solicitor or surveyor.

Peter Alan Limited is registered in England and Wales under company number 2073153, Registered Office is Cumbria House, 16-20 Hockliffe Street, Leighton Buzzard, Bedfordshire, LU7 1GN. VAT Registration Number is 500 2481 05. For activities relating to regulated mortgages and non-investment insurance contracts, Peter Alan Limited is an appointed representative of Connells Limited which is authorised and regulated by the Financial Conduct Authority. Connells Limited's Financial Services Register number is 302221. Most buy-to-let