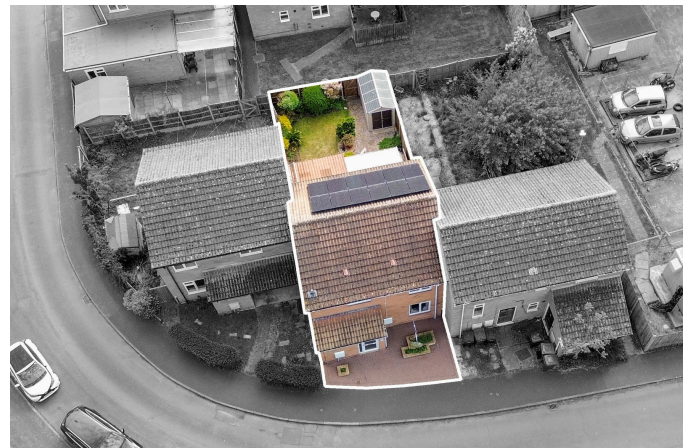


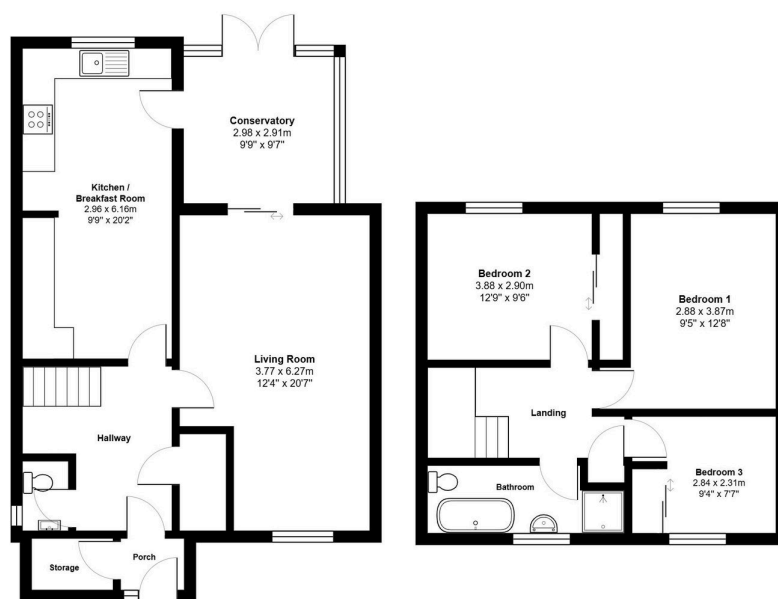
Langley Close, St. Ives, PE27 5SE

Guide Price £280,000

3 1 2



- A three bedroom mid-terrace home in a quiet St Ives close – well cared for throughout
- Generous living room flowing through into the conservatory
- Handy ground floor WC always useful for day to day life
- Fully owned, 12 panel 3kW solar system keeping energy costs low
- Virtual tour available upon request
- Practical kitchen/breakfast room with a lovely connected feel
- Three bedrooms and a family bathroom upstairs
- Solar export tariff in place – earn money back from excess energy generated
- EPC Rating B/87



Total Area: 110.5 m<sup>2</sup> ... 1190 ft<sup>2</sup>

All measurements are approximate and for display purposes only

An extended three bedroom home in a quiet St Ives close – complete with a fully owned solar panel system that keeps energy costs impressively low!