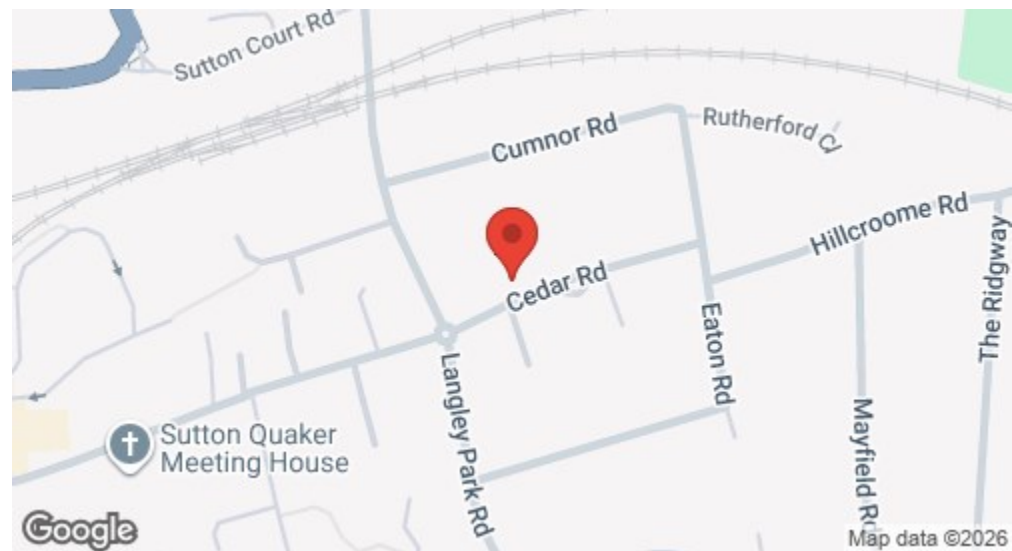


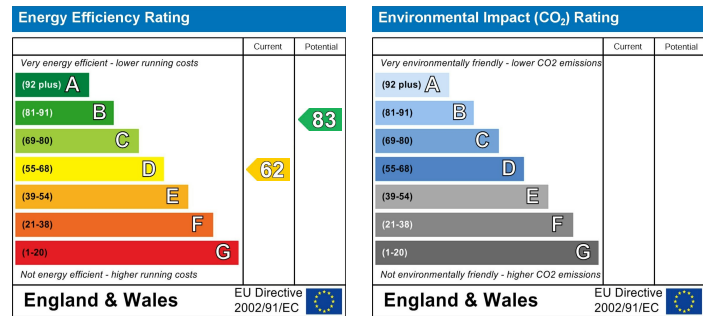
Location



£3,500 Per Month - 10th January 2026  
Cedar Road, Sutton, SM2 5DJ



EPC Graph



Important Note

Centro Residential Sales and Lettings limited have not tested any services, heating system, electrical system, appliances, fixtures and fittings, that may be included in this property and would advise interested parties to satisfy themselves as to their condition or investigating the presence of any deleterious materials.

Viewing: Strictly by appointment through:

CENTRO RESIDENTIAL SALES AND LETTINGS LIMITED

Tel: 020 8401 5000

E-mail: residential@centro.plc.uk

See a selection of our properties at [www.centro.plc.uk](http://www.centro.plc.uk)

Description

- Semi-Detached
- Five Bedrooms
- Two Bathrooms
- Modern Kitchen
- Driveway Parking
- Great Location
- Lovely Garden
- Council Tax Band F
- EPC Rating D

Features

- Gas Central Heating
- Double Glazing
- Excellent Finish

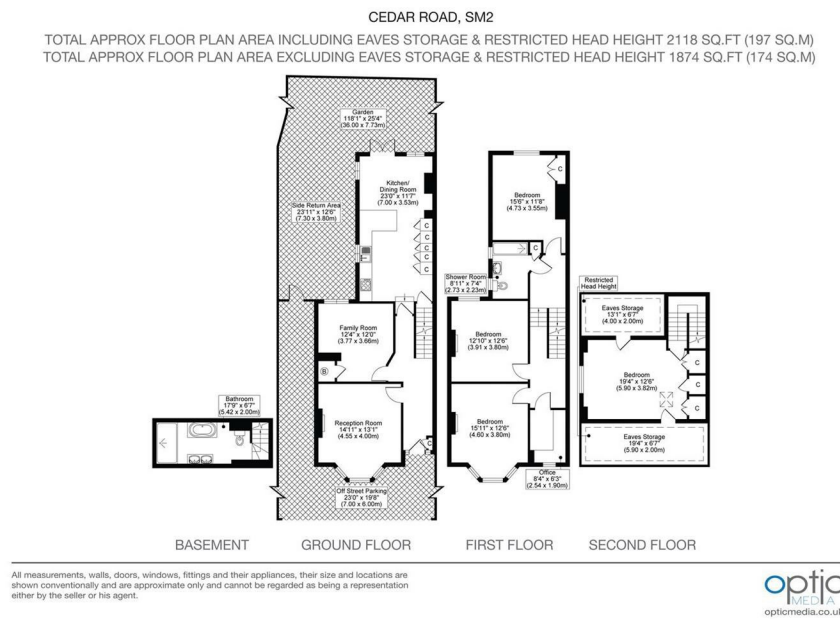
What you need to know

- Term: 12 months
- Rent: £3500pcm exclusive of bills
- Security deposit: £4038.00
- Council Tax Band F
- Energy Rating: D





## Floor Plan



For illustration purposes only  
Accommodation



All dimensions and measurements are approximate and for guidance only.

### *Just Centro's Opinion...*

A fantastic Five-bedroom, Two Bathroom Semi-Detached home with Driveway Parking located on the popular Cedar Road in Sutton. This lovely home is full of character and charm and offers you space, style and sophistication.

On the ground floor you have two great sized separate reception rooms, a modern fitted kitchen with built-in appliances and breakfast bar extended with dining area that leads to a private decked and grassed garden. You also have a basement with high-class bathroom with walk-in shower and free-standing bathtub.

On the first floor you have three large double bedrooms, one single bedroom / office and a family bathroom suite.

The loft has been extended to create a spacious master bedroom with built in wardrobes and ample eave storage.

Features include Driveway Parking for Two Cars, Double Glazing, Gas Central Heating and Neutral Decor.

## Additional Photos

