



## Cromwell Road, SW7

£475 Per week

A newly refurbished studio apartment located on the third floor of this well-regarded portered building in South Kensington. The property benefits from convenient access to the main lift, providing easy entry to the lobby and communal areas.

The property is conveniently located near Gloucester Road Underground Station, offering excellent transport connections. It also provides easy access to Knightsbridge and the M4 motorway, facilitating travel to Heathrow Airport and destinations in the West.

### Features

- Studio Room
- Separate Kitchen
- Bathroom
- 24 hour Porters
- Lift
- City Views

# Cromwell Road, London, SW7

Point West,  
Cromwell Road, SW7  
Approx. Gross Internal Area \*  
307 Sq Ft - 28.52 Sq M

301

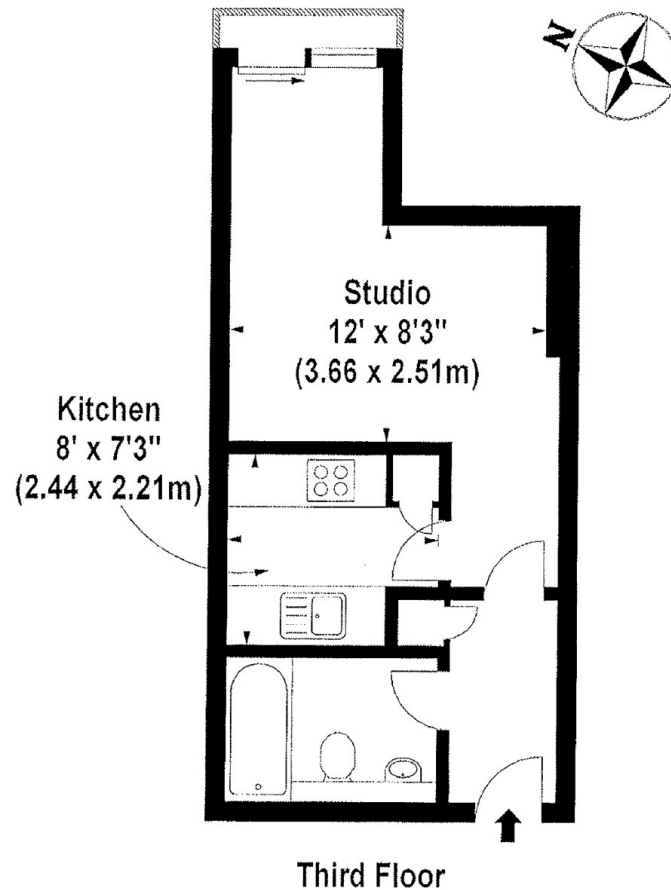


Illustration For Identification Purposes Only. Not To Scale

\*Floorplans Drawn According To RICS Guidelines

Floorplans Supplied By Totalvista

Tel : 07976 232758 / 9 [www.totalvista.co.uk](http://www.totalvista.co.uk)

Copyright Totalvista 2006 (br)

## Dexters

South Kensington  
144 Old Brompton Road  
London  
SW7 4NR  
Lettings  
020 7244 7711

Energy Rating: C. We aim to make our particulars both accurate and reliable. However they are not guaranteed; nor do they form part of an offer or contract. If you require clarification on any points then please contact us, especially if you're traveling some distance to view. Please note that appliances and heating systems have not been tested and therefore no warranties can be given as to their good working order.

 **RICS** | Regulated  
Estate Agent  
and Letting Agent

[dexters.co.uk](http://dexters.co.uk)