



## Kensington Gardens Square, W2

£6,950 Per calendar month

**Dexters**



## Kensington Gardens Square, W2

This sixth-floor apartment in Kensington Gardens Square offers modern luxury and convenience. Featuring two bathrooms, cooling in all zones, and Miele appliances, it ensures comfortable living. The new build includes 24/7 porter service, secure underground parking, and two lifts for easy access. Enjoy the proximity to Hyde Park, just a 7-minute walk away. This apartment combines contemporary amenities with an unbeatable location, making it a perfect urban retreat.

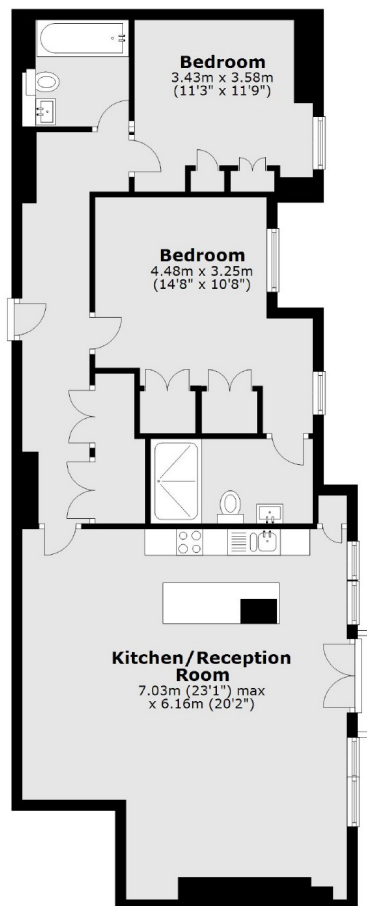
Kensington Gardens Square and Westbourne Grove are prestigious areas offering a blend of elegance and convenience. With excellent transport links, including Bayswater and Queensway stations, residents enjoy easy access to the rest of London. The area boasts upmarket landmarks, boutique shops, gourmet restaurants, and proximity to Hyde Park and Kensington Gardens.

### Features

- Two Bedrooms
- Two Bathrooms
- Porter
- Cooling in all zones
- Underground Parking
- Elevator Access



# Kensington Gardens Square, London, W2



## Sixth Floor

Total area: approx. 92.0 sq. metres (990.1 sq. feet)