



## Loveridge Road, NW6

£499,950

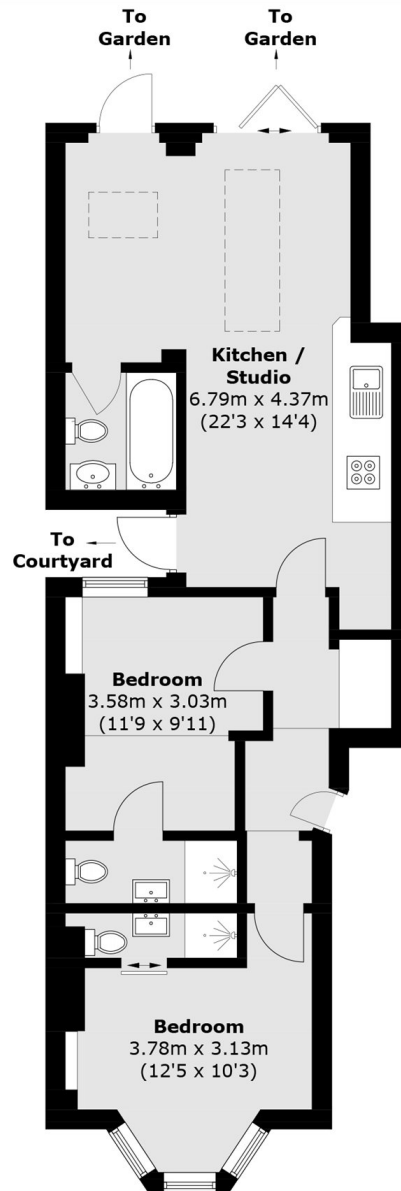
This two double bedroom and three bathroom garden flat is conveniently located for the shops and amenities of West End Lane. The property offers a private south facing garden and will be sold with no onward chain.

West Hampstead stations (Thameslink, Jubilee line and overground lines) are a short walk away. This property is conveniently located for the multiple shops, restaurants and amenities of both West Hampstead and Kilburn.

### Features

- Private South Facing Garden
- Two Double Bedrooms
- Three Bathrooms
- Period Conversions
- No Onward Chain
- Share Of Freehold

# Loveridge Road, London, NW6



## Ground Floor

Total area (approx.): 64.4 sq. m (693.2 sq. ft)