



MERTHYR TERRACE, SW13

£1,785,000

Victorian freehold house
Four bedrooms
Open plan kitchen and living room
Immaculate condition
Landscaped garden
Barnes

@marshandparsons
marshandparsons.co.uk

MARSH &
PARSONS



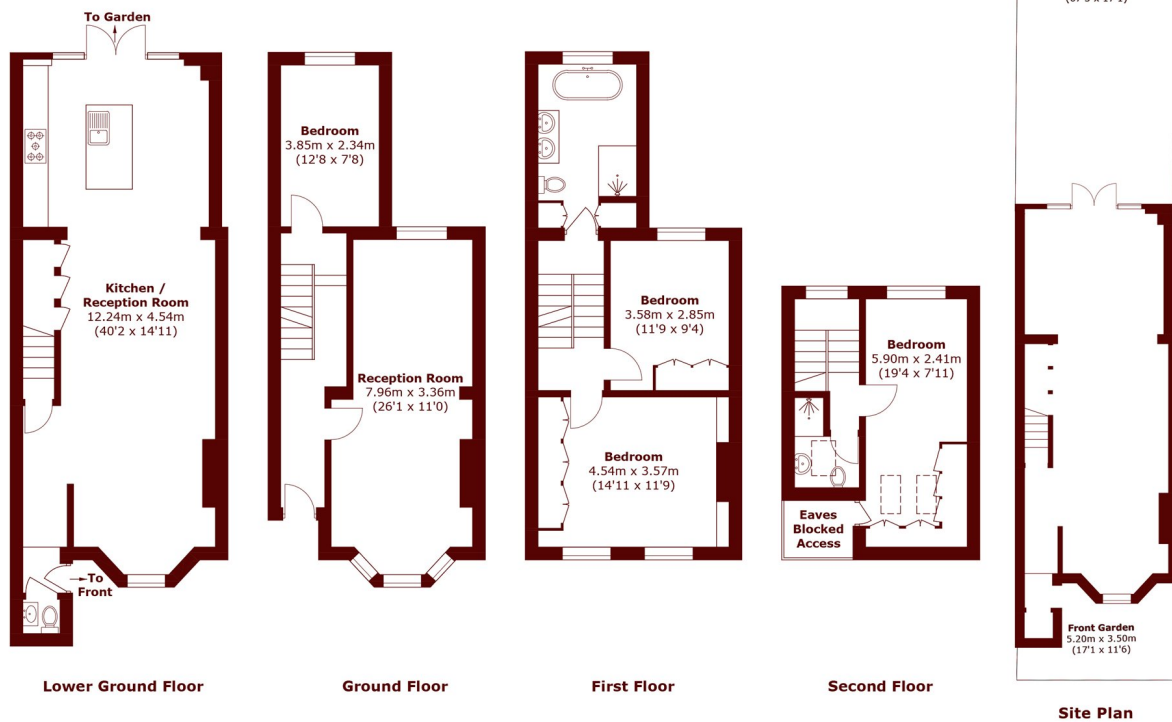
ABOUT THE PROPERTY

Marsh & Parsons are delighted to bring this beautiful family four bedroom terraced house on Merthyr Terrace to the market. The house is located in a quiet residential cul-de-sac located moments from Hammersmith Bridge, the Thames Tow Path and a selection of local shops and cafes.

This house is arranged over four floors and provides four double bedrooms. The extensive living accommodation includes an elegant formal reception along with a spectacular 40 ft open plan kitchen, dining and living area that leads on to a private landscaped garden. This spacious house has been finished to a meticulous standard and combines modern features whilst retaining period



STEP INSIDE MERTHYR TERRACE



Total area (approx.): 163.0 sq. m (1,754.5 sq. ft)
(Excluding Eaves)

Barnes & East Sheen
020 8563 8333

Energy Rating: C We aim to make our particulars both accurate and reliable. However, they are not guaranteed; nor do they form part of an offer or contract. If you require clarification on any points then please contact us, especially if you're traveling some distance to view. Please note that appliances and heating systems have not been tested and therefore no warranties can be given as to their good working order

**MARSH &
PARSONS**