



Meridian Place, E14

£576 Per week

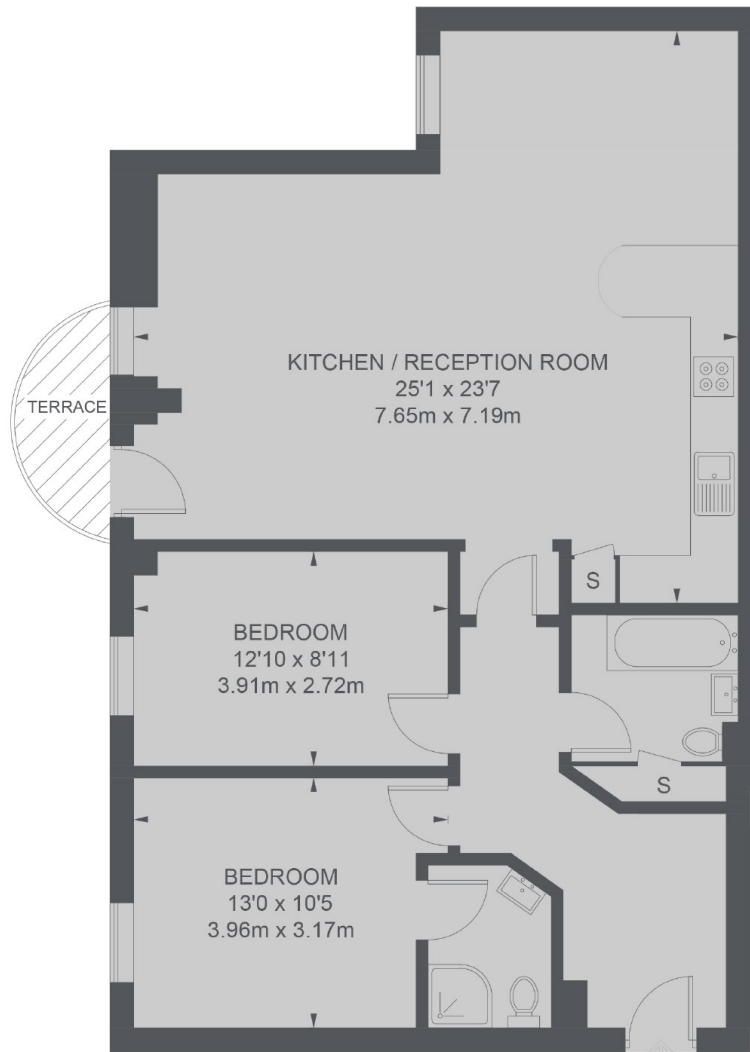
An exceptionally large two bedroom apartment on the second floor of this portered development. This apartment has an open plan reception room, a private balcony and dock views.

Meridian Place is moments away from the bars and restaurants of South Quay, including the popular Lotus Floating Restaurant.

Features

- Two Bedrooms
- Two Bathrooms
- Open Plan Reception
- Wooden Flooring
- Dock Views
- Private Balcony

Meridian Place, London, E14



SECOND FLOOR

TOTAL APPROX. FLOOR AREA 949 SQ. FT. (88.2 SQ. M.)