

LEASEHOLD - SHARE OF
FREEHOLD



Flat - Ground Floor

FLAT 3 ODETTE COURT, 1059 HIGH ROAD, LONDON, N20 0QB

Asking Price

£440,000

FEATURES

- Gated Development and Secure Entry System
- Chain Free
- Ground Floor with direct access to Communal Gardens
- 2 Double Bedrooms
- 2 Bathrooms
- Allocated Residents Parking and Visitors Parking



RASH & RASH

2 Bedroom Flat - Ground Floor located in London

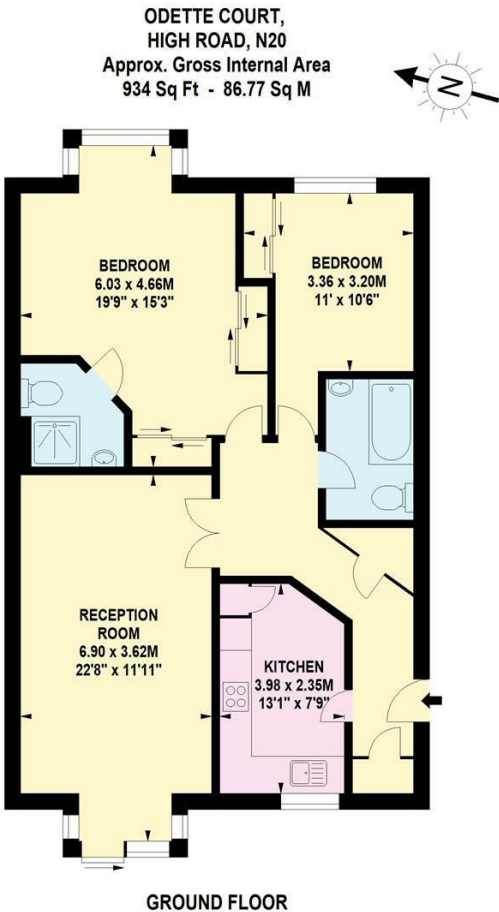
Located just moments from the vibrant Totteridge & Whetstone High Road, this nicely presented two double bedroom, two bathroom ground floor apartment offers spacious, secure and highly convenient living within a sought-after gated development.

Extending to approximately 934 sq ft (86.77 sq m), the property features a generous reception room with direct access to the communal gardens, a rare advantage that creates a wonderful sense of space and indoor-outdoor living. The separate kitchen is well proportioned and thoughtfully laid out, offering ample storage and worktop space.

There are two excellent double bedrooms, including a principal bedroom with en-suite shower room, alongside a modern family bathroom.

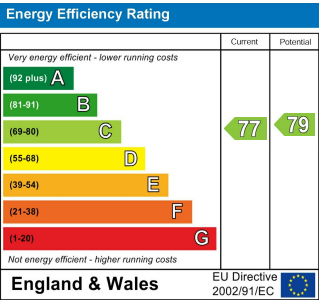
Residents benefit from secure entry, lift access within the building, allocated gated parking, additional visitor parking, and neatly maintained communal grounds.

Perfectly positioned close to a wide array of shops, cafés and restaurants on the High Road, as well as excellent transport links and nearby green spaces including Swan Lane Park, this property



Call us on
02088822828
info@rashandrash.com
<https://www.rashandrash.com/>

Council Tax Band
F



Agents Note: Whilst every care has been taken to prepare these particulars, they are for guidance purposes only. All measurements are approximate and are for general guidance purposes only and whilst every care has been taken to ensure their accuracy, they should not be relied upon and potential buyers are advised to recheck the measurements.

