



Portland Place, King's Lynn, PE30 5NA

welcome to

Portland Place, King's Lynn

Ideal first time buy or investment opportunity with this beautifully presented two bedroom mid terrace house located within easy reach of local amenities and is being offered with no onward chain. New EPC report available: Rating D. Viewing highly recommended.



Double Glazed Entrance Door

Lounge/ Diner

22' 5" x 13' 1" max (6.83m x 3.99m max)

Double glazed window, wood effect laminate floor, meter cupboard, marble fireplace with inset electric fire, electric radiator, double glazed door to rear, stairs to first floor

Kitchen

11' 11" x 6' 11" (3.63m x 2.11m)

Range of base and wall units, roll edge work top, inset sink with mixer tap over, built-in oven, electric hob, extractor over, integrated fridge/freezer, space for washing machine, double glazed window, wood effect laminate floor

Rear Lobby

Double glazed door to rear

Shower Room

Large walk-in shower cubicle, low level WC, wash hand basin, double glazed window

First Floor Landing

Loft access

Bedroom One

13' 3" x 10' 3" (4.04m x 3.12m)

Double glazed window, electric radiator

Bedroom Two

11' 8" x 10' (3.56m x 3.05m)

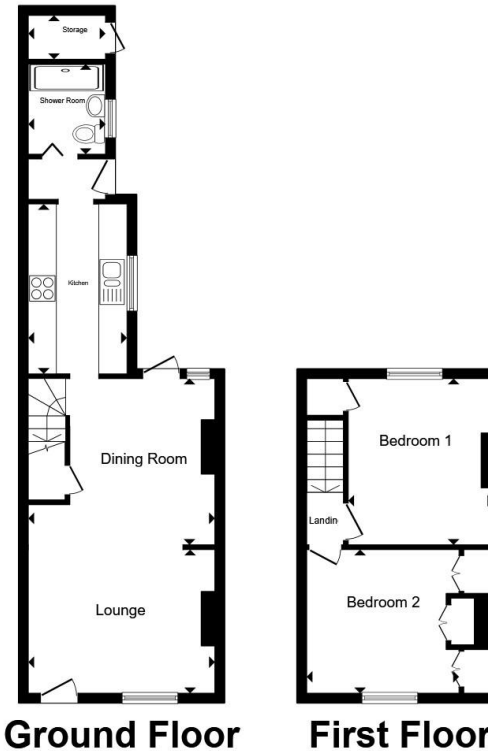
Double glazed window, storage cupboard, electric radiator

Outside

Rear courtyard with access gate

Agents Note

The Land Registry title has yet to be updated with the Vendor's details. Please ask the branch for more details.



Ground Floor

First Floor

Total floor area 68.2 m² (734 sq.ft.) approx

This floor plan is for illustrative purposes only. It is not drawn to scale. Any measurements, floor areas (including any total floor area), openings and orientation are approximate. No details are guaranteed, they cannot be relied upon for any purpose and they do not form part of any agreement. No liability is taken for any error, omission or misstatement. A party must rely upon its own inspection(s). Powered by www.propertybox.io



welcome to

Portland Place, King's Lynn

- Ideal First Time Buy or Investment Opportunity
- Extensively Refurbished
- Mid Terrace House
- 22ft Lounge/Diner
- Ground Floor Shower Room

Tenure: Freehold EPC Rating: D
Council Tax Band: A

offers over

£155,000



Please note the marker reflects the
postcode not the actual property

view this property online [williamhbrown.co.uk/Property/KLN119587](https://www.williamhbrown.co.uk/Property/KLN119587)



Property Ref:
KLN119587 - 0005

1. MONEY LAUNDERING REGULATIONS Intending purchasers will be asked to produce identification documentation at a later stage and we would ask for your co-operation in order that there is no delay in agreeing the sale. 2. These particulars do not constitute part or all of an offer or contract. 3. The measurements indicated are supplied for guidance only and as such must be considered incorrect. Potential buyers are advised to recheck measurements before committing to any expense. 4. We have not tested any apparatus, equipment, fixtures or services and it is in the buyers interest to check the working condition of any appliances. 5. Where an EPC, or a Home Report (Scotland only) is held for this property, it is available for inspection at the branch by appointment. If you require a printed version of a Home Report, you will need to pay a reasonable production charge reflecting printing and other costs. 6. We are not able to offer an opinion either written or verbal on the content of these reports and this must be obtained from your legal representative. 7. Whilst we take care in preparing these reports, a buyer should ensure that his/her legal representative confirms as soon as possible all matters relating to title including the extent and boundaries of the property and other important matters before exchange of contracts.

William H Brown is a trading name of Sequence (UK) Limited which is registered in England and Wales under company number 4268443, Registered Office is Cumbria House, 16-20 Hockliffe Street, Leighton Buzzard, Bedfordshire, LU7 1GN. VAT Registration Number is 500 2481 05.



william h brown



01553 771337



KingsLynn@williamhbrown.co.uk



40-42 King Street, KING'S LYNN, Norfolk, PE30 1ES



[williamhbrown.co.uk](https://www.williamhbrown.co.uk)