



METROPOLITAN CRESCENT, SW4

£3,350 pcm

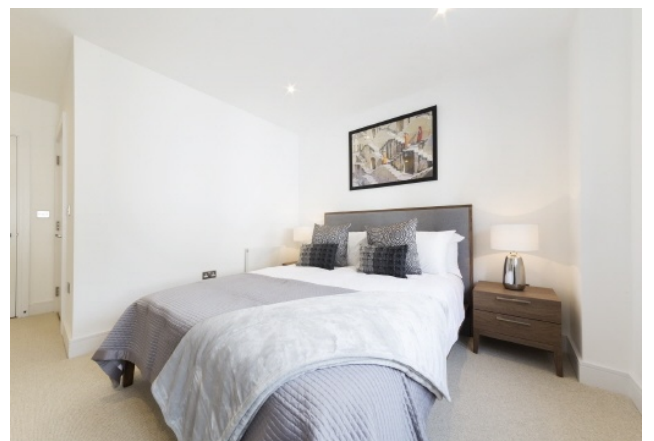
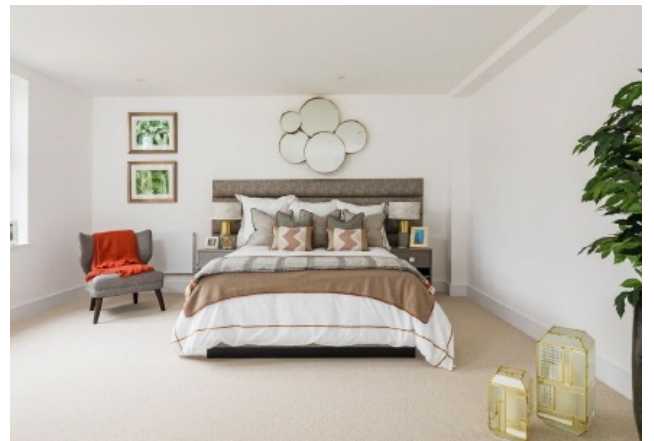
Well presented two bed, two bath apartment in a gated Clapham conservation development. The property offers an open plan living and dining room, two en-suite doubles, and ample storage. It further benefits from a private patio garden and bike storage.

- Open Kitchen and Reception
- Integrated Kitchen
- Modern Bathroom Suites
- Secure Gated Development
- Private Patio Garden
- Bike Storage

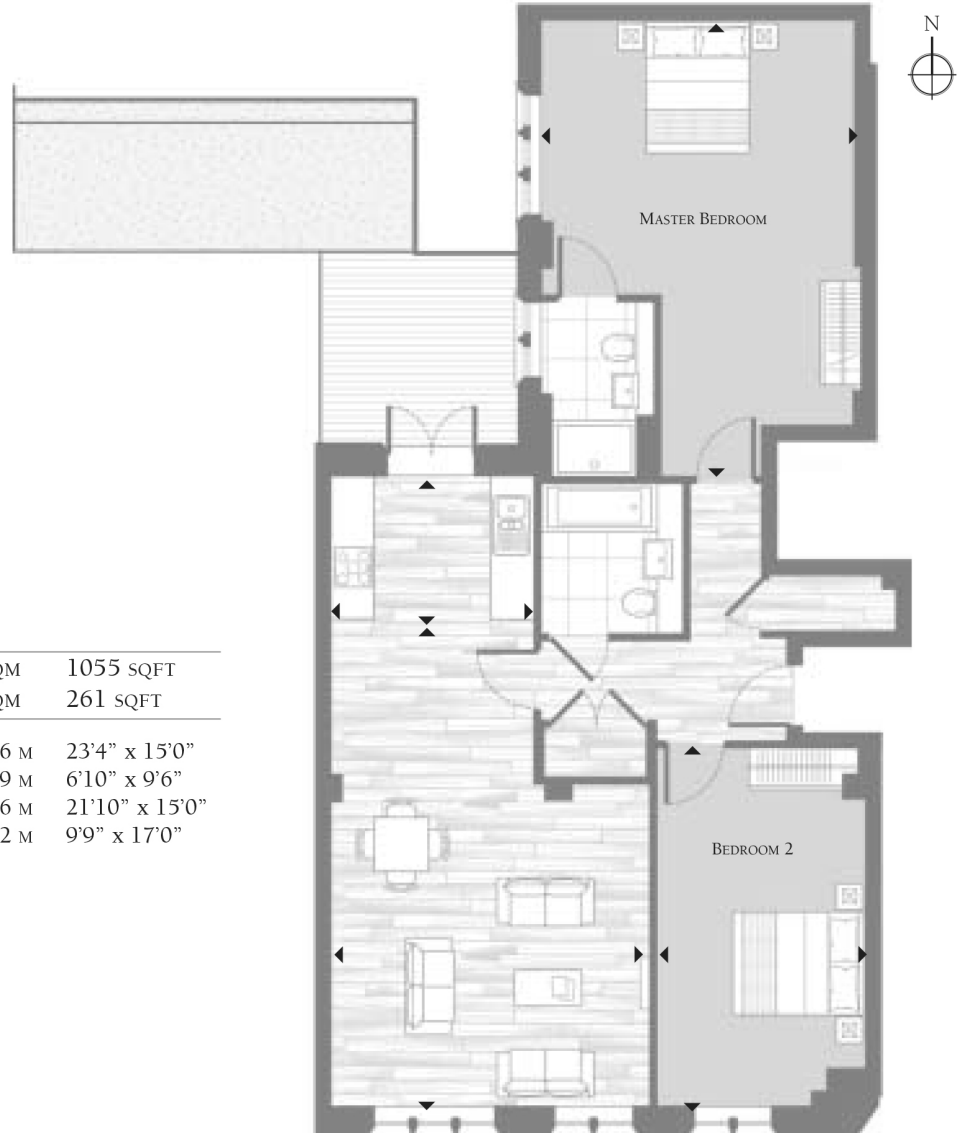


ABOUT THE HOME

Situated on Metropolitan Crescent in the heart of Clapham, you're moments from Abbeville Road's boutique shops & eateries, the green expanse of Clapham Common, and excellent transport links to Clapham Common, Clapham North & Brixton stations.







INTERNAL AREA	98.0 SQM	1055 SQFT
EXTERNAL AREA	24.3 SQM	261 SQFT
LIVING/DINING	7.1 x 4.6 M	23'4" x 15'0"
KITCHEN AREA	2.1 x 2.9 M	6'10" x 9'6"
MASTER BEDROOM	6.7 x 4.6 M	21'10" x 15'0"
BEDROOM 2	3.0 x 5.2 M	9'9" x 17'0"

LiFE RESIDENTIAL

11 Flagstaff House, London,
SW8 2LZ

Sales: 020 7476 1408

Lettings: 020 7582 7989

Energy Rating: B. We aim to make our particulars both accurate and reliable. However they are not guaranteed; nor do they form part of an offer or contract. If you require clarification on any points then please contact us, especially if you're traveling some distance to view. Please note that appliances and heating systems have not been tested and therefore no warranties can be given as to their good working order.