



1, Danestream, Shorefield Country Park,  
Dunfermline, Fife, KY11 1JH

£72,000

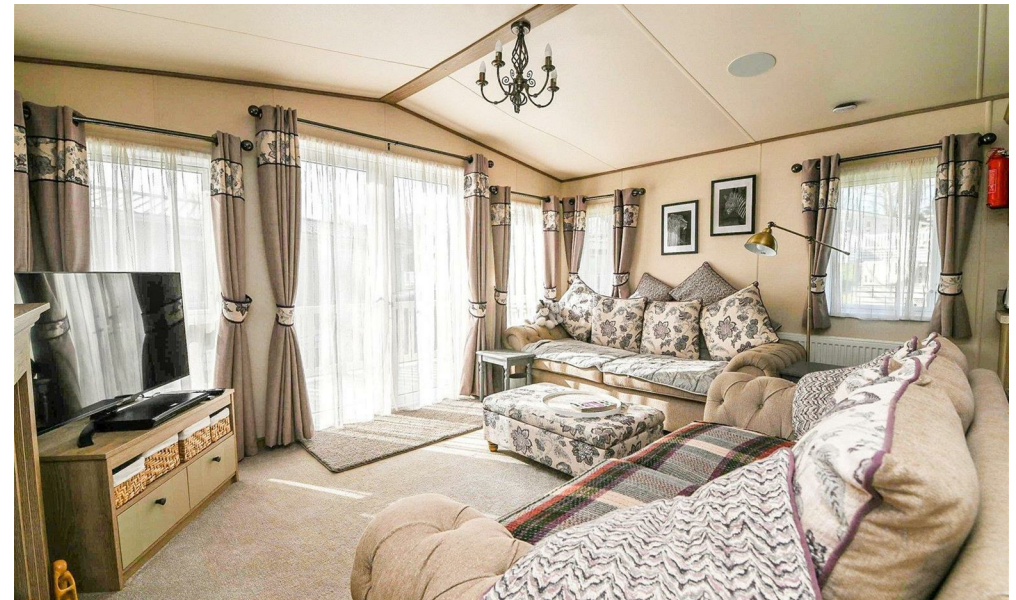
**Mitchells**  
1963 — TODAY



*1 Danestream  
Shorefield Country Park  
Downton  
Hampshire  
SO41 0LH*

An exciting opportunity to purchase this ABI Beaumont, situated in a quiet cul-de-sac of just seven units on the popular Shorefield Country Park. The holiday home features a spacious decking area overlooking a nearby stream, with other highlights including a large open plan kitchen/living area, two good sized bedrooms with bedroom one benefiting from a walk-in wardrobe and en-suite bathroom, a shower room, two parking spaces, and a long remaining licence.

- 2017 ABI Beaumont 42x14
- 2026 Site Fees: £7,694.68
- 2026 Rates: £930.32
- License Ends 31/10/2039
- Second Home, Cannot Be Main Residence
- Open Plan Kitchen/Living Area
- Bedroom One With En-Suite Bathroom
- Second Twin Bedroom
- Family Shower Room
- Large Decking & Parking



## The Property

Entrance into the kitchen/dining area with tile effect flooring, a pleasant double aspect, and a good range of shaker style wall and base units with a marble effect worktop. There is a one and a half bowl sink unit with a mixer tap and drainer, a five burner gas hob with an extractor fan above, and an under counter oven. It also includes a four seater dining table and chairs, along with integrated appliances such as a dishwasher, an eye level microwave, a fridge/freezer, and a washing machine.

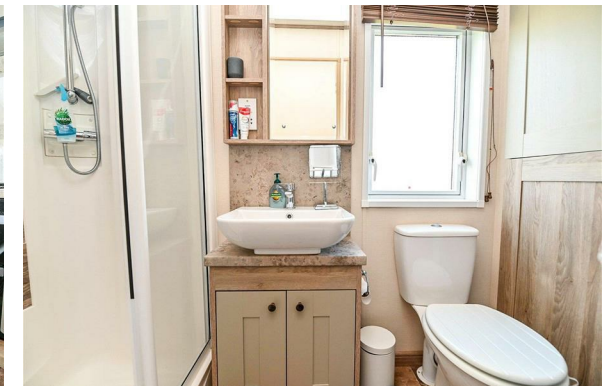
The sitting room has double casement doors opening onto the decking, two large sofas with one being a sofa bed making the holiday home sleep six, and a feature fireplace with an electric fire.

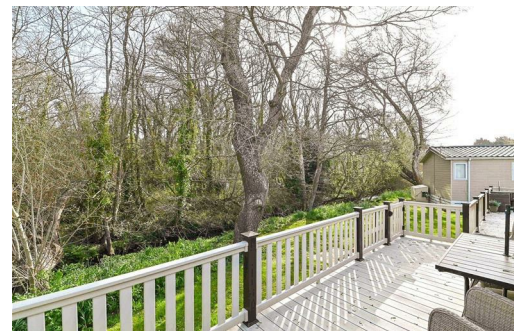
The shower room includes a UPVC double glazed window, an extractor fan, a cupboard housing the central heating boiler, useful shelving, and a suite comprising a WC, a ladder style heated towel rail, a wash hand basin with a mixer tap over and storage beneath, and a large shower cubicle with sliding doors.

Bedroom one is a large king sized room with an excellent range of furniture, including matching bedside cabinets, wall hung storage, and a dressing table with drawers. A door leads through to the walk-in wardrobe, which has wardrobes and shelving, before another door leads to the en-suite bathroom.

The en-suite bathroom has tile effect flooring, an extractor fan, a UPVC double glazed window, and a suite comprising a panel bath with mixer tap and glass shower screen, a wash hand basin with a mixer tap over and storage beneath, a WC, and a chrome ladder style heated towel rail.

Bedroom two is a generous twin room with two single beds, fitted furniture including a dressing table, wall hung storage, a single wardrobe, and a bedside table.





## *Gardens & Grounds*

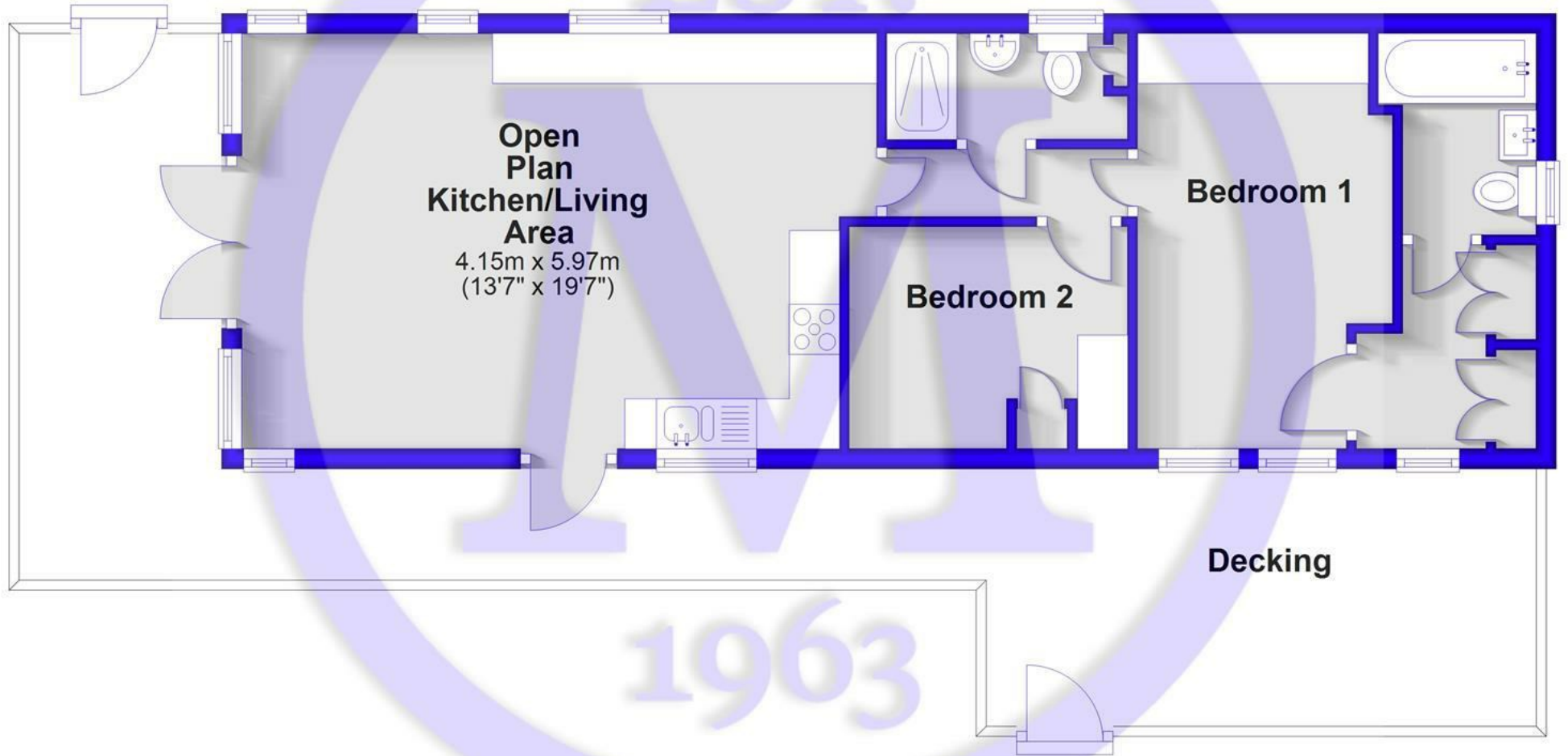
1 Danestream is situated within a quiet cul-de-sac of just seven holiday homes. This lodge enjoys a spacious decking area overlooking a nearby stream, offering an excellent degree of privacy and seclusion. The holiday home is only a short walk from the facilities at Shorefield and also benefits from a parking bay large enough for two vehicles.

## *Site Fees & Charges*

Annual Site Fee:  
Rates:  
Licence Valid Until:

## Floor Plan

Approx. 53.0 sq. metres (571.0 sq. feet)  
(excluding Decking)

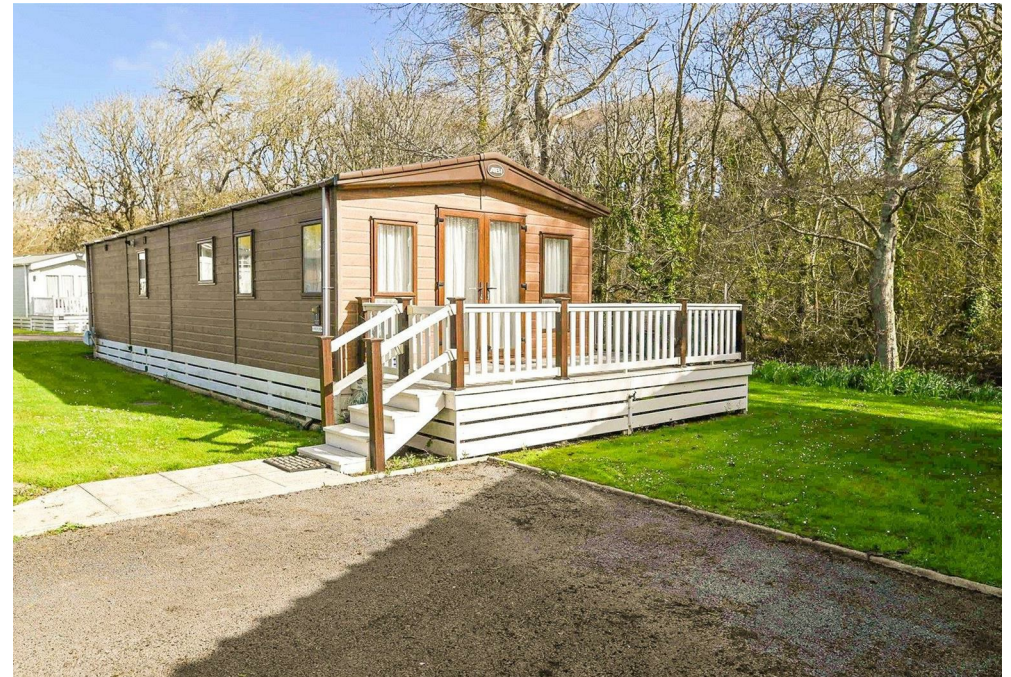


Total area: approx. 53.0 sq. metres (571.0 sq. feet)

## Situation

Located on the southern edge of the New Forest National Park and just a short stroll from the shingle beaches of Milford on Sea, the award-winning Shorefield Country Park offers an idyllic spot for the ultimate getaway. The park boasts a wide range of excellent facilities, including heated indoor and outdoor pools, a gym and day spa, bars, a restaurant, a fishing lake, pet-friendly areas, play areas, tennis courts, and live family entertainment.

At Shorefield Country Park, site fees run from November to October, while the rates are charged from April to March. These fees can be paid either over six or twelve months. Gas and electricity are metered, with bills issued in May and November. The park is open from 10th February to 5th January, providing a fantastic year-round retreat.





[Mitchells.uk.com](http://Mitchells.uk.com)  
[info@mitchells.uk.com](mailto:info@mitchells.uk.com)  
01425 616411

Centenary Buildings  
8-10 Old Milton Road  
New Milton  
Hampshire  
BH25 6DT

**Mitchells**  
1963 — TODAY

