



Merstow Green, Evesham, WR11 4BD

**SHELDON  
BOSLEY  
KNIGHT**

LAND AND  
PROPERTY  
PROFESSIONALS

# Property Description

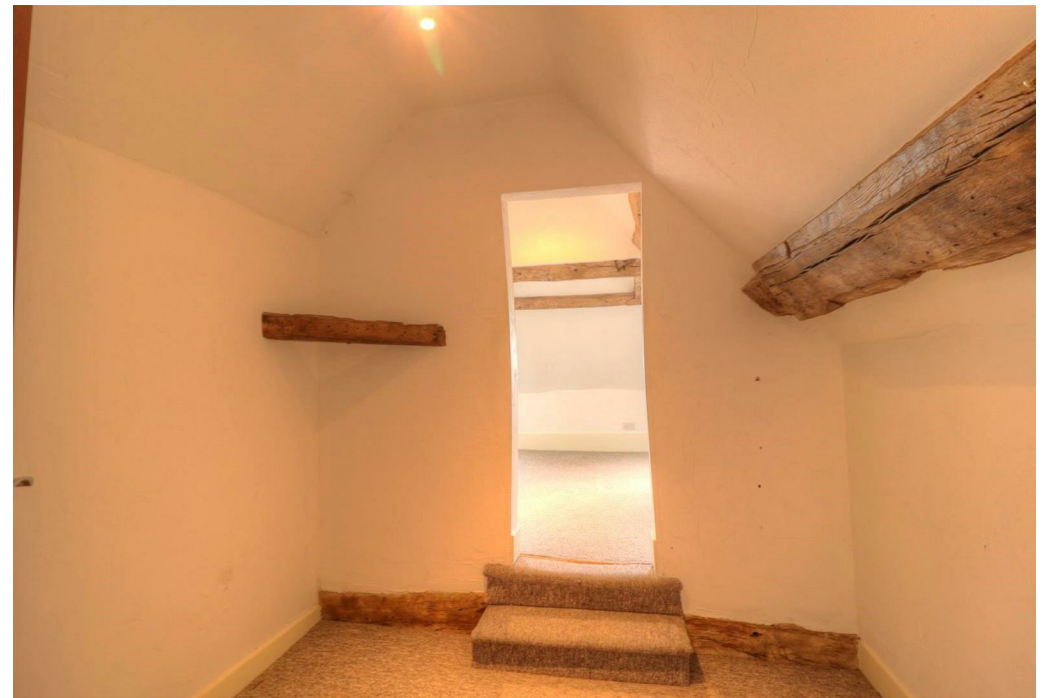
\*\*\* AVAILABLE MID JULY \*\*\*

Sheldon Bosley Knight are pleased to present this character-filled studio flat, ideally located in the heart of Evesham, within easy reach of local shops, cafés, pubs, and excellent road and rail links.

The accommodation comprises a kitchen fitted with a range of units and white goods, with a staircase leading to the hallway. From here, there is access to the open-plan living/bedroom area, which features beautiful exposed wooden beams, and a shower room with WC and wash hand basin.

Council Tax Band: A | EPC Rating: E | Offered Unfurnished





## Key Features

- AVAILABLE MID SEPTEMBER
- DEPOSIT ALTERNATIVE AVAILABLE
- Evesham
- Studio
- Apartment
- Unfurnished
- Close to Local Amenities
- Council Tax Band A
- Energy Rating E
- Periodic Tenancy

**£695 PCM**