



North End Crescent, W14

£2,600 Per calendar month

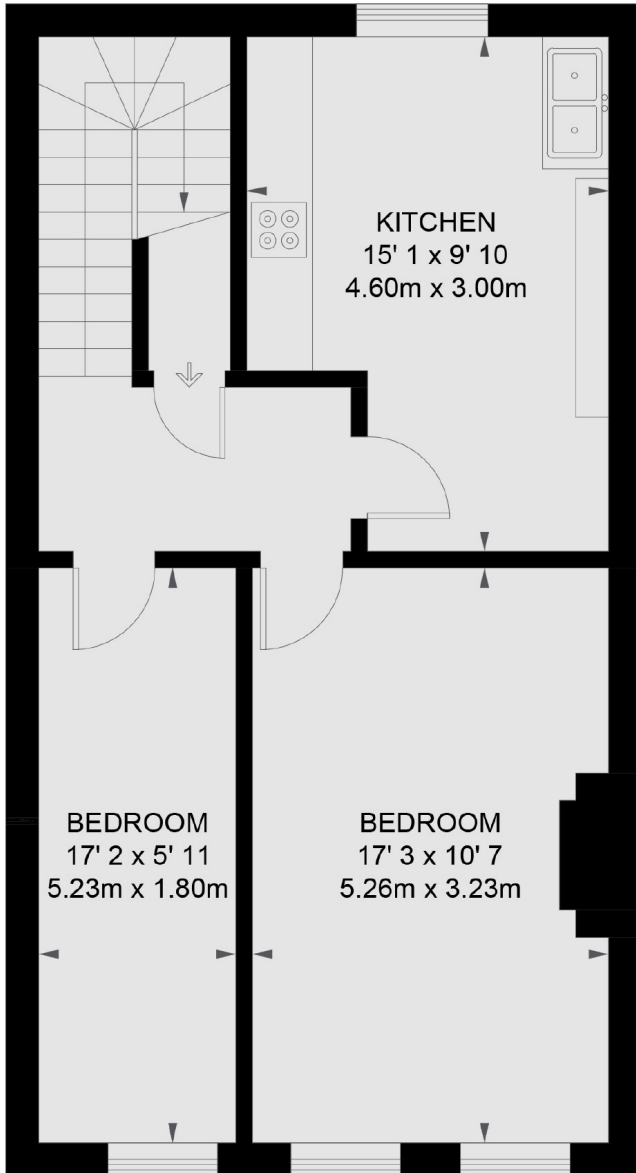
A fantastic two double bedroom apartment located in this Victorian conversion building in central West Kensington. The property is over 100 Sqm, split level and has wooden floors throughout.

North End Crescent is located north of the A4 within 500 yards to West Kensington and Olympia station, and a short walk to Kensington High Street with its numerous shops, bars, restaurants and open spaces.

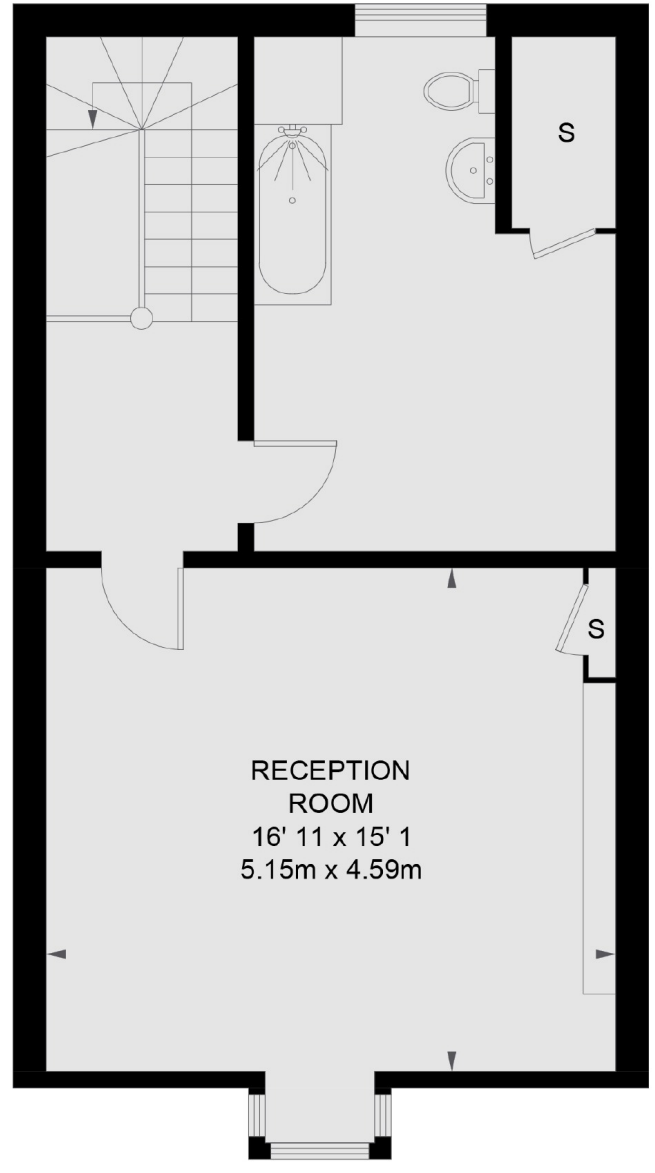
Features

- Two Bedrooms
- Top Floor
- Close To Tube
- Split Level
- One Bathroom
- Eat In Kitchen

North End Crescent, London, W14



FIRST FLOOR



SECOND FLOOR

TOTAL APPROX. FLOOR AREA 1117 SQ. FT. (103.8 SQ. M.)