



# Gordon Mansions

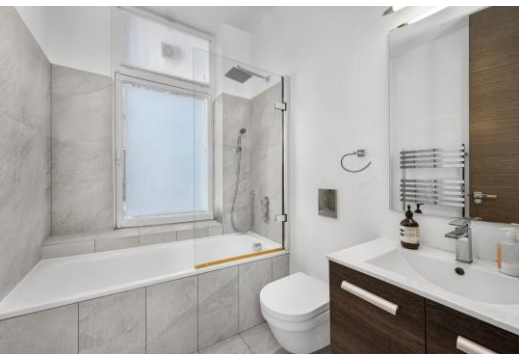
Torrington Place, WC1E

Asking Price £1,850,000

Stunning 5th floor lateral apartment (1,720 sq ft) in historic Gordon Mansions. Impressive 4-bedroom flat with period features in prime Bloomsbury location, near transports links and University.

CHESTERTONS





# Gordon Mansions

Torrington Place, WC1E

- Upper Floor
- Lift
- Access to West End & City
- Transports Links



Positioned on the fifth floor of the prestigious Gordon Mansions, this impressive 1,720 sq ft lateral apartment offers a rare opportunity in the heart of Bloomsbury. The red-brick Edwardian mansion block, with its distinctive period architecture, provides a striking home moments from the British Museum and University College London.

The property boasts four generously proportioned bedrooms, high ceilings, and elegant period features throughout, complemented by contemporary fixtures. Residents enjoy a well-maintained communal entrance with lift access, and the exclusivity of one of Central London's most desirable addresses.

**Tenure:** Leasehold 98 years 2 months

**Service Charge:** £4300

**Ground Rent:** £10

**Local Authority:** Camden

**Council Tax Band:** G

Energy Efficiency Rating		
	Current	Potential
Very energy efficient - lower running costs		
A (94-100)		
B (81-93)		82
C (69-80)	70	
D (55-68)		
E (39-54)		
F (21-38)		
Not energy efficient - higher running costs		
G (1-20)		
England, Scotland & Wales EU Directive 2002/91/EC		

### Chestertons Covent Garden Sales

196 Shaftesbury Avenue

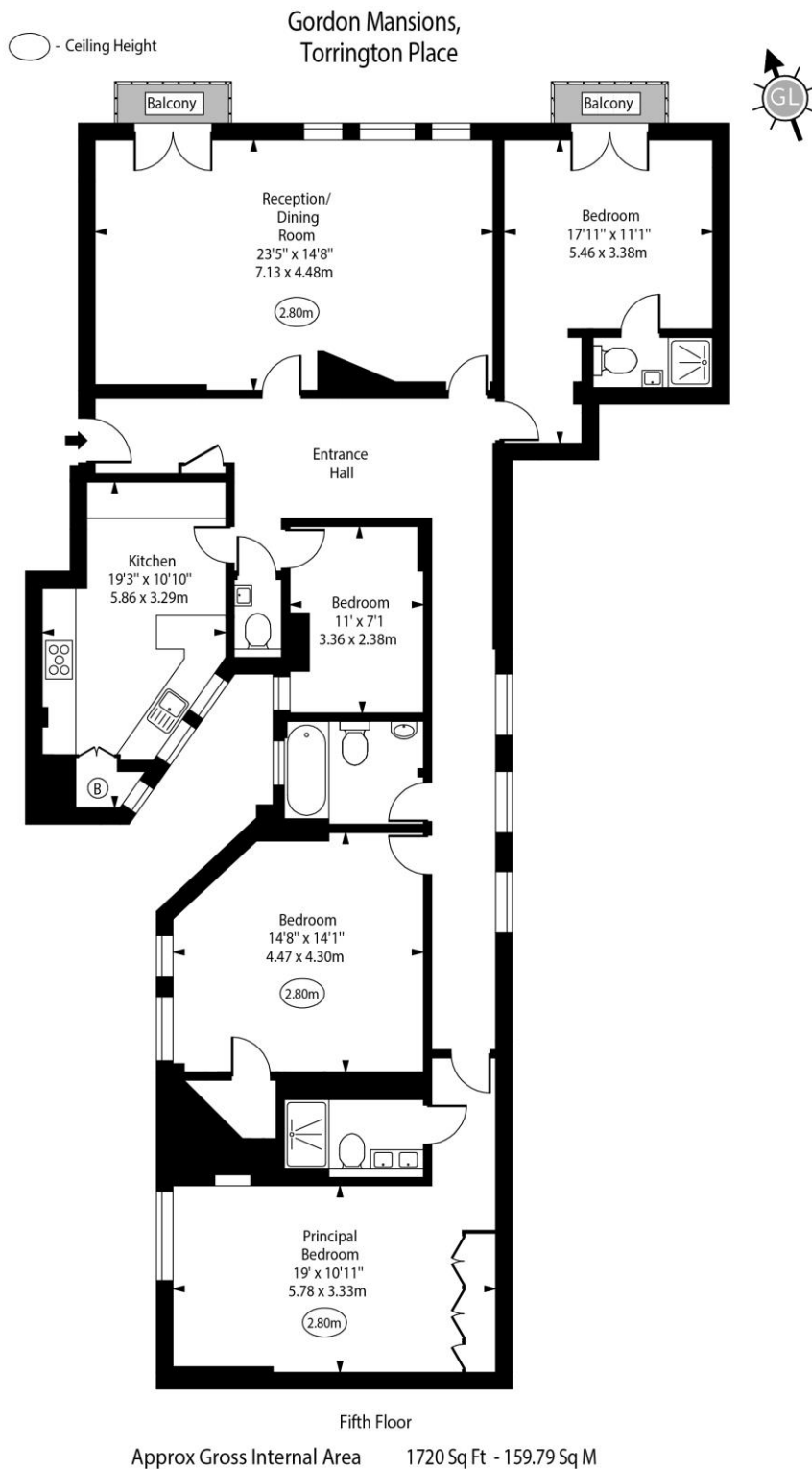
London

WC2H 8JF

coventgarden@chestertons.co.uk

020 3040 8300

chestertons.co.uk



For Illustration Purposes Only - Not To Scale  
[www.goldlens.co.uk](http://www.goldlens.co.uk)  
 Ref. No. 027341J