



## Twickenham Road, TW7

£625,000

This exceptional three bedroom ground floor apartment is set within a prestigious gated development and has been finished to a high standard throughout. Offering in excess of 1,200 sq ft of living space, the property boasts high ceilings, beautiful original features and an abundance of natural light throughout.

Holme Court is located on Twickenham Road in a secure gated development near Redlees Park and opposite the local leisure centre with tennis courts. It also offers easy access to Isleworth, Twickenham and Richmond.

### Features

- Three Bedrooms
- Two Bathrooms
- Allocated Parking
- Gated Development
- Ground Floor
- Fantastic Location



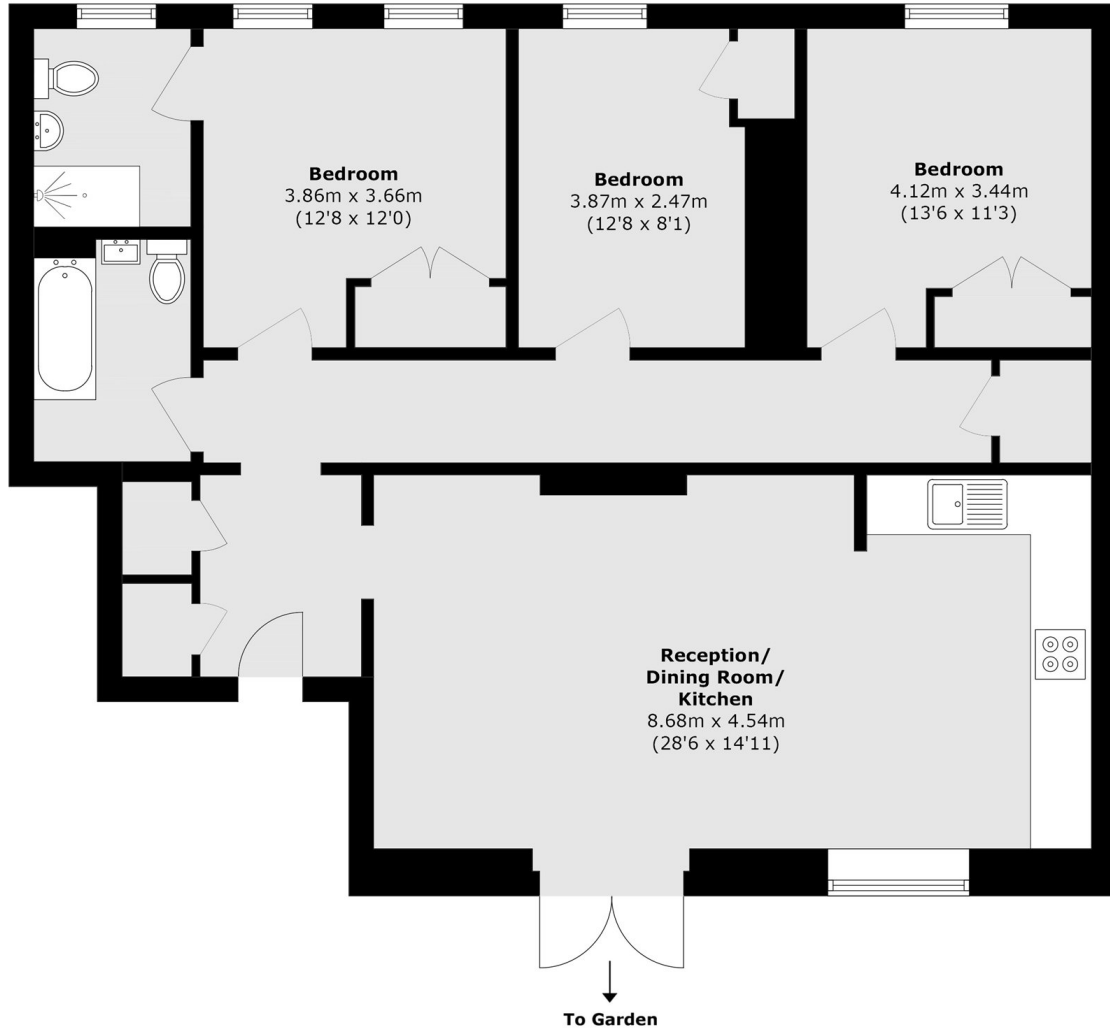
## Twickenham Road, TW7

Positioned within an impressive period building once lived in by Vincent Van Gogh, this unique conversion flat combines character with contemporary living. The property features a spacious open plan reception room and kitchen with a striking feature fireplace, creating an ideal space for both relaxing and entertaining.

Further benefits include a large private entrance hall, well proportioned bedrooms and allocated off street parking. A rare opportunity to acquire a one of a kind home in a highly sought after setting.



# Twickenham Road, Old Isleworth, TW7



Total area (approx.): 116.0 sq. m (1248.6 sq. ft)