



Alie Street, London E1
Price £760 per week - Furnished







Description

Set on the 5th floor, and extending to an impressive 663 sq ft of well-proportioned living space throughout, the property offers a large open-plan style reception room and floor to ceiling windows. A good-sized bedroom suite offers a range of built-in wardrobes and storage, whilst a family bathroom and storage cupboard are located off a welcoming hallway.

Meranti House forms part of the famed Goodman Fields development, offering a host on-site amenities including, swimming pool, spa, gym & leisure facilities, and 24hour concierge.

Ideally located between the City and The River Thames, the development is in the heart of Aldgate, close to an array of transport links and withing walking distance of Spitalfields.

We understand that cooling / heating is delivered via a communal system for which separate charges apply.

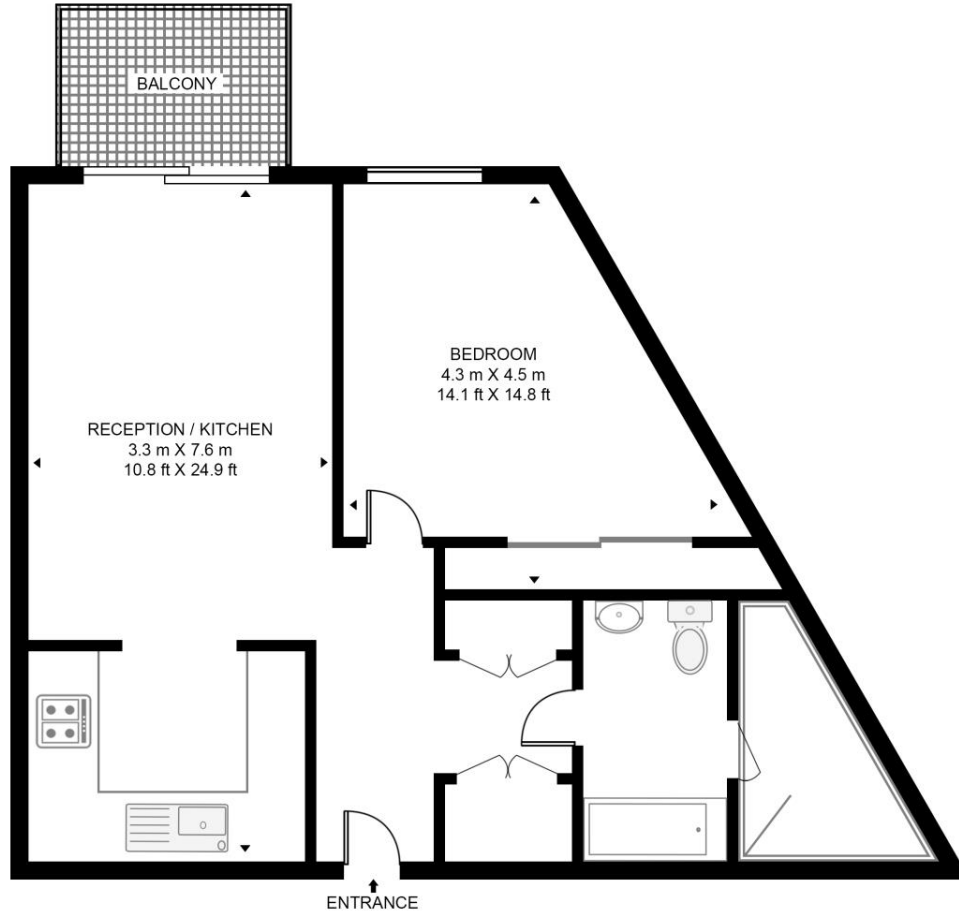
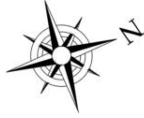
Council tax band: E. Rent is payable on a monthly basis, and you may be required to pay more than a month's rent in advance for tenancies with annual rents exceeding £100,000. You will be required to pay a 1 week holding deposit following a successful offer. Tenancies with annual rents up to £50,000 will require a 5 weeks' security deposit, while those exceeding this threshold will require a 6 weeks' deposit. Utility bills, council tax, telephone line and broadband are not included in the rent. As well as paying the rent, you may also be required to make some additional permitted payments. If your tenancy does not qualify as an APT, additional fees may apply. Please visit jll.co.uk/fees for details of fees that may be payable when renting a property. To check broadband and mobile phone coverage please visit Ofcom here ofcom.org.uk/phones-telecoms-and-internet/advice-for-consumers/advice/ofcom-checker

- One bedroom apartment
- 663 sq ft (58.8 sq m)
- 5th floor
- Luxury development
- On-site gym, leisure & spa facilities
- Communal Swimming pool
- 24hour concierge
- Located in the heart of Aldgate
- Close to transport links and Spitalfields
- Council tax band: E

Floorplan

663 sq ft | 62 sq m

MERANTI HOUSE, GOODMAN'S FIELD
APPROXIMATE GROSS INTERNAL FLOOR AREA 633 SQ.FT (58.8 SQ.M)



FIFTH FLOOR



HDVA

This floor plan has been defined by the RICS Code of Measurement. This floor plan and all others are for approximate representative purposes only and upon usage is agreed to as such by the client.

WWW: hdvirtualart.com | TEL: 0203.974.1567 | EMAIL: info@hdvirtualart.com

City
25 Walbrook The Walbrook
Building,
London EC4N 8AF
+4420 7337 4000

Urban living, your way.

jll.co.uk/residential

© 2019 Jones Lang LaSalle IP, Inc. All rights reserved. All information contained herein is from sources deemed reliable; however, no representation or warranty is made to the accuracy thereof.

