



Kings Road, SW10

£650,000

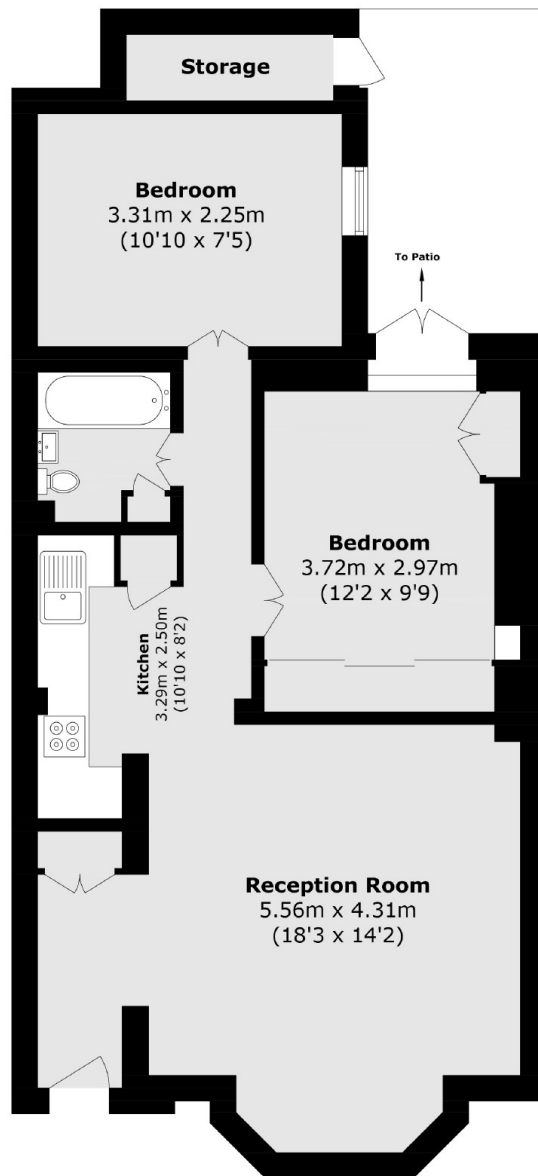
A lovely two bedroom apartment that has been refurbished to an immaculate standard by the current owner. This property has a private patio, plenty of built-in storage and low outgoing charges.

The King's Road is home to a number of world famous shops, restaurants and noteworthy landmarks. Local bus routes as well as Sloane Square, Imperial Wharf and Fulham Broadway stations are all within walking distance.

Features

- Private Patio
- Two Bedrooms
- Excellent Condition
- Low Service Charge
- Leasehold
- One Bathroom

Kings Road, London, SW10



Lower Ground Floor

Total area (approx.): 58.7 sq. m (631.8 sq. ft)
External Storage (approx.): 1.8 sq. m (19.3 sq. ft)

Dexters

Chelsea and Belgravia
45 Sloane Avenue
London
SW3 3DH
Sales
020 7590 9510

Energy Rating: C. We aim to make our particulars both accurate and reliable. However they are not guaranteed; nor do they form part of an offer or contract. If you require clarification on any points then please contact us, especially if you're traveling some distance to view. Please note that appliances and heating systems have not been tested and therefore no warranties can be given as to their good working order.

 **RICS** | Regulated
Estate Agent
and Letting Agent

dexters.co.uk