



Flat 9 Olive Apts 643 Kingston Road, Raynes Park, London

London

In Excess of £375,000

Enhanced with AI by STREET





Flat 9 Olive Apartments 643 Kingston Road

Raynes Park, London

Newly developed two-bedroom flat with open-plan living, high-spec kitchen, modern bathroom, heat pump, and brand new lease. Close to amenities and transport. Ideal for professionals or investors.

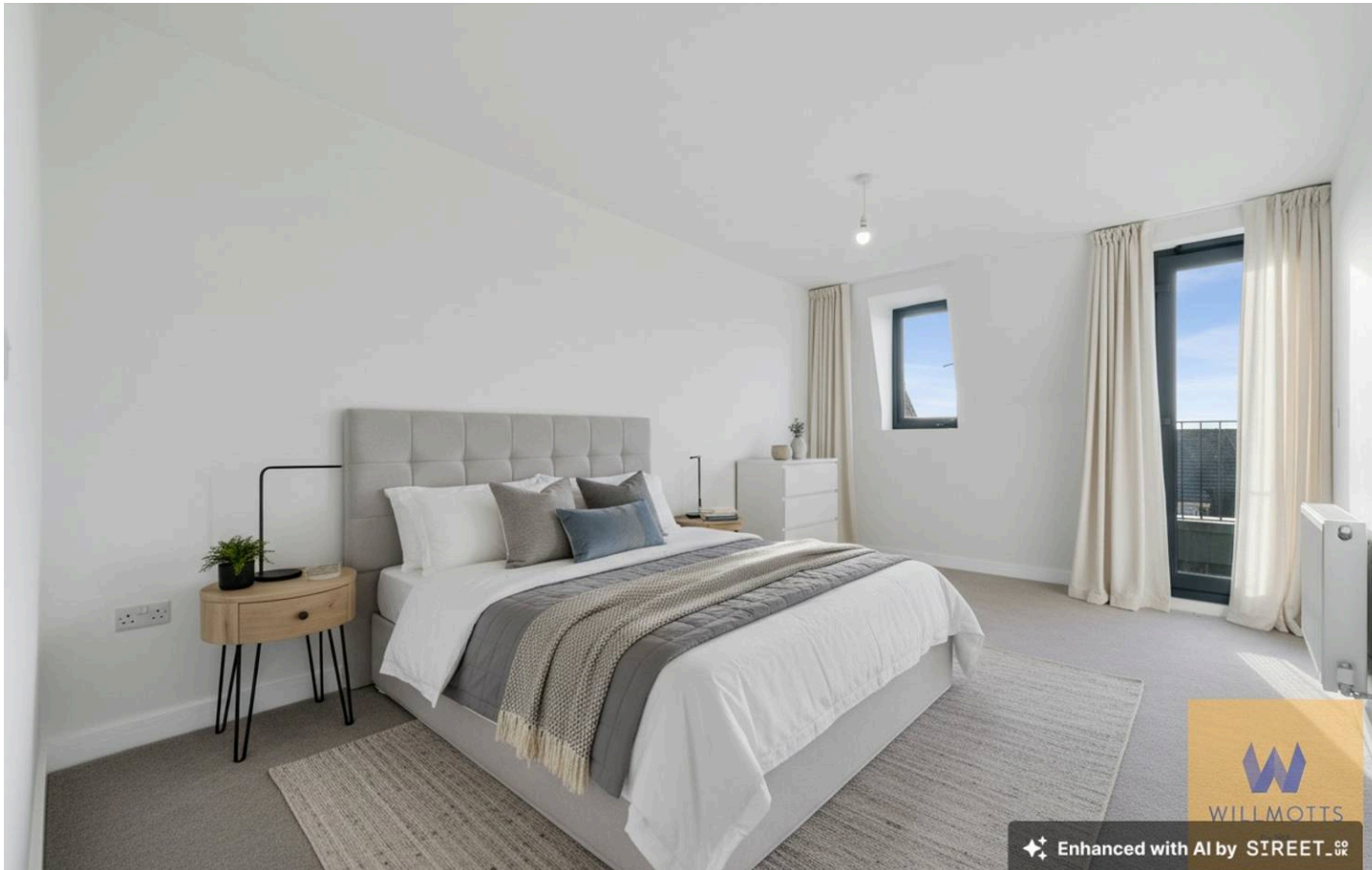
Council Tax band: TBD

Tenure: Leasehold

EPC Energy Efficiency Rating: B

EPC Environmental Impact Rating:

- Newly Developed
- Brand New Lease
- Heat Pump



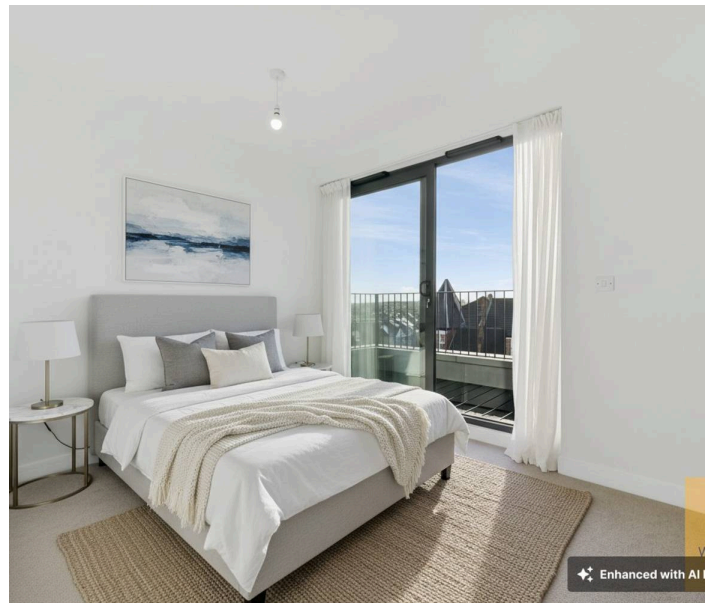
Open plan kitchen/lounge

Bedroom

Bedroom



Enhanced with AI by STREET.CO.UK



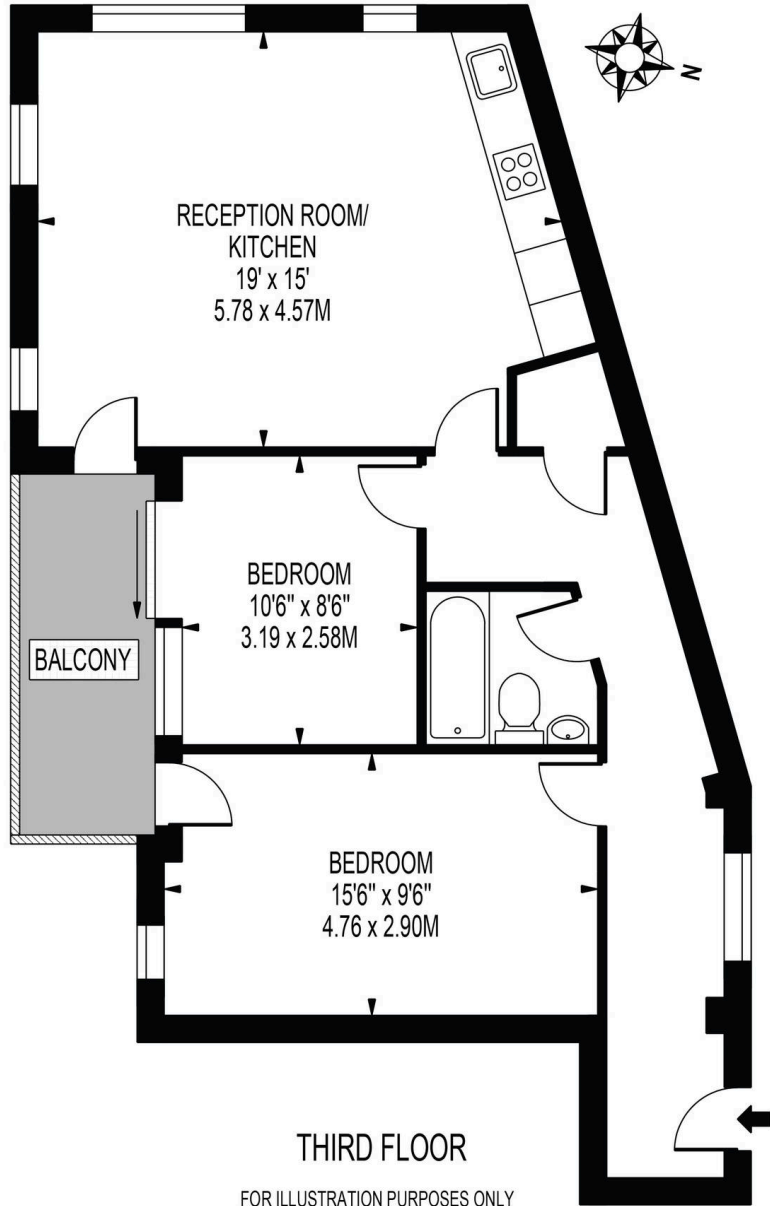
Enhanced with AI by

BALCONY



KINGSTON ROAD

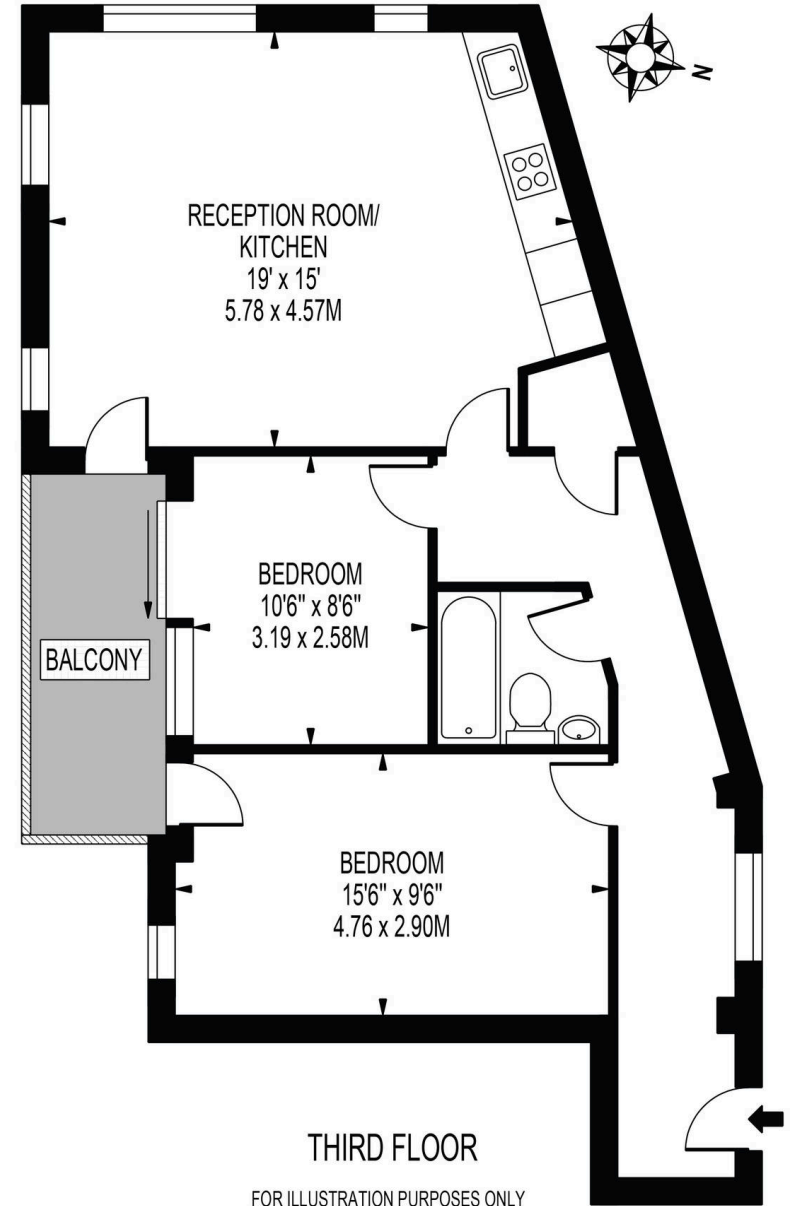
APPROXIMATE GROSS INTERNAL FLOOR AREA: 704 SQ FT - 65.36 SQ M



THIS FLOOR PLAN SHOULD BE USED AS A GENERAL OUTLINE FOR GUIDANCE ONLY AND DOES NOT CONSTITUTE IN WHOLE OR IN PART AN OFFER OR CONTRACT. ANY INTENDING PURCHASER OR LESSEE SHOULD SATISFY THEMSELVES BY INSPECTION, SEARCHES, ENQUIRIES AND FULL SURVEY AS TO THE CORRECTNESS OF EACH STATEMENT. ANY AREAS, MEASUREMENTS OR DISTANCES QUOTED ARE APPROXIMATE AND SHOULD NOT BE USED TO VALUE A PROPERTY OR BE THE BASIS OF ANY SALE OR LET.

KINGSTON ROAD

APPROXIMATE GROSS INTERNAL FLOOR AREA: 704 SQ FT - 65.36 SQ M



THIS FLOOR PLAN SHOULD BE USED AS A GENERAL OUTLINE FOR GUIDANCE ONLY AND DOES NOT CONSTITUTE IN WHOLE OR IN PART AN OFFER OR CONTRACT. ANY INTENDING PURCHASER OR LESSEE SHOULD SATISFY THEMSELVES BY INSPECTION, SEARCHES, ENQUIRIES AND FULL SURVEY AS TO THE CORRECTNESS OF EACH STATEMENT. ANY AREAS, MEASUREMENTS OR DISTANCES QUOTED ARE APPROXIMATE AND SHOULD NOT BE USED TO VALUE A PROPERTY OR BE THE BASIS OF ANY SALE OR LET.



Willmotts Real Estate Agents

Willmotts Property Services, Willmott House - W6 9EU

02082229958

info@willmotts.com

www.wreg.co.uk

These particulars are prepared for the convenience of prospective purchasers and do not form part of any offer or contract. All descriptions, dimensions, references to condition and other details are provided in good faith but are for guidance only and should not be relied upon as statements of fact. Measurements are approximate and subject to variations; purchasers are advised to verify dimensions and specifications. No warranty is given or implied regarding the accuracy of the information contained herein. Properties may be subject to prior sale, lease, or withdrawal without notice. The estate agent accepts no responsibility for any loss or damage arising from reliance on these particulars.



WILLMOTTS
Est. 1856