



ST GREGORYS ROAD

  
**EDWARDS**  
ESTABLISHED 2007

**1 ST. GREGORYS ROAD  
STRATFORD-UPON-AVON CV37 6UH**

FOR YOUR FREE  
LAWN ANALYSIS  
CONTACT US TODAY

# FOR STARTERS



PCM  
£550 PCM

## MAIN COURSE

A newly renovated furnished studio flat available for single person only.

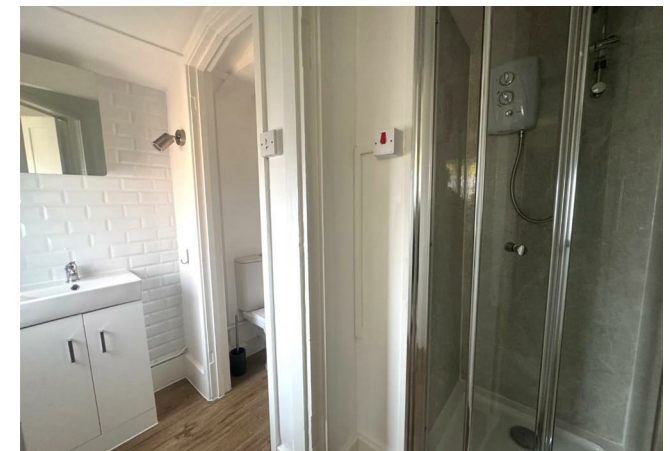
Situated in superb peaceful location and within easy walking distance of the main town centre shops and businesses.

This studio is a rear extension to the main building and as such benefits from having own front doorway.

Briefly consisting of the main room incorporating bedroom area with bed and wardrobe supplied, kitchenette with cooking facility, fridge, and fitted cupboards. Shower cubicle and w.c. room.

Available Now

Sorry no pets



# LOCATION

Please see Tenancy Information under the Lettings heading on the toolbar on our website.



## KEY INGREDIENTS



Tenure



Council Tax  
Band - A



EPC  
Band - E



TBC



Heating system  
TBC



TBC

WHY NOT TAKE  
A LOOK INSIDE?  
GIVE US A CALL  
01789 414222

**FOR MORE INFO AND  
TO SEE OUR OTHER  
LOVELY PROPERTIES  
CHECK OUT OUR WEBSITE**

**[MOVEWITHEDWARDS.CO.UK](http://MOVEWITHEDWARDS.CO.UK)**

**HAVE YOU GOT  
A PROPERTY  
TO SELL?  
WE'D LOVE TO  
HAVE A CHAT  
01789 414222**

**DID YOU KNOW WE ALSO  
DO MORTGAGES.  
FOR FREE ADVICE  
SPEAK TO  
ONE OF OUR  
CONSULTANTS**

