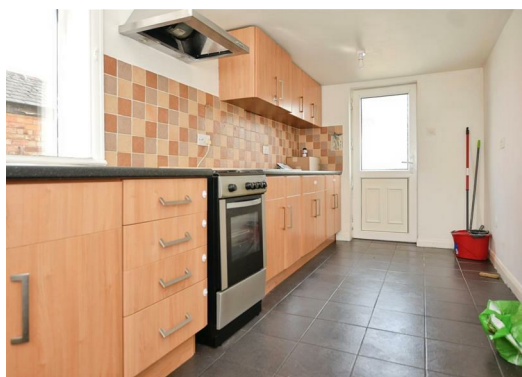





**22 Webster Avenue, Scunthorpe
DN15 7DU
£850 Per Month**

Now Available to Let is this well proportioned three bedroom semi detached property located on Webster Avenue, Scunthorpe. Close to many local amenities including Scunthorpe General Hospital, schools and shops, this home is in a great location and briefly comprises the entrance hallway, living room, lounge/ dining room and kitchen to the ground floor, with the landing upstairs serving the three bedrooms and family bathroom. Externally, there is off road parking to the front of the property with a well presented rear garden with detached brick built garage.



Disclaimer

The information displayed about this property comprises a property advertisement and is an illustration meant for use as a guide only. Bella Properties makes no warranty as to the accuracy or completeness of the information.

Energy Efficiency Rating		
	Current	Potential
<i>Very energy efficient - lower running costs</i>		
(92 plus) A		
(81-91) B		
(69-80) C		
(55-68) D		
(39-54) E		
(21-38) F		
(1-20) G		
<i>Not energy efficient - higher running costs</i>		
England & Wales	EU Directive 2002/91/EC	

Environmental Impact (CO ₂) Rating		
	Current	Potential
<i>Very environmentally friendly - lower CO2 emissions</i>		
(92 plus) A		
(81-91) B		
(69-80) C		
(55-68) D		
(39-54) E		
(21-38) F		
(1-20) G		
<i>Not environmentally friendly - higher CO2 emissions</i>		
England & Wales	EU Directive 2002/91/EC	