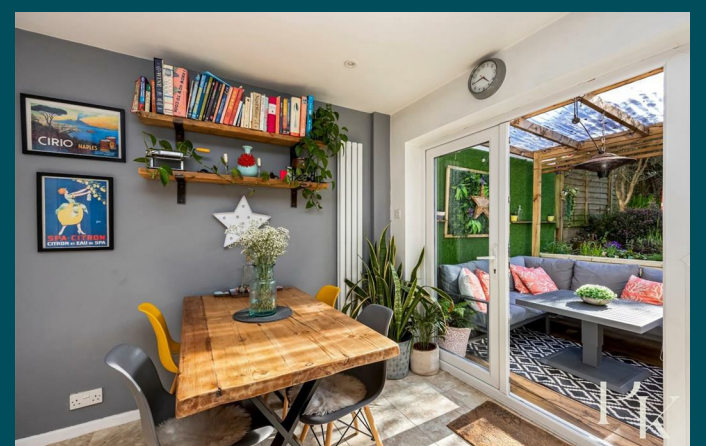




20 Dean Close
Portslade, BN41 2FS



20 Dean Close

Portslade, BN41 2FS

Guide price £325,000

GUIDE PRICE £325,000 - £350,000

A beautifully presented two-bedroom end of terrace family home, ideally positioned in a highly sought-after location. Boasting impressive far-reaching views, this property is perfectly suited to both families and commuters.

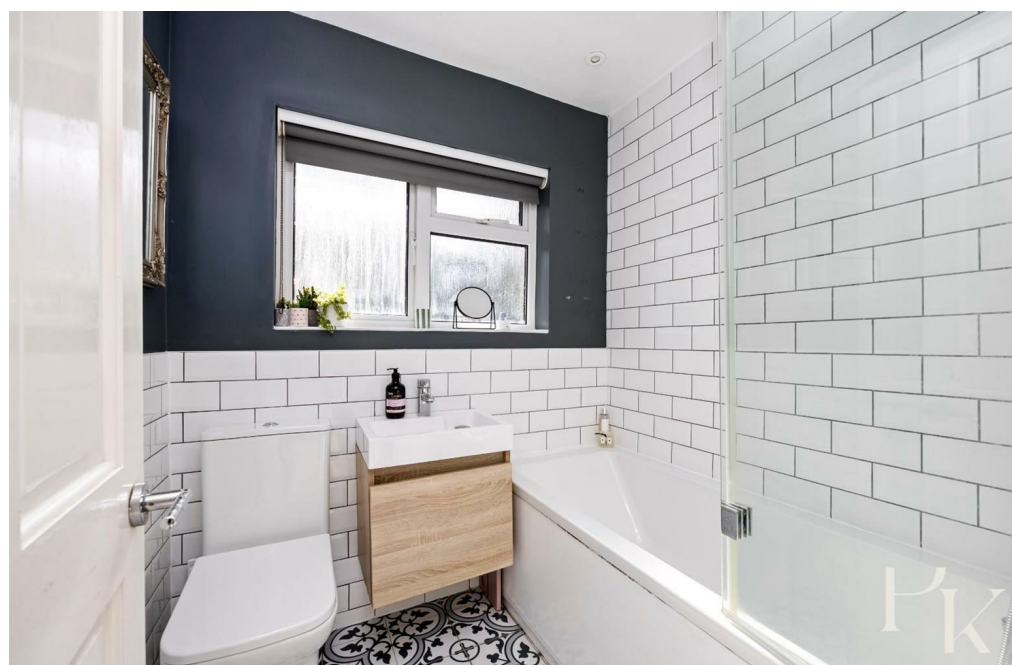
Upon entering, you are welcomed into a spacious living room, offering a warm and inviting atmosphere with elegant wooden flooring and a tasteful, contemporary colour scheme, ideal for both relaxing and entertaining. This leads seamlessly into a stylish, well-appointed kitchen, thoughtfully designed with modern appliances and ample space for dining. Double doors open from the kitchen onto a stunning, tiered rear garden, featuring a beautifully crafted decked area, perfect for al fresco dining and outdoor gatherings.

Upstairs, the property offers two generously sized double bedrooms, along with a sleek and modern family bathroom fitted with high-quality fixtures and finishes.

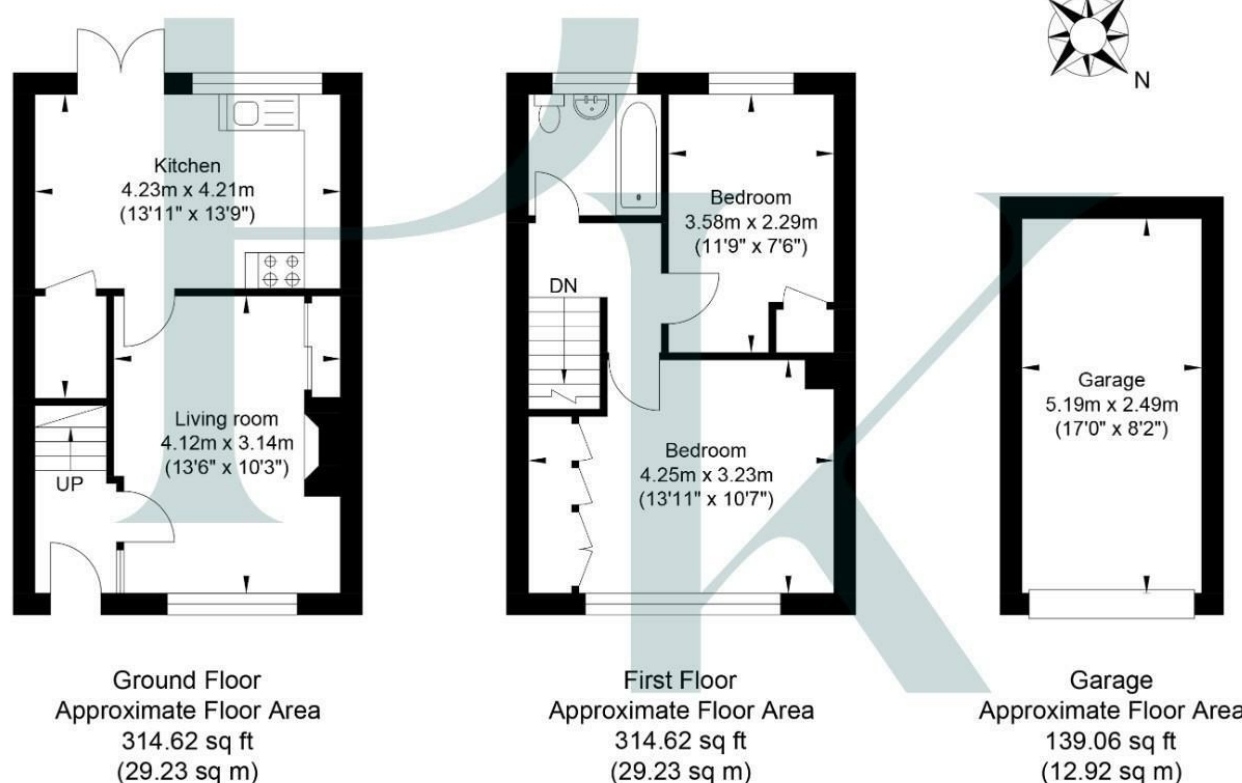
The property is also sold with the added benefit of planning permission for a two-storey extension.

Externally, the rear garden is arranged over three attractive tiers, with the upper deck providing breathtaking, far-reaching views across, an ideal spot to unwind and take in the scenery. A private garage offers excellent parking or storage options.

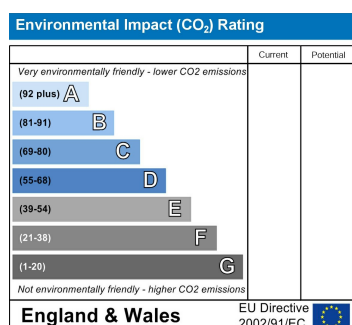
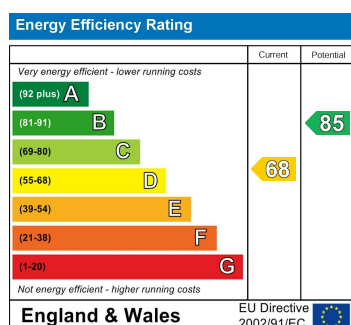
Located in a prime and popular residential area, the property is within easy reach of highly regarded schools, local shops, parks, and convenient bus routes. Portslade station and the A27 are also close by, offering excellent transport links for commuters.



Dean Close



Approximate Gross Internal Area (Excluding Garage) = 58.46 sq m / 629.24 sq ft
 Illustration for identification purposes only, measurements are approximate, not to scale.



Pearson Keehan