

Emma Terry Homes

moving made personal



18 Riverdale Park

Gunthorpe, Nottingham, NG14 7RP

Asking price £59,950



18 Riverdale Park, Gunthorpe, Nottingham NG14 7RP

Asking price £59,950

Nestled in the serene surroundings of Gunthorpe, Nottingham, this park home offers a delightful retreat for those aged over 45. The home features a reception room, kitchen/diner, bedroom with built-in storage and a bathroom.

This park home is perfect for individuals or couples seeking a tranquil lifestyle in a picturesque setting. Riverdale Park boasts beautiful landscapes and a friendly community atmosphere, making it an ideal choice for those looking to enjoy a quieter pace of life.

With its convenient location in Gunthorpe, residents can easily access local amenities, including shops, cafes, and recreational facilities. The surrounding area offers a variety of outdoor activities, allowing you to fully embrace the natural beauty of Nottinghamshire.

This property presents a unique opportunity to own a piece of peaceful living in a vibrant community. Whether you are looking to downsize or simply seeking a new beginning, this park home in Riverdale Park is sure to meet your needs.

Ground Rent charge (including water rates) £202 per month.

LOUNGE

12'3" x 11'6" (3.74 x 3.52)

UPVC double glazed bay window to front, UPVC double glazed window to side, radiator, electric fire and door to side.

KITCHEN/DINER

11'6" x 10'9" (3.53 x 3.28)

UPVC double glazed windows to either side, a variety of wall and base units, sink with mixer tap and drainer, built-in oven and hob and space for washing machine.

HALL

4'11" x 3'5" (1.52 x 1.05)

Doors through to bedroom, bathroom, kitchen and side.

BEDROOM

11'6" x 9'3" (3.52 x 2.84)

Fitted storage cupboards, radiator and UPVC double glazed window to side.

BATHROOM

6'2" x 5'4" (1.89 x 1.65)

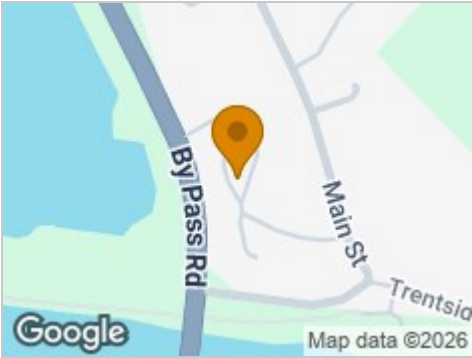
Shower cubicle with electric shower, low level flush WC, wash hand basin and UPVC double glazed obscure window to side.

GARDEN STORE

7'4" x 5'6" (2.24 x 1.68)



Road Map



Hybrid Map

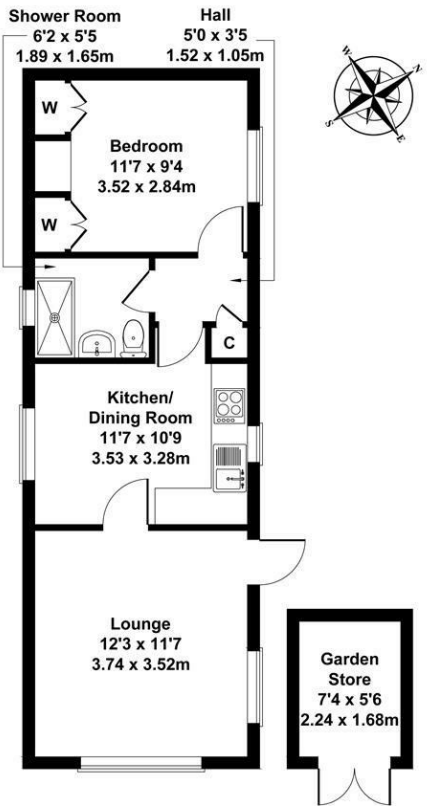


Terrain Map



18 Riverdale Park, Gunthorpe, NG14 7RP

Approximate Gross Internal Area
463 sq ft - 43 sq m

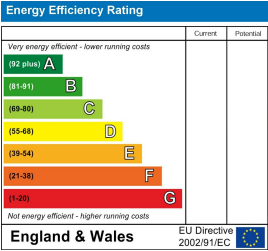


Not to Scale. Produced by The Plan Portal 2025
For Illustrative Purposes Only.

Viewing

Please contact our Emma Terry Homes Office
on 0115 966 57 41 if you wish to arrange a viewing appointment for this
property or require further information.

Energy Efficiency Graph



These particulars, whilst believed to be accurate are set out as a general outline only for guidance and do not constitute any part of an offer or contract. Intending purchasers should not rely on them as statements of representation of fact, but must satisfy themselves by inspection or otherwise as to their accuracy. No person in this firm's employment has the authority to make or give any representation or warranty in respect of the property.